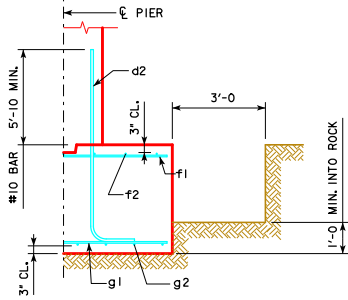
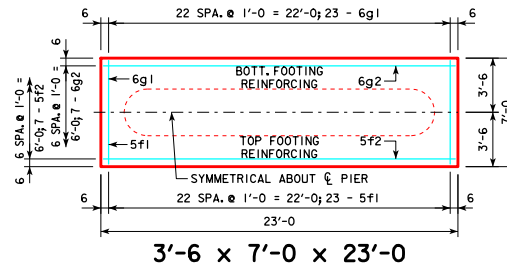


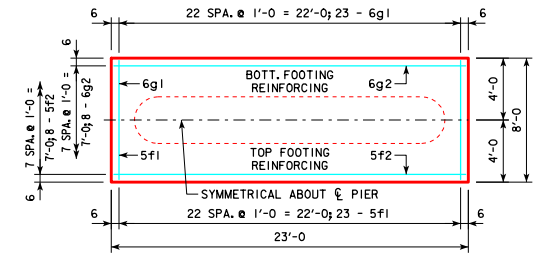
REVISED 04-12 - EXCAVATION LIMIT WAS CHANGED TO 3'-0".
REVISED 09-2016 - CHANGED VERTICAL CLEARANCE OF REBAR TO TOP OF PIER FOOTING TO 3" WAS 2".



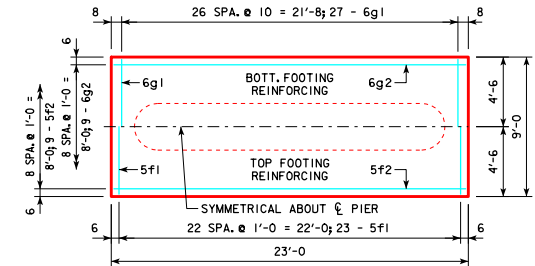
TYPICAL SECTION



3'-6 x 7'-0 x 23'-0

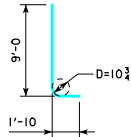


3'-6 x 8'-0 x 23'-0



3'-6 x 9'-0 x 23'-0

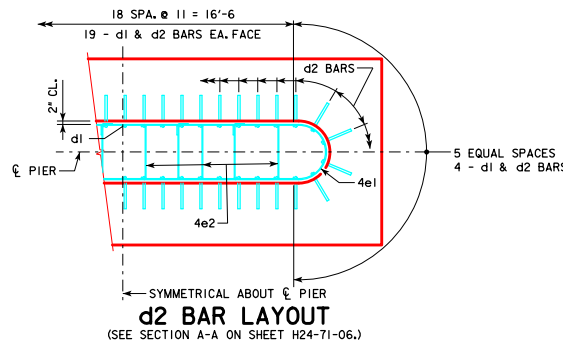
H IN	CL - ABUT. BRG.	FOOTING SIZE
16 TO 18	138'-10 151'-4 163'-10 176'-4 188'-10	3'-6 x 7' x 23'
19 TO 21	201'-4 213'-10 226'-4 243'-0	3'-6 x 8' x 23'
22 TO 24	243'-0 138'-10 151'-4 163'-10 176'-4 188'-10 201'-4 213'-10 226'-4 243'-0	3'-6 x 9' x 23'



d2

NOTE: D = PIN DIAMETER.
DIMENSIONS ARE OUT TO OUT.

FOOTING SIZE	REINFORCING STEEL (ONE FOOTING)			TOTAL WEIGHT (LB.)	STRUCTURAL CONCRETE (CY)	
	BAR	NO., SIZE & SPACING	LENGTH			
3'-6 x 7' x 23'	d2	46 - #10 AS SHOWN	10'-10	2144	2937	20.9
	f1	23 - #5 @ 1'-0	6'-8	160		
	f2	7 - #5 @ 1'-0	22'-8	165		
	g1	23 - #6 @ 1'-0	6'-8	230		
	g2	7 - #6 @ 1'-0	22'-8	238		
3'-6 x 8' x 23'	d2	46 - #10 AS SHOWN	10'-10	2144	3054	23.9
	f1	23 - #5 @ 1'-0	7'-8	184		
	f2	8 - #5 @ 1'-0	22'-8	189		
	g1	23 - #6 @ 1'-0	7'-8	265		
	g2	8 - #6 @ 1'-0	22'-8	272		
3'-6 x 9' x 23'	d2	46 - #10 AS SHOWN	10'-10	2144	3222	26.8
	f1	23 - #5 @ 1'-0	8'-8	208		
	f2	9 - #5 @ 1'-0	22'-8	213		
	g1	27 - #6 @ 0'-10	8'-8	351		
	g2	9 - #6 @ 1'-0	22'-8	306		



d2 BAR LAYOUT
(SEE SECTION A-A ON SHEET H24-71-06.)

FOOTING NOTES:

THESE SPREAD FOOTINGS ARE DESIGNED AND DETAILED TO BE USED WITH THE CAP AND COLUMN DETAILS OF THE TEE PIERS AS SHOWN ON SHEET H24-71-06.

THESE SPREAD FOOTINGS SHALL EXTEND AT LEAST 12 INCHES INTO SUITABLE FOUNDATION ROCK AND THE LAST 12 INCHES OF ROCK EXCAVATION SHALL BE TO NEAT LINES OF MASONRY. THE FOUNDATION ROCK SHALL HAVE A MINIMUM LRFD NOMINAL BEARING RESISTANCE OF 30 KIPS PER SQUARE FOOT (ALLOWABLE BEARING VALUE OF AT LEAST 10 KIPS PER SQUARE FOOT).

09-2016 LATEST REVISION DATE <i>Thomas E. M. Donnell</i> APPROVED BY BRIDGE ENGINEER		
	STANDARD DESIGN - 24' ROADWAY, THREE SPAN BRIDGE PRETENSIONED PRESTRESSED CONCRETE BEAM BRIDGES DECEMBER, 2006	
	TEE PIER - SPREAD FOOTINGS 45° SKEW - H=16' TO 24'	H24-76-06