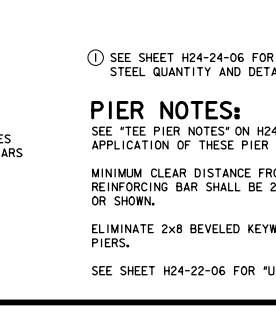
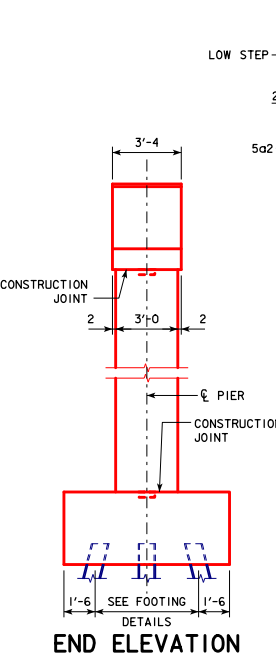
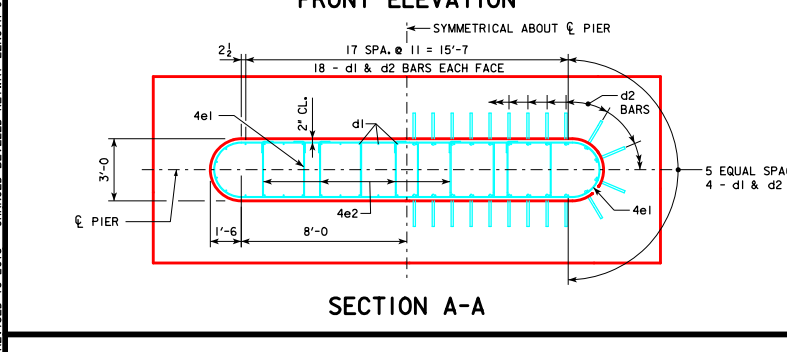
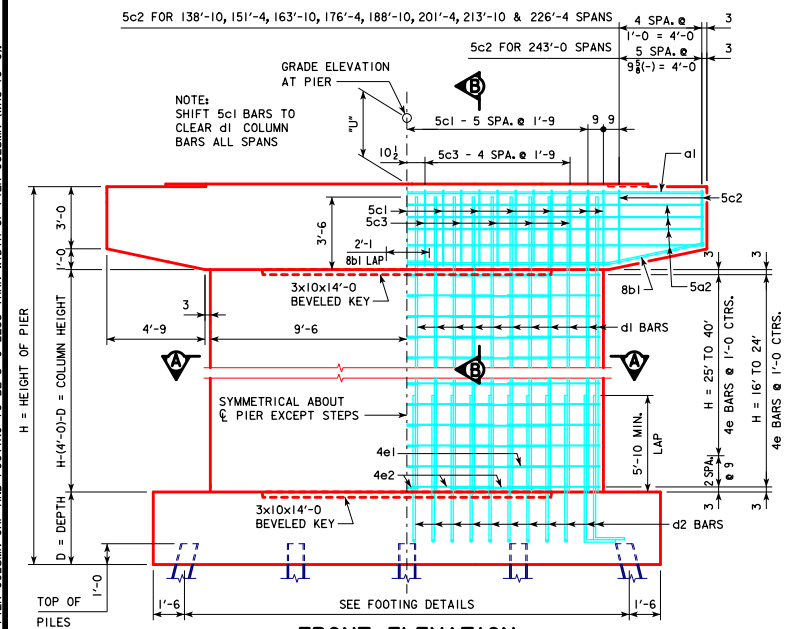
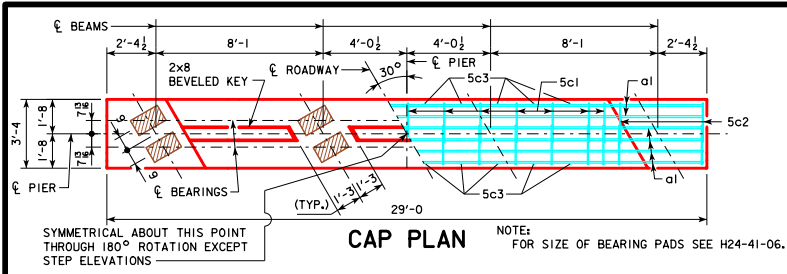


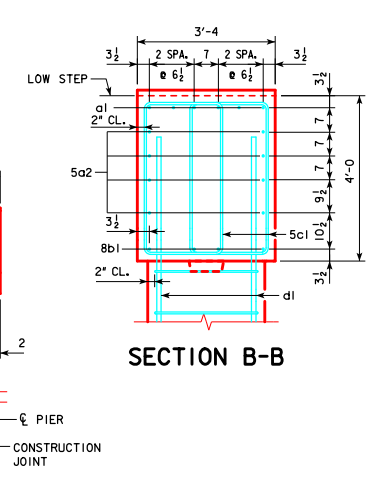
REVISED 01-10-10 - SHEET WAS REVISED TO MEET LRFD SPECIFICATIONS.  
 REVISED 05-2016 - CHANGED TOP OF FOOTING TO TOP OF REBAR VERTICAL CLEARANCE TO 3" (WAS 2").  
 REVISED 10-2018 - CHANGED BEVELED KEYWAY LENGTH OF PIER COLUMN CAP AND FOOTING TO BE 5'-0" LESS THAN WIDTH OF PIER COLUMN (WAS 16'-0").



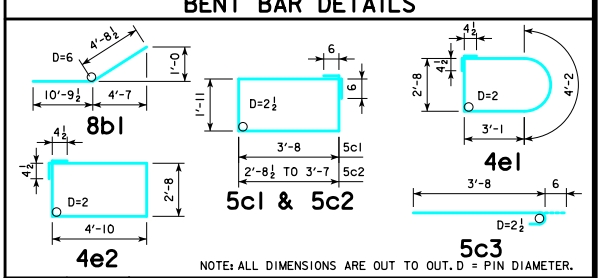
① SEE SHEET H24-24-06 FOR STEP REINFORCING STEEL QUANTITY AND DETAILS.

**PIER NOTES:**  
 SEE "TEE PIER NOTES" ON H24-02-06 FOR NOTES REGARDING APPLICATION OF THESE PIER STANDARDS.  
 MINIMUM CLEAR DISTANCE FROM FACE OF CONCRETE TO NEAR REINFORCING BAR SHALL BE 2 INCHES UNLESS OTHERWISE NOTED OR SHOWN.  
 ELIMINATE 2x8 BEVELED KEYWAY ON TOP OF CAP FOR EXPANSION PIERS.  
 SEE SHEET H24-22-06 FOR "U" DIMENSION.

		CAP																					
		138'-10"		151'-4"		163'-10"		176'-4"		188'-10"		201'-4"		213'-10"		226'-4"		243'-0"					
REINFORCING STEEL	BAR LENGTH	NO.	SIZE	WEIGHT	NO.	SIZE	WEIGHT	NO.	SIZE	WEIGHT	NO.	SIZE	WEIGHT	NO.	SIZE	WEIGHT	NO.	SIZE	WEIGHT				
a1	28'-8"	6	9	585	6	9	585	6	9	585	6	9	585	6	9	585	6	9	585	6	10	740	
5a2	28'-8"	8	5	239	8	5	239	8	5	239	8	5	239	8	5	239	8	5	239	8	5	239	
8b1	15'-6"	8	8	331	8	8	331	8	8	331	8	8	331	8	8	331	8	8	331	8	8	331	
5c1	12'-2"	26	5	330	26	5	330	26	5	330	26	5	330	26	5	330	26	5	330	26	5	330	
5c2	VARIABLES	20	5	232	20	5	232	20	5	232	20	5	232	20	5	232	20	5	232	20	5	278	
5c3	4'-2"	20	5	87	20	5	87	20	5	87	20	5	87	20	5	87	20	5	87	20	5	87	
TOTAL (LB.)				1804		1804		1804		1804		1804		1804		1804		1804				2005	
STRUCTURAL CONCRETE (CY)				14.2		14.2		14.2		14.2		14.2		14.2		14.2		14.2				14.2	



		COLUMN																				
		138'-10"		151'-4"		163'-10"		176'-4"		188'-10"		201'-4"		213'-10"		226'-4"		243'-0"				
H IN FEET	COLUMN HEIGHT	NO.	SIZE	LENGTH	WEIGHT	NO.	SIZE	LENGTH	WEIGHT	NO.	SIZE	LENGTH	WEIGHT	NO.	SIZE	LENGTH	WEIGHT	NO.	SIZE	LENGTH	WEIGHT	
16	8'-6"	17.3	44	10	12'-0"	2272	18	4	13'-9"	165	36	4	15'-9"	379	2816							
17	9'-6"	19.4	44	10	13'-0"	2461	20	4	13'-9"	184	40	4	15'-9"	421	3066							
18	10'-6"	21.4	44	10	14'-0"	2651	22	4	13'-9"	202	44	4	15'-9"	463	3316							
19	11'-6"	23.5	44	10	15'-0"	2840	24	4	13'-9"	220	48	4	15'-9"	505	3565							
20	12'-6"	25.5	44	10	16'-0"	3029	26	4	13'-9"	239	52	4	15'-9"	547	3815							
21	13'-6"	27.5	44	10	17'-0"	3219	28	4	13'-9"	257	56	4	15'-9"	589	4065							
22	14'-6"	29.6	44	10	18'-0"	3408	30	4	13'-9"	276	60	4	15'-9"	631	4315							
23	15'-6"	31.6	44	10	19'-0"	3597	32	4	13'-9"	294	64	4	15'-9"	673	4564							
24	16'-6"	33.7	44	10	20'-0"	3787	34	4	13'-9"	312	68	4	15'-9"	715	4814							
25	17'-0"	34.7	44	10	22'-6"	4260	40	4	13'-9"	367	80	4	15'-9"	758	4970							
26	18'-0"	36.7	44	10	21'-6"	4071	38	4	13'-9"	349	76	4	15'-9"	800	5220							
27	19'-0"	38.8	44	10	22'-6"	4260	40	4	13'-9"	367	80	4	15'-9"	842	5469							
28	20'-0"	40.8	44	10	23'-6"	4449	42	4	13'-9"	386	84	4	15'-9"	884	5719							
29	21'-0"	42.8	44	10	24'-6"	4639	44	4	13'-9"	404	88	4	15'-9"	926	5969							
30	22'-0"	44.9	44	10	25'-6"	4828	46	4	13'-9"	423	92	4	15'-9"	968	6219							
31	23'-0"	46.9	44	10	26'-6"	5017	48	4	13'-9"	441	96	4	15'-9"	1010	6468							
32	24'-0"	48.9	44	10	27'-6"	5207	50	4	13'-9"	459	100	4	15'-9"	1052	6718							
33	25'-0"	51.0	44	10	28'-6"	5396	52	4	13'-9"	478	104	4	15'-9"	1094	6968							
34	26'-0"	53.0	44	10	29'-6"	5585	54	4	13'-9"	496	108	4	15'-9"	1136	7217							
35	27'-0"	55.1	44	10	30'-6"	5775	56	4	13'-9"	514	112	4	15'-9"	1178	7467							
36	28'-0"	57.1	44	10	31'-6"	5964	58	4	13'-9"	533	116	4	15'-9"	1220	7717							
37	29'-0"	59.1	44	10	32'-6"	6153	60	4	13'-9"	551	120	4	15'-9"	1263	7967							
38	30'-0"	61.2	44	10	33'-6"	6343	62	4	13'-9"	569	124	4	15'-9"	1305	8217							
39	31'-0"	63.2	44	10	34'-6"	6532	64	4	13'-9"	588	128	4	15'-9"	1347	8467							
40	32'-0"	65.3	44	10	35'-6"	6721	66	4	13'-9"	606	132	4	15'-9"	1389	8716							



10-2016 LATEST REVISION DATE

APPROVED BY BRIDGE ENGINEER

**Iowa Department of Transportation**  
 Highway Division

STANDARD DESIGN - 24' ROADWAY, THREE SPAN BRIDGE

**PRETENSIONED PRESTRESSED CONCRETE BEAM BRIDGES**  
 DECEMBER, 2006

**TEE PIER CAP AND COLUMN**  
 30° SKEW

**H24-64-06**