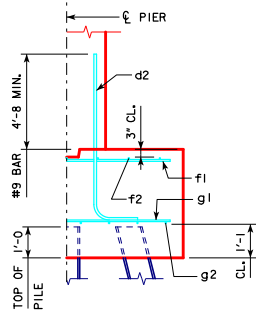
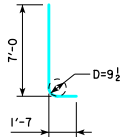


REVISED 05-13 - REVISION FOR LRFD PILE DESIGN.
REVISED 09-2016 - CHANGED VERTICAL CLEARANCE OF REBAR - f2* TO TOP OF PIER FOOTING TO 3" (WAS 2").



TYPICAL SECTION

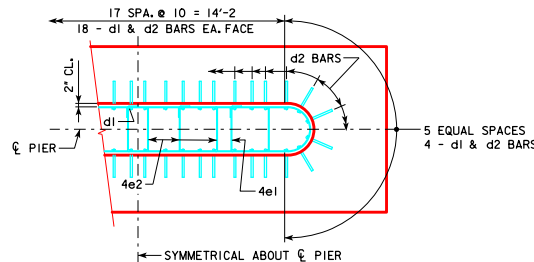


d2

NOTE: D = PIN DIAMETER.
DIMENSIONS ARE OUT TO OUT.

H IN FT.	P ABUT. BRG.	PILING (HP10x57)		FOOTING SIZE
		NO. & LAYOUT	① LRFD P _u STRENGTH I ₁ DES. LOAD (KIPS)	
18	201'-4	12A	142	3'-6 x 8' x 21'
		13A	140	
		13A	146	
		14A	143	
21	201'-4	13A	139	3'-6 x 8' x 21'
		13A	144	
		14A	141	
		14A	146	
24	201'-4	13B	140	3'-6 x 9' x 22'
		13B	145	
		14B	141	
		14B	147	

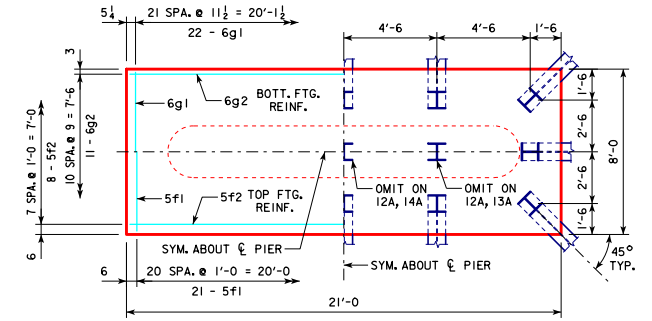
FOOTING SIZE	REINFORCING STEEL (ONE FOOTING)				TOTAL WEIGHT (L.B.)	STRUCTURAL CONCRETE (CY)
	BAR	NO., SIZE & SPACING	LENGTH	WEIGHT (L.B.)		
3'-6 x 8' x 21'	d2	44 - #9 AS SHOWN	8'-7	1284	2218	21.8
	f1	21 - #5 @ 1'-0	7'-8	168		
	f2	8 - #5 @ 1'-0	20'-8	172		
	g1	22 - #6 @ 0'-11 1/2	7'-8	253		
	g2	11 - #6 @ 0'-9	20'-8	341		
3'-6 x 9' x 22'	d2	44 - #9 AS SHOWN	8'-7	1284	2624	25.7
	f1	22 - #5 @ 1'-0	8'-8	199		
	f2	9 - #5 @ 1'-0	21'-8	203		
	g1	23 - #7 @ 0'-11 1/2	8'-8	407		
	g2	12 - #7 @ 0'-9	21'-8	531		



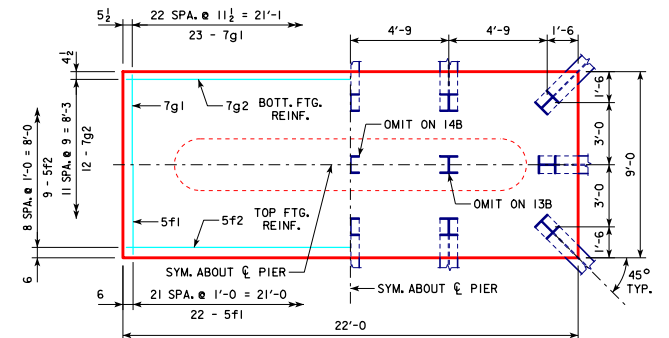
d2 BAR LAYOUT

(SEE SECTION A-A ON SHEET H24-57-06.)

① NOTE: P_u STRENGTH I DESIGN LOAD (KIPS) IS NOT THE VALUE USED IN THE FIELD FOR DRIVING PILES.



3'-6 x 8'-0 x 21'-0 FOR 12A, 13A & 14A



3'-6 x 9'-0 x 22'-0 FOR 13B & 14B

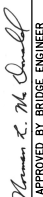

FOOTING NOTES:

THESE FOOTINGS ARE DESIGNED AND DETAILED TO BE USED WITH THE CAP AND COLUMN DETAILS OF THE TEE PIERS AS SHOWN ON SHEET H24-57-06.

BATTER PILES IN EXTERIOR ROWS I4 IN THE DIRECTION SHOWN.

STEEL PILING USED AS POINT BEARING SHALL HAVE A MINIMUM DISTANCE OF APPROXIMATELY 10 FEET FROM BOTTOM OF FOOTING TO TOP OF BEARING ROCK. THE PILE LAYOUTS ARE SUCH THAT THE DISTANCE CENTER TO CENTER OF ADJACENT PILING SHALL NOT EXCEED 8'-0.

PIER PILES SHALL BE DRIVEN TO VALUES SHOWN IN DESIGN PLANS.

09-2016 LATEST REVISION DATE	 APPROVED BY BRIDGE ENGINEER	 Iowa Department of Transportation Highway Division	STANDARD DESIGN - 24' ROADWAY, THREE SPAN BRIDGE
			PRETENSIONED PRESTRESSED CONCRETE BEAM BRIDGES DECEMBER, 2006
TEE PIER-HP10x57 SRL-1 STEEL PILE FOOTINGS 15° SKEW - H=16' TO 24'		H24-58-06	