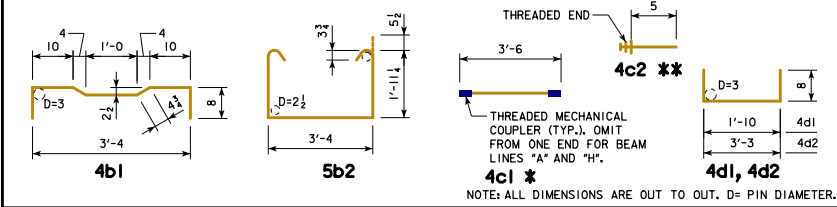


**EPOXY COATED REINFORCING BAR LIST**  
**27" x 48" x 40'-0 RCBB, 0° SKEW**

BEAM LINE		BEAM LINE "A"			BEAM LINES "B", "D" AND "F"			BEAM LINES "C", "E" AND "G"			BEAM LINE "H"		
BAR	SHAPE	NO.	LENGTH	WEIGHT	NO.	LENGTH	WEIGHT	NO.	LENGTH	WEIGHT	NO.	LENGTH	WEIGHT
4a1		6	40'-10	164	6	40'-10	164	6	40'-10	164	6	40'-10	164
4a2		1	39'-8	26	1	39'-8	26	1	39'-8	26	1	39'-8	26
10a3		6	40'-10	1054	6	40'-10	1054	6	40'-10	1054	6	40'-10	1054
10a4		1	39'-8	171	1	39'-8	171	1	39'-8	171	1	39'-8	171
4b1		60	4'-9 1/2	192	61	4'-9 1/2	195	60	4'-9 1/2	192	61	4'-9 1/2	195
5b2		49	8'-1 1/2	415	49	8'-1 1/2	415	49	8'-1 1/2	415	49	8'-1 1/2	415
4c1 *		61	3'-6	143	62	3'-6	145	61	3'-6	143	62	3'-6	145
4c2 **		61	0'-5	17	124	0'-5	35	122	0'-5	34	62	0'-5	17
4c3		2	3'-2	4	-	-	-	2	3'-2	4	-	-	-
4d1		8	3'-2	17	8	3'-2	17	8	3'-2	17	8	3'-2	17
4d2		6	4'-7	18	6	4'-7	18	6	4'-7	18	6	4'-7	18
TOTAL (LBS.)		2221			2240			2238			2222		

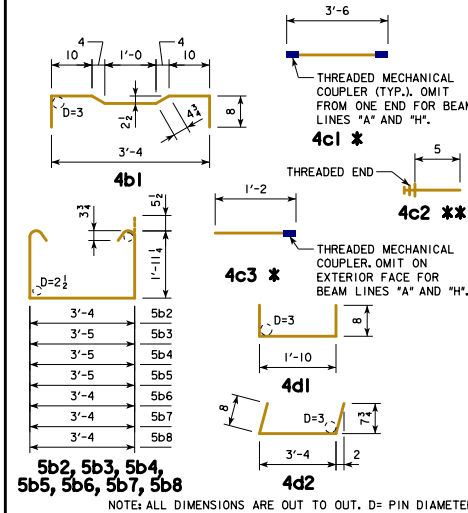
**BENT BAR DETAILS**



**EPOXY COATED REINFORCING BAR LIST**  
**27" x 48" x 40'-0 RCBB, 15° SKEW**

BEAM LINE		BEAM LINES "A" AND "H"			BEAM LINES "B" THRU "G"		
BAR	SHAPE	NO.	LENGTH	WEIGHT	NO.	LENGTH	WEIGHT
4a1		6	40'-10	164	6	40'-10	164
4a2		1	39'-8	26	1	39'-8	26
10a3		6	40'-10	1054	6	40'-10	1054
10a4		1	39'-8	171	1	39'-8	171
4b1		59	4'-9 1/2	189	59	4'-9 1/2	189
5b2		37	8'-1 1/2	314	37	8'-1 1/2	314
5b3		2	8'-2 1/2	17	2	8'-2 1/2	17
5b4		2	8'-2 1/2	17	2	8'-2 1/2	17
5b5		2	8'-2 1/2	17	2	8'-2 1/2	17
5b6		2	8'-1 1/2	17	2	8'-1 1/2	17
5b7		2	8'-1 1/2	17	2	8'-1 1/2	17
5b8		4	8'-1 1/2	34	4	8'-1 1/2	34
4c1 *		60	3'-6	140	60	3'-6	140
4c2 **		61	0'-5	17	122	0'-5	34
4c3 *		2	1'-2	2	2	1'-2	2
4c4		4	3'-4	9	4	3'-4	9
4d1		8	3'-2	17	8	3'-2	17
4d2		6	4'-8	19	6	4'-8	19
TOTAL (LBS.)		2241			2258		

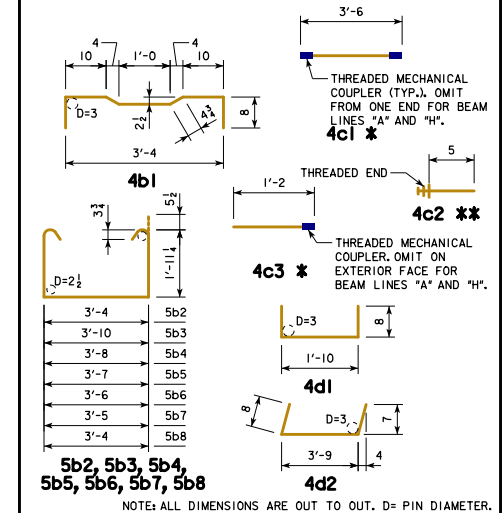
**BENT BAR DETAILS**



**EPOXY COATED REINFORCING BAR LIST**  
**27" x 48" x 40'-0 RCBB, 30° SKEW**

BEAM LINE		BEAM LINES "A" AND "H"			BEAM LINES "B" THRU "G"		
BAR	SHAPE	NO.	LENGTH	WEIGHT	NO.	LENGTH	WEIGHT
4a1		6	40'-10	164	6	40'-10	164
4a2		1	39'-8	26	1	39'-8	26
10a3		6	40'-10	1054	6	40'-10	1054
10a4		1	39'-8	171	1	39'-8	171
4b1		56	4'-9 1/2	179	56	4'-9 1/2	179
5b2		37	8'-1 1/2	314	37	8'-1 1/2	314
5b3		2	8'-7 1/2	18	2	8'-7 1/2	18
5b4		2	8'-5 1/2	18	2	8'-5 1/2	18
5b5		2	8'-4 1/2	17	2	8'-4 1/2	17
5b6		2	8'-3 1/2	17	2	8'-3 1/2	17
5b7		2	8'-2 1/2	17	2	8'-2 1/2	17
5b8		4	8'-1 1/2	34	4	8'-1 1/2	34
4c1 *		57	3'-6	133	57	3'-6	133
4c2 **		60	0'-5	17	120	0'-5	33
4c3 *		6	1'-2	5	6	1'-2	5
4c4		4	3'-8	10	4	3'-8	10
4d1		8	3'-2	17	8	3'-2	17
4d2		6	5'-1	20	6	5'-1	20
TOTAL (LBS.)		2231			2247		

**BENT BAR DETAILS**



NOTES:  
 \* INCLUDES MECHANICAL COUPLER(S). SEE BENT BAR DETAILS.  
 \*\* SEE BENT BAR DETAILS. THE LENGTHS SHOWN DO NOT INCLUDE AN ALLOWANCE FOR THE THREADED END. BAR LENGTHS MAY NEED TO INCREASE DEPENDING ON THE MECHANICAL COUPLER ASSEMBLY USED. THE COST OF THE THREADED PORTION OF THESE BARS IS TO BE INCLUDED IN THE PRICE BID FOR THE BEAMS. THE WEIGHT OF THE THREADED END IS NOT INCLUDED IN THE QUANTITY SHOWN.

LATEST REVISION DATE	Approved by Highway Engineer APPROVED BY BRIDGE ENGINEER	
		STANDARD DESIGN - 30'-0 ROADWAY, SINGLE SPAN <b>CONCRETE BOX BEAM BRIDGES</b>
		DECEMBER, 2016
		27" x 48" x 40'-0 RCBB DETAILS <b>REINFORCING BAR LIST</b>