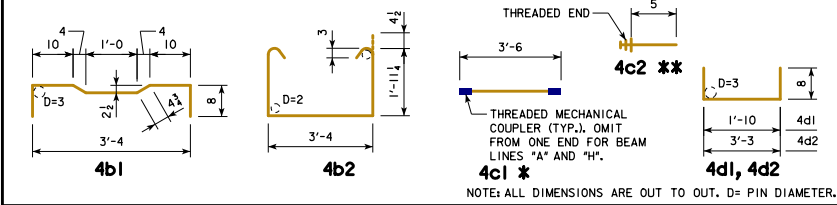


EPOXY COATED REINFORCING BAR LIST
27" x 48" x 60'-0" PPCBB, 0° SKEW

BEAM LINE		BEAM LINE "A"			BEAM LINES "B", "D" AND "F"			BEAM LINES "C", "E" AND "G"			BEAM LINE "H"		
BAR	SHAPE	NO.	LENGTH	WEIGHT	NO.	LENGTH	WEIGHT	NO.	LENGTH	WEIGHT	NO.	LENGTH	WEIGHT
4a1		8	31'-3"	167	8	31'-3"	167	8	31'-3"	167	8	31'-3"	167
4a2		2	30'-8"	41	2	30'-8"	41	2	30'-8"	41	2	30'-8"	41
4b1		90	4'-9 1/2"	288	91	4'-9 1/2"	291	90	4'-9 1/2"	288	91	4'-9 1/2"	291
4b2		64	7'-11 1/2"	340	64	7'-11 1/2"	340	64	7'-11 1/2"	340	64	7'-11 1/2"	340
4c1 *		91	3'-6"	213	92	3'-6"	215	91	3'-6"	213	92	3'-6"	215
4c2 **		25	0'-5"	184	25	0'-5"	184	25	0'-5"	184	25	0'-5"	184
4c3 *		2	3'-2"	4	-	-	-	2	3'-2"	4	-	-	-
4d1		8	3'-2"	17	8	3'-2"	17	8	3'-2"	17	8	3'-2"	17
4d2		12	4'-7"	37	12	4'-7"	37	12	4'-7"	37	12	4'-7"	37
TOTAL (LBS.)		1132			1159			1158			1134		

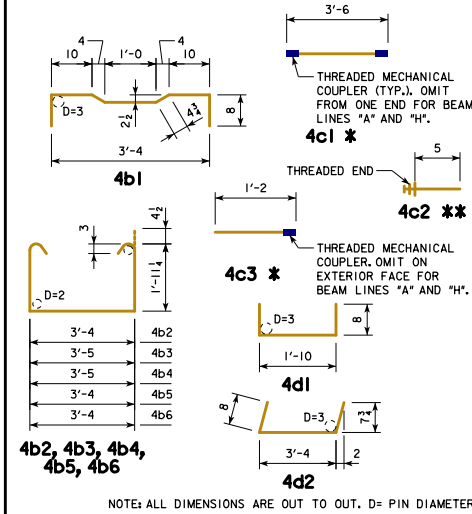
BENT BAR DETAILS



EPOXY COATED REINFORCING BAR LIST
27" x 48" x 60'-0" PPCBB, 15° SKEW

BEAM LINE		BEAM LINES "A" AND "H"			BEAM LINES "B" THRU "G"		
BAR	SHAPE	NO.	LENGTH	WEIGHT	NO.	LENGTH	WEIGHT
4a1		8	31'-3"	167	8	31'-3"	167
4a2		2	30'-8"	41	2	30'-8"	41
4b1		89	4'-9 1/2"	285	89	4'-9 1/2"	285
4b2		55	7'-11 1/2"	292	55	7'-11 1/2"	292
4b3		4	8'-0 1/2"	21	4	8'-0 1/2"	21
4b4		2	8'-0 1/2"	11	2	8'-0 1/2"	11
4b5		2	7'-11 1/2"	11	2	7'-11 1/2"	11
4b6		2	7'-11 1/2"	11	2	7'-11 1/2"	11
4c1 *		90	3'-6"	210	90	3'-6"	210
4c2 **		25	0'-5"	182	25	0'-5"	182
4c3 *		2	1'-2"	2	2	1'-2"	2
4c4		4	3'-4"	9	4	3'-4"	9
4d1		8	3'-2"	17	8	3'-2"	17
4d2		12	4'-8"	37	12	4'-8"	37
TOTAL (LBS.)		1139			1165		

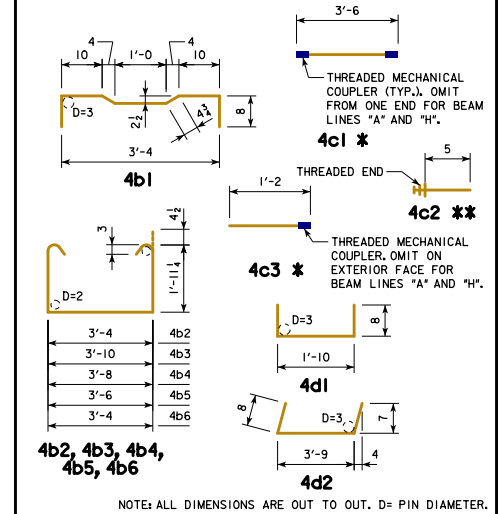
BENT BAR DETAILS



EPOXY COATED REINFORCING BAR LIST
27" x 48" x 60'-0" PPCBB, 30° SKEW

BEAM LINE		BEAM LINES "A" AND "H"			BEAM LINES "B" THRU "G"		
BAR	SHAPE	NO.	LENGTH	WEIGHT	NO.	LENGTH	WEIGHT
4a1		8	31'-3"	167	8	31'-3"	167
4a2		2	30'-8"	41	2	30'-8"	41
4b1		86	4'-9 1/2"	275	86	4'-9 1/2"	275
4b2		55	7'-11 1/2"	292	55	7'-11 1/2"	292
4b3		4	8'-5 1/2"	23	4	8'-5 1/2"	23
4b4		2	8'-3 1/2"	11	2	8'-3 1/2"	11
4b5		2	8'-1 1/2"	11	2	8'-1 1/2"	11
4b6		2	7'-11 1/2"	11	2	7'-11 1/2"	11
4c1 *		87	3'-6"	203	87	3'-6"	203
4c2 **		90	0'-5"	25	180	0'-5"	50
4c3 *		6	1'-2"	5	6	1'-2"	5
4c4		4	3'-8"	10	4	3'-8"	10
4d1		8	3'-2"	17	8	3'-2"	17
4d2		12	5'-1"	41	12	5'-1"	41
TOTAL (LBS.)		1132			1157		

BENT BAR DETAILS



NOTES:
 * INCLUDES MECHANICAL COUPLER(S). SEE BENT BAR DETAILS.
 ** SEE BENT BAR DETAILS. THE LENGTHS SHOWN DO NOT INCLUDE AN ALLOWANCE FOR THE THREADED END. BAR LENGTHS MAY NEED TO INCREASE DEPENDING ON THE MECHANICAL COUPLER ASSEMBLY USED. THE COST OF THE THREADED PORTION OF THESE BARS IS TO BE INCLUDED IN THE PRICE BID FOR THE BEAMS. THE WEIGHT OF THE THREADED END IS NOT INCLUDED IN THE QUANTITY SHOWN.

LATEST REVISION DATE

*Thomas E. M. D...
 APPROVED BY BRIDGE ENGINEER*

IOWADOT Highway Division

STANDARD DESIGN - 30'-0" ROADWAY, SINGLE SPAN
CONCRETE BOX BEAM BRIDGES

DECEMBER, 2016

27" x 48" x 60'-0" PPCBB DETAILS
REINFORCING BAR LIST

B30-47-16