

NOTE:
OMIT KEYWAY, MECHANICAL COUPLERS, AND 4c2 BARS ON EXTERIOR FACE OF EXTERIOR BEAMS.

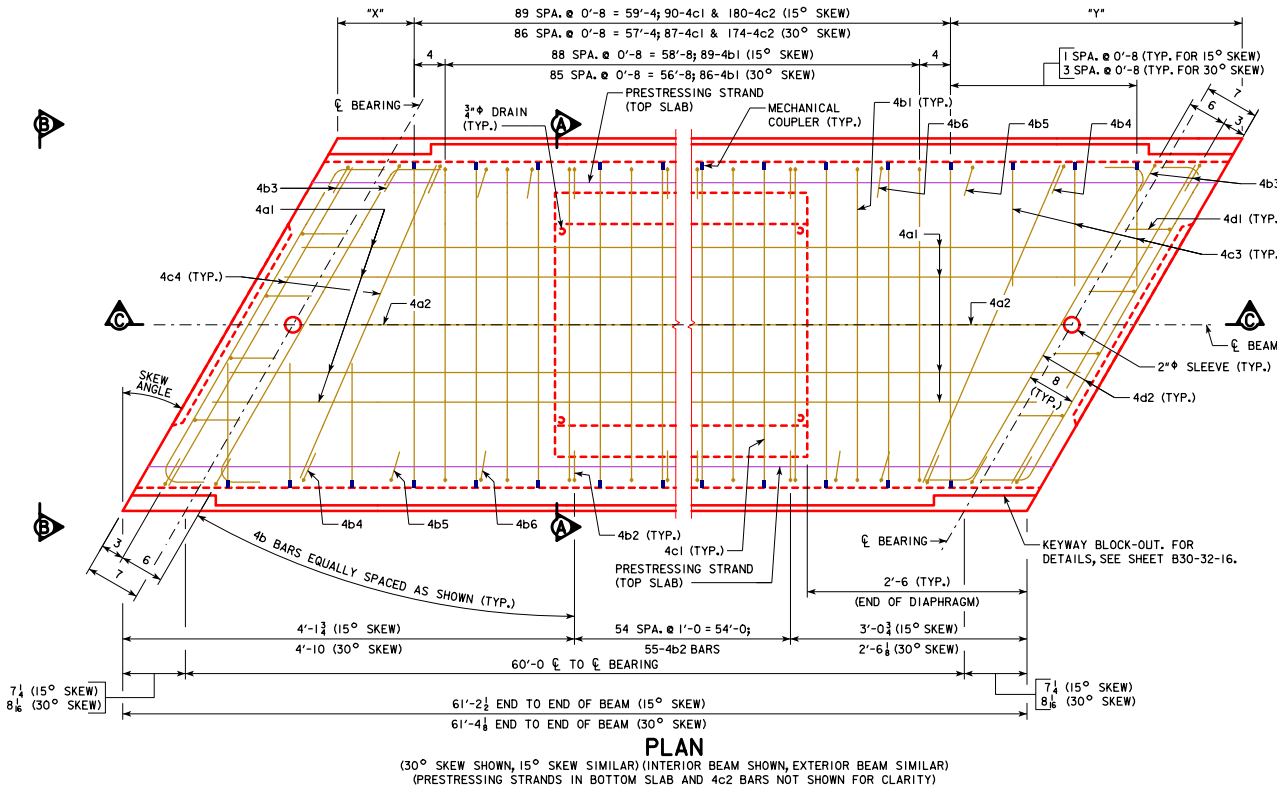


TABLE OF DIMENSION DATA				
BEAM LINE	15° SKEW		30° SKEW	
	"x"	"y"	"x"	"y"
A	1 1/2	1'-8 1/2	11 1/4	3'-0 1/4
B	2 3/8	1'-7 1/4	10 1/4	3'-1 1/4
C	3 1/2	1'-7	10 3/8	3'-1 1/2
D	4 3/8	1'-6 1/4	10 3/8	3'-1 1/2
E	5 1/4	1'-5 1/4	10	3'-2 1/4
F	6 1/8	1'-4 3/4	9 1/2	3'-2 3/4
G	7	1'-3 1/2	9 1/2	3'-2 3/4
H	7 1/2	1'-2 3/4	9 1/4	3'-2 1/4

NOTE:
FOR BEAM LINE DESIGNATIONS, SEE SHEET B30-06-16.

NOTES:
FOR VIEW B-B, SEE SHEET B30-41-16.
4a1 & 4a2 SHALL BE LAP SPLICED 1'-7" MINIMUM AT MIDSPAN.
FOR BEAM CHAMFER DETAILS, SEE SHEET B30-33-16.

LATEST REVISION DATE	
	STANDARD DESIGN - 30'-0 ROADWAY, SINGLE SPAN CONCRETE BOX BEAM BRIDGES DECEMBER, 2016
	27" x 48" x 60'-0 PPCBB DETAILS 15° AND 30° SKEW
APPROVED BY BRIDGE ENGINEER 	B30-46-16