

**JOINT TYPE FOR MOVEABLE ABUTMENT BRIDGES**

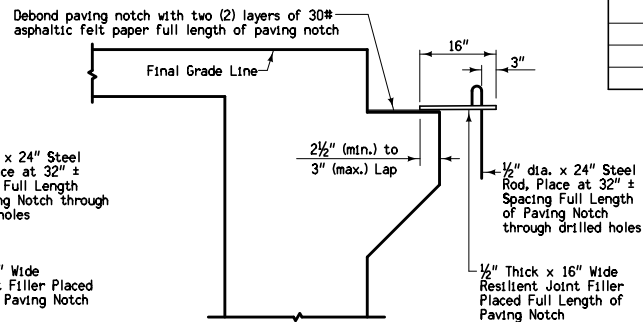
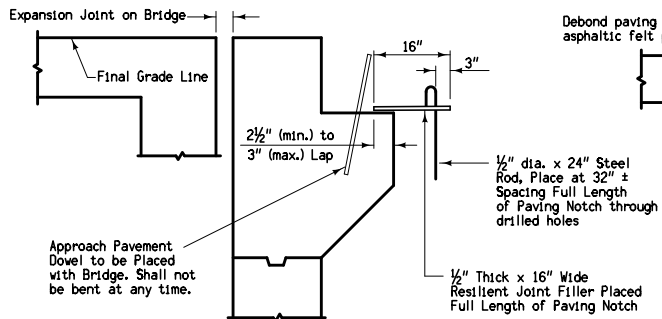
Joint	Maximum Bridge Length	
	Concrete Beam or Slab	Steel Girder
CF-1	370'	250'
CF-2	465'	320'
CF-3	575'	400'

For joint details, see PV-101.  
For curb details, see PV-102.

All transverse bars are #5.

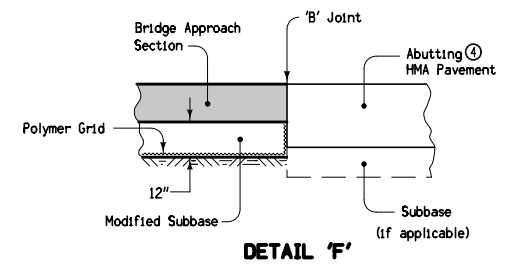
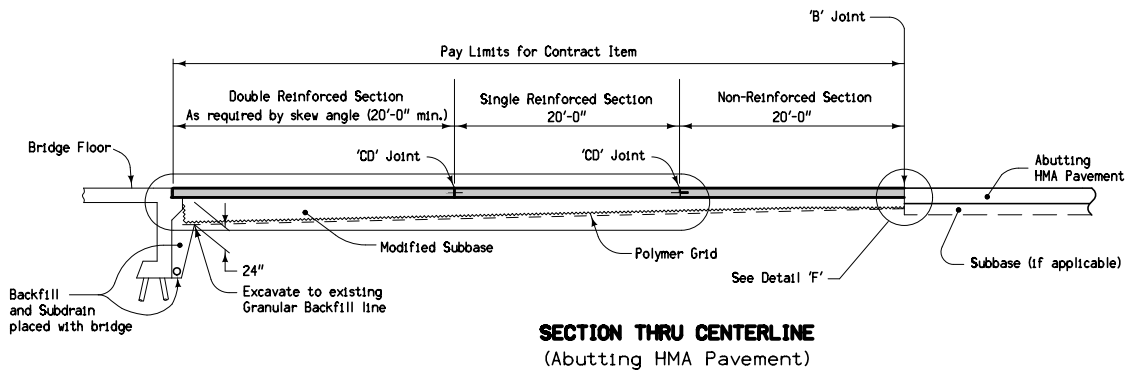
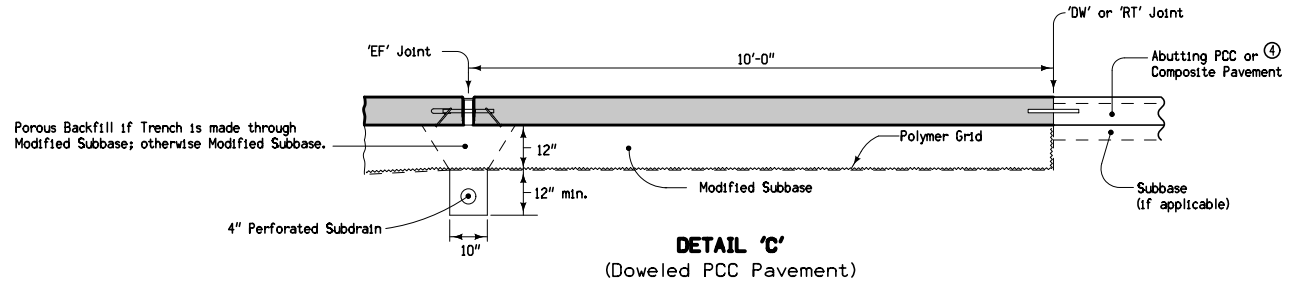
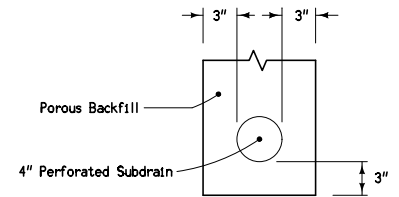
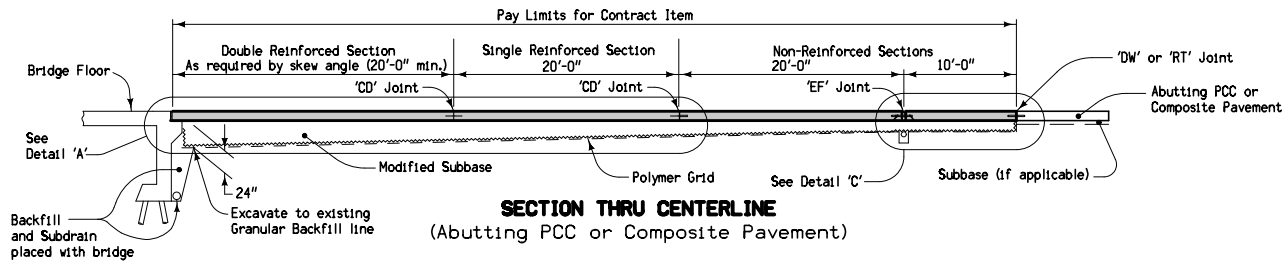
Possible Contract Item:  
Bridge Approach, RK-25

Possible Tabulation:  
112-6



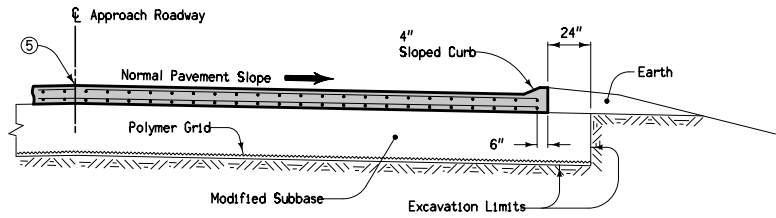
- ① 2" min. to 2 1/2" max. clear to bent bar.
- ② Minimum lap length: #5 Bars - 18"  
#6 Bars - 27"  
#8 Bars - 48"
- ③ If bridge is skewed, place additional #5 bar parallel to skewed face.

<p>Iowa Department of Transportation</p> <p><b>STANDARD ROAD PLAN</b></p> <p>REVISIONS: Updated references to renamed standards.</p> <p><i>Deanna Macfield</i> APPROVED BY DESIGN METHODS ENGINEER</p> <p><b>DOUBLE REINFORCED 10" APPROACH</b></p>	<p>REVISION</p> <p>7   04-19-11</p>
	<p><b>RK-25</b></p> <p>SHEET 1 of 3</p>

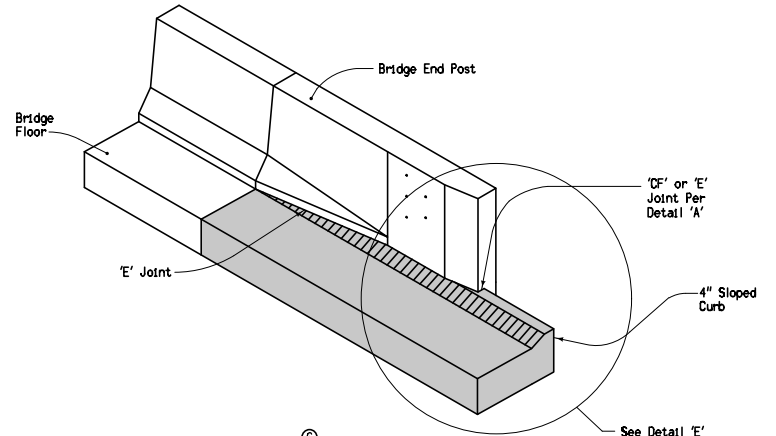


④ If abutting pavement (PCC or HMA) is not in place, see RK-30.

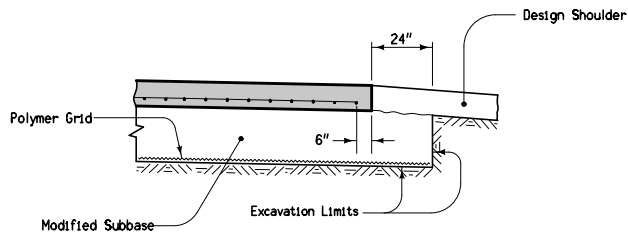
 Iowa Department of Transportation	REVISION	
	7	04-19-11
<b>STANDARD ROAD PLAN</b>	<b>RK-25</b>	
REVISIONS: Updated references to renamed standards.	SHEET 2 of 3	
 APPROVED BY DESIGN METHODS ENGINEER		
<b>DOUBLE REINFORCED 10" APPROACH</b>		



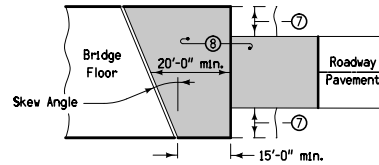
**SECTION A-A** ⑥



**DETAIL 'D'** ⑥  
(Joint Placement)

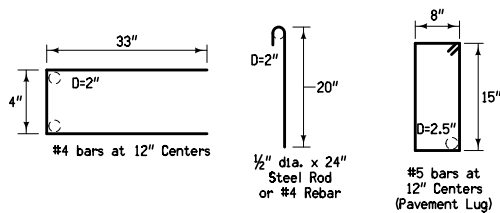


**SECTION B-B** ⑥

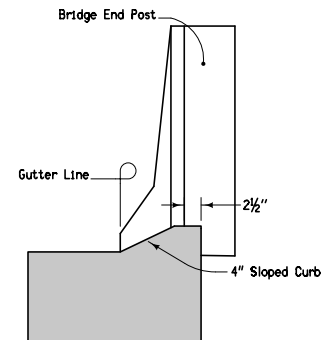


**APPROACH PAVEMENT LAYOUT AT A SKEW**

- ⑤ Longitudinal Joint: (PV-101)  
Single pour — Saw cut joint per Detail B.  
Two pours — Use 'KS-2' Joint
- ⑥ See RK-21, RK-22, or RK-23.
- ⑦ Design shoulder width.
- ⑧ Reinforced bridge approach section.



**BENT BAR SHAPES**



**DETAIL 'E'**  
(Back of Curb Placement)

 Iowa Department of Transportation <b>STANDARD ROAD PLAN</b>	REVISION	7	04-19-11
	<b>RK-25</b> SHEET 3 of 3		

REVISIONS: Updated references to renamed standards.

*Deanna Maifield*  
APPROVED BY DESIGN METHODS ENGINEER

**DOUBLE REINFORCED 10" APPROACH**