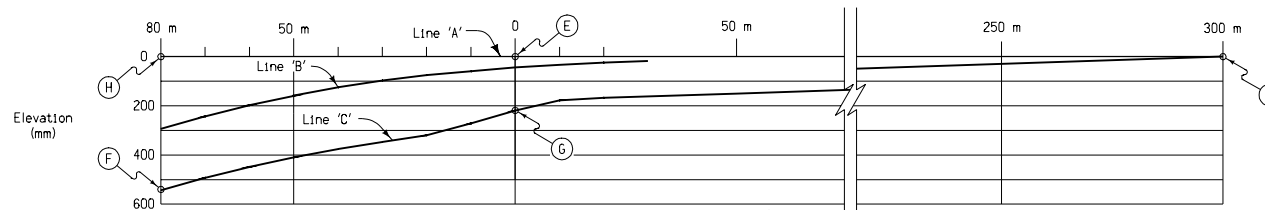


Ramp entrance pavement shall be the same thickness as mainline pavement.
Ramp entrance pavement shown by shaded area is 1663 square meters.
Special shaping of area between lines A and B may be required to assure proper drainage.

- ① For header construction details at the beginning of taper, refer to the appropriate Typical 7101 or 7102.
- ② Ramp entrance subbase shall be the same thickness as mainline subbase.
- ③ The loop pavement cross slope between J and E is determined by superelevation rotated about line C. Refer to Standard Road Plan RP-3 and plans for superelevation transition requirements.



NOTE: The algebraic difference between profile grade for Ramp Base Line at F and relative profile grade of Mainline at H is 0.54%.

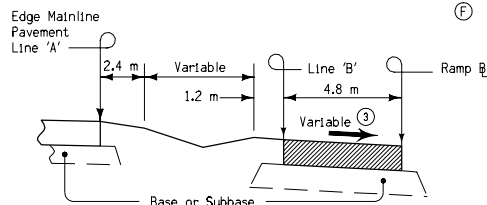
PROFILE

For jointing layout, see Standard Road Plan RV-10.

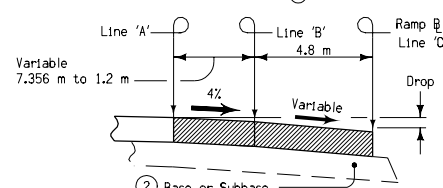
This design is based on 100 km/h design speed at "e" max = 6%.

For location equivalent stations, see Tabulation 101-15. Equate Point 'G' (Ramp stationing) to Point 'E' (Mainline Stationing).

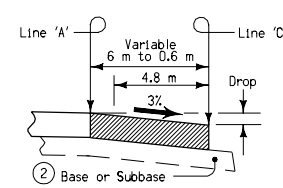
TABLE OF OFFSETS AND DROPS FOR 4.8 m RAMP TAPER																				
(E) Along Line A (m)		80	70	60	50	40	30	20	10	0	10	20	50	100	150	200	250	300		
From Line 'A' To Line 'B'	Offset (m)	7.356	6.083	4.955	3.971	3.131	2.435	1.880	1.469	1.200										
	Slope (%)	Constant 4.00% Slope										3.64								
	Drop (mm)	294	243	198	159	125	97	75	59	44										
From Line 'B' To Line 'C'	Offset (m)	Constant 4.8 m Offset																		
	Slope (%)	5.20	5.20	5.20	5.20	5.20	5.20	5.10	4.44	3.64										
	Drop (mm)	250	250	250	250	250	250	245	213	175										
From Line 'A' To Line 'C'	Offset (m)									6.000	5.800	5.600	5.000	4.000	3.000	2.000	1.000	0.000		
	Slope (%)									3.64	3.07	3.00	Constant 3.00%							
	Drop (mm)	544	493	448	409	375	347	320	272	219	178	168	150	120	90	60	30	0		
(F) Distance From Point (G) Along Line C (m)		79.638	69.626	59.631	49.651	39.684	29.728	19.780	9.840	0.000									(P)	



SECTION A-A



SECTION B-B



SECTION C-C

All dimensions given in millimeters unless noted.

M METRIC VERSION		
	STANDARD ROAD PLAN	
	RV-5	
	REVISION: Change Detail Sheet 550-5 to Standard Road Plan RV-10.	REVISION NO. 4
	APPROVED BY: <i>William J. Sten</i> DESIGN METHODS ENGINEER	REVISION DATE 04-19-05
ACCELERATION TAPER FOR 4.8 m ENTRANCE RAMP		