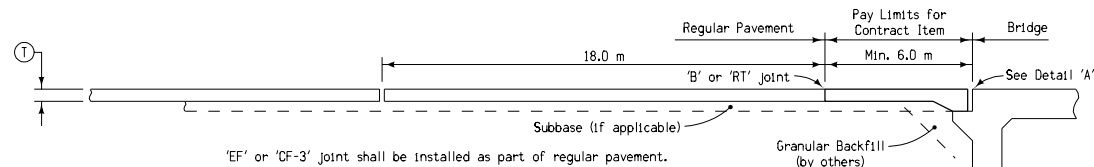
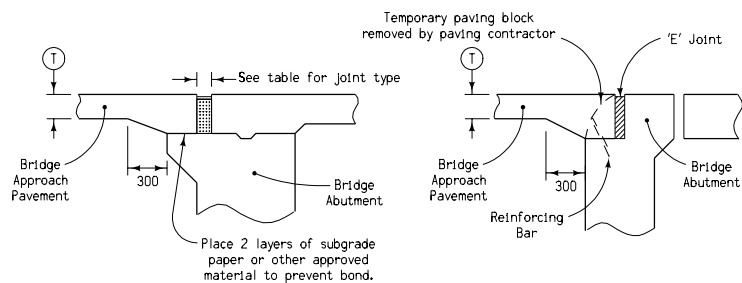


TYPICAL BRIDGE APPROACH PLAN



SECTION A-A

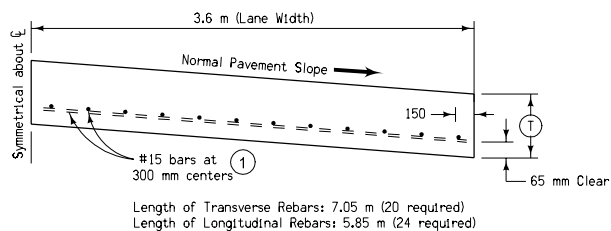


MOVABLE ABUTMENT BRIDGE

FIXED ABUTMENT BRIDGE

DETAIL 'A'

'T' is same thickness as is required for remainder of project pavement.



TYPICAL HALF SECTION B

① If bridge is skewed, place additional #15 bar parallel to skewed face.

Concrete used for the bridge approach section shall be the same as the that used for remainder of project pavement.

Contract items:

Bridge Approach, RK-18  
Standard or Slip-Form PCC Pavement

Tabulation: 112-6

For joint details,  
see Standard Road Plans  
RH-50, RH-51, and RH-52.

Quantity for 6 meter long approach section for 7.2 meter  
pavement is 43.2 square meters of "Bridge Approach."

JOINT TYPE FOR  
MOVABLE ABUTMENT BRIDGES

Joint	Concrete Beam Maximum Bridge Length	Steel Girder Maximum Bridge Length
CF-1	112.5 m	76.2 m
CF-2	141.7 m	97.5 m
CF-3	175.3 m	121.9 m

All dimensions given in millimeters unless noted.

<b>M</b> <b>REVISION</b> <b>7</b> <b>METRIC VERSION</b>	<b>Iowa Department of Transportation</b> Highway Division	
	<b>STANDARD ROAD PLAN</b>	
	<b>RK-18</b>	
	REVISION: Clarify longitudinal joint type.	REVISION NO. 7
	APPROVED BY: <i>Deanna Mayfield</i> DESIGN METHODS ENGINEER	REVISION DATE 04-18-06
<b>BRIDGE APPROACH DETAILS</b> (SECONDARY ROADS)		