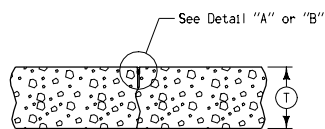
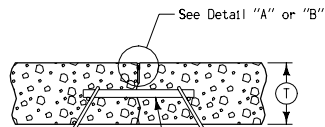


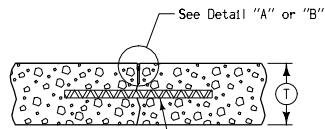
See Note ⑥  
**'B'**  
**PLAIN JOINT**  
**FOR ABUTTING PAVEMENT SLABS**



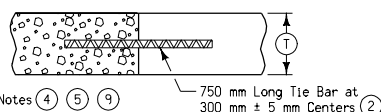
See Note ⑧  
**'C'**  
**CONTRACTION JOINT**



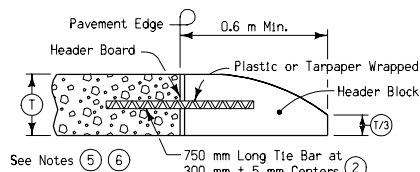
See Notes ① ⑤ ⑧ ⑩  
**'CD'**  
**DOWELED CONTRACTION JOINT**



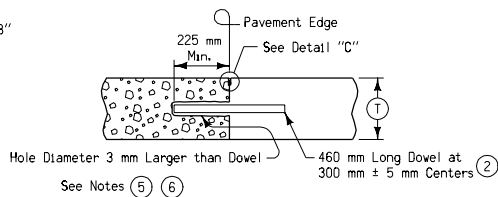
See Note ⑤  
**'CT'**  
**TIED CONTRACTION JOINT**



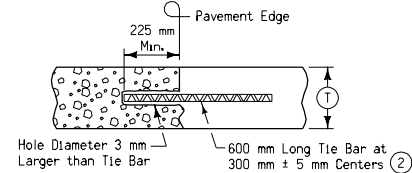
**'DW'**  
**DAY'S WORK JOINT (Non-Working)**



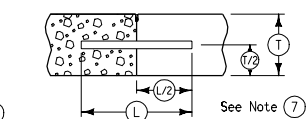
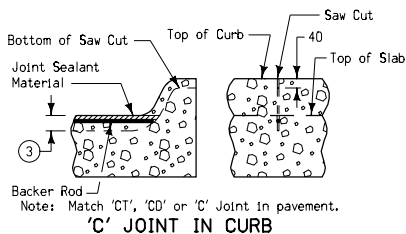
**'HT'**  
**HEADER JOINT**  
**(END RIGID PAVEMENT)**



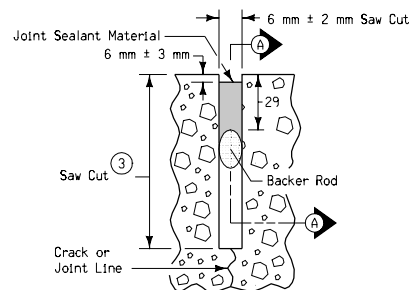
**'RD'**  
**ABUTTING PAVEMENT JOINT**



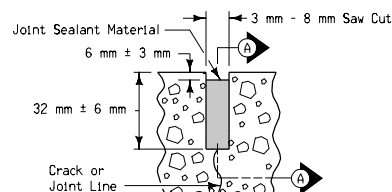
**'RT'**  
**ABUTTING PAVEMENT JOINT**  
**RIGID TIE**



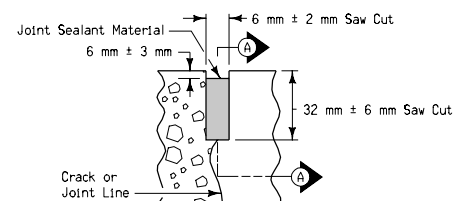
**TYPICAL BAR PLACEMENT**  
Applies to all joints unless otherwise detailed.



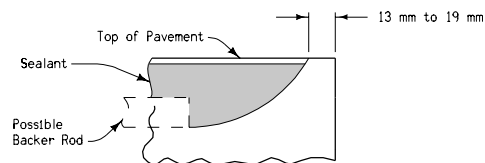
**DETAIL "A"**  
(Sawcut formed by conventional concrete sawing equipment)



**DETAIL "B"**  
(Sawcut formed by approved early concrete sawing equipment)



**DETAIL "C"**




**SECTION A-A**  
**DETAIL AT EDGE OF PAVEMENT**

- ① See Standard Road Plan RH-55 for dowel assembly fabrication details.
- ② Refer to Bar Size Table.
- ③ Depth of sawcut shall be  $T/3 \pm 6$  mm, except 'C' joint shall be  $T/4 \pm 6$  mm.
- ④ 'DW' joint shall be located at a midpanel location between future 'C' or 'CD' joints. It shall be no closer than 1.5 meters to a 'C' or 'CD' joints.
- ⑤ Bars in Transverse Joints shall be placed according to Standard Road Plan RH-58.
- ⑥ Edge with 5 millimeter tool for length of joint indicated if formed; edging not required when cut with diamond blade saw. Remove header block and board when second slab is poured.
- ⑦ When tying into old pavement, ① represents the depth of sound Portland and Cement Concrete.
- ⑧ Unless otherwise specified, transverse contraction joints in mainline pavement shall be 'CD' when ① is greater or equal to 200 millimeters, 'C' when ① is less than 200 millimeters.
- ⑨ 'RT' joint may be used in lieu of 'DW' joint at the end of the days work. Any pavement damaged due to the drilling shall be removed at the contractor's expense.

BAR SIZE TABLE			
T	< 200 mm	≥ 200 mm but < 250 mm	≥ 250 mm
Dowel Diameter (minimum)	19	31	38
Tie Bar Size	#20	#30	#35

All dimensions given in millimeters unless noted.

M		REVISION	
		16	10-17-0
		RH-50	
		SHEET 1 of 1	
METRIC VERSION	STANDARD ROAD PLAN		
	REVISIONS: Added tolerances for sawcut depths and increased range of sawcut widths on Detail "B".		
	<i>Deanna Mayfield</i>		
	APPROVED BY DESIGN METHODS ENGINEER		
		JOINTS (TRANSVERSE CONTRACTION)	