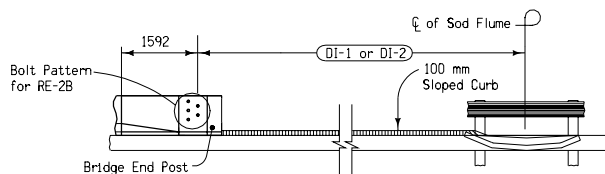
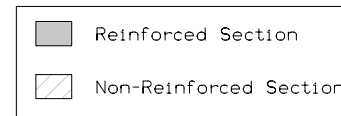
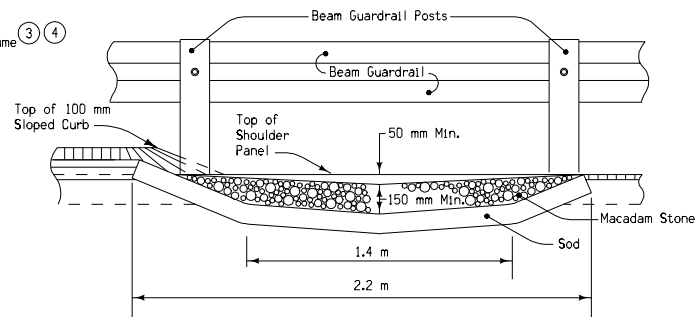


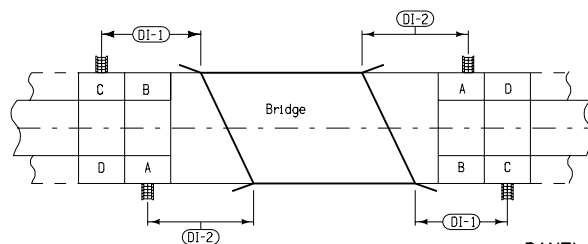
SECTION A-A  
 (Shoulder Panel)



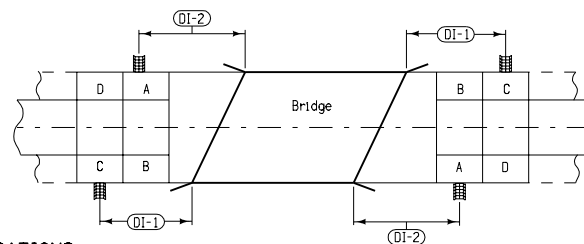
ELEVATION



SECTION C-C



PANEL LOCATIONS



Price bid for "Bridge End Drain, RF-39" shall be considered full compensation for furnishing, installing, and constructing the Bridge End Drain as shown.

Contract Items:

Paved Shoulder, P.C. Concrete  
 Bridge End Drain, RF-39

Incidental to Paved Shoulder:

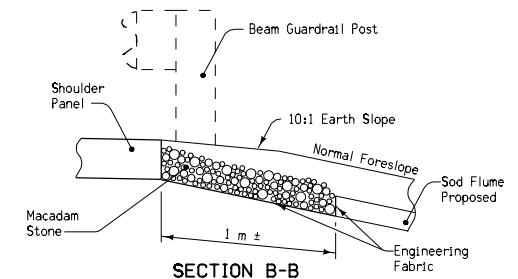
Modified Subbase  
 Polymer Grid

Incidental to Bridge End Drain:

Sodding with specified anchoring method  
 Macadam Stone Base Material  
 Special shaping

Tabulation: 104-8A

- ① Paved shoulder panel will be paid for as "Paved Shoulder, P.C. Concrete".
- ② Modified subbase and polymer grid shall be installed under shoulder panels as shown in Section A-A on Standard Road Plan RK-20(3), RK-25(3), or RK-26(3).
- ③ Sod flume shall be located 1.5 meters or more from the nearest transverse pavement joint. Joints are determined by the bridge approach section.
- ④ Sod flume shall extend to ditch bottom.



SECTION B-B

All dimensions given in millimeters unless noted.

METRIC VERSION	M	Iowa Department of Transportation Highway Division	
		<b>STANDARD ROAD PLAN</b>	<b>RF-39</b>
		REVISIONS: Sod Flume shall extend to ditch bottom.	REVISION NO. 10
		<i>William J. Sten</i> APPROVED BY DESIGN METHODS ENGINEER	REVISION DATE 04-19-05
		<b>SOD FLUME FOR BRIDGE END DRAIN</b>	