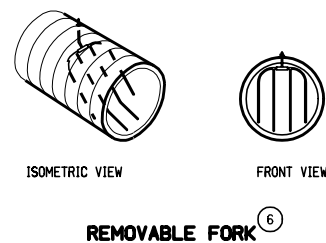
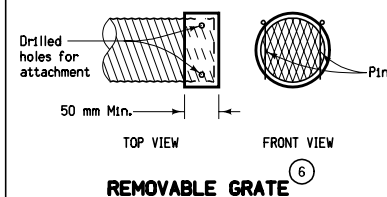


LONGITUDINAL AND TRANSVERSE OUTLETS



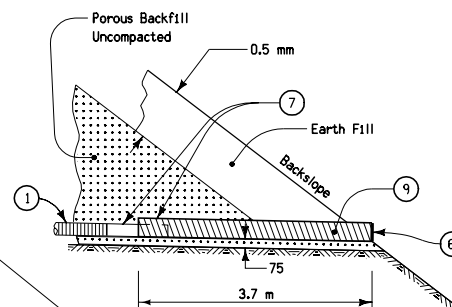
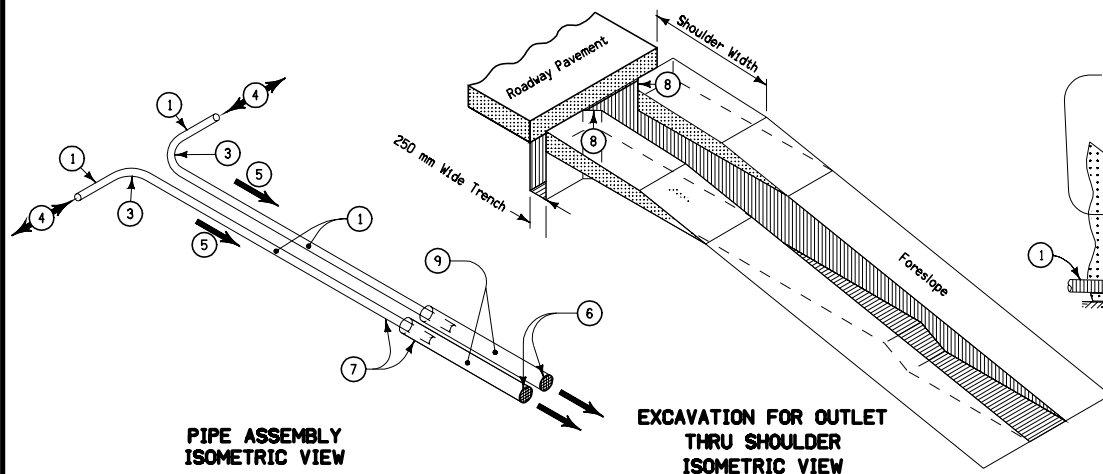
RODENT GUARDS

Transverse and backslope subdrains require only single outlets. Double outlet pipes shall be used on all longitudinal subdrain systems, except at the beginning and end of the system. At these locations, a single outlet pipe shall be used.


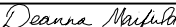
- ① 100 mm perforated Subdrain (Polyethylene Corrugated Tubing).
- ② On projects where existing shoulder material is removed, the shoulder material shall be replaced as per Placing Longitudinal Subdrains of the current Standard and Supplemental Specifications.
- ③ Y or T connection shall not be allowed. Place subdrain on 200 mm minimum radius.
- ④ Direction of flow.
- ⑤ 150 mm minimum drop in elevation between longitudinal subdrain and outlet, 300 mm minimum drop for projects using recycled PCC subbase.
- ⑥ Removable grate rodent guard shall be used on all projects except those using recycled PCC subbase. For projects using recycled PCC subbase, use the removable fork rodent guard. See Materials I.M. 443.01 for approved suppliers.
- ⑦ 150 mm corrugated metal pipe outlet or 4 corrugated double-walled PE or PVC pipe with an appropriate coupler. If metal pipe is used, the pipes should be coupled in one of the following ways: (1) Use an inside fit reducer coupler (coupler must be inserted a minimum of 300 mm CMP); or (2) Insert 300 mm of the 100 mm subdrain into the 150 mm metal outlet pipe, then fully seal the entire opening with grout.
- ⑧ Trench shall be beveled to provide a minimum of 75 mm of porous backfill surrounding all portions of subdrain pipe.
- ⑨ Corrugated metal pipe outlet 50 mm larger than existing subdrain pipe, or corrugated double-walled PE or PVC pipe of the same diameter as the existing subdrain pipe.
- ⑩ Class 'A' Crushed Stone or Special Backfill shall be mounded over outlet and carefully compacted to avoid damaging outlet pipe.

Contract Item:
Subdrain Outlet, RF-19E
Tabulation: 104-9

All dimensions given in millimeters unless noted.



BACKSLOPE OUTLET TYPICAL SECTION

METRIC VERSION	 Iowa Department of Transportation	REVISION	
		11	10-16-07
		STANDARD ROAD PLAN	
		RF-19E	
		SHEET 1 of 1	
	REVISIONS: Changed Fill atop trench to Class 'A' Crushed Stone.		
			
	APPROVED BY DESIGN METHODS ENGINEER		
	OUTLETS FOR LONGITUDINAL, TRANSVERSE AND BACKSLOPE SUBDRAINS		