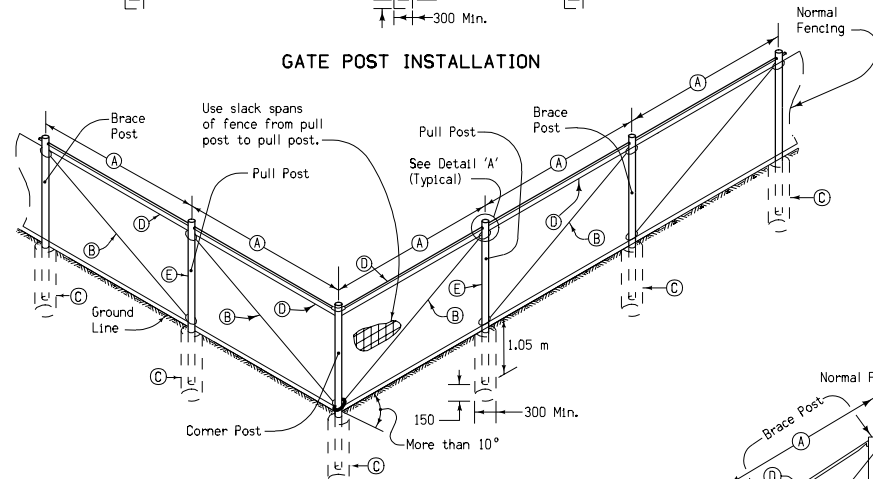
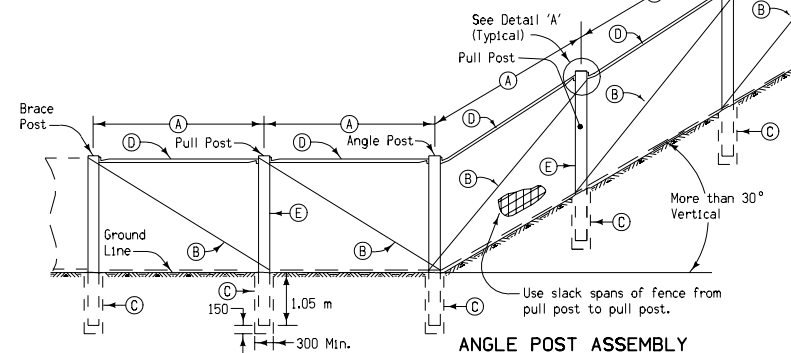


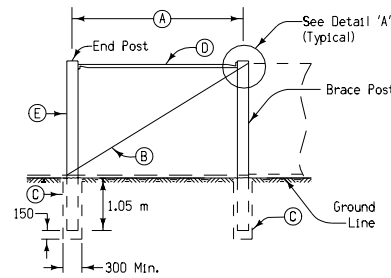
GATE POST INSTALLATION



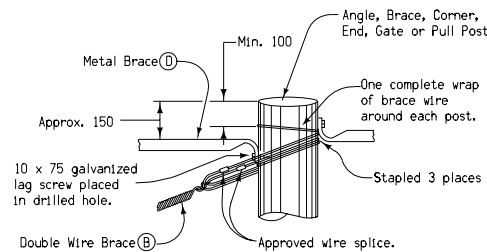
CORNER POST ASSEMBLY



ANGLE POST ASSEMBLY



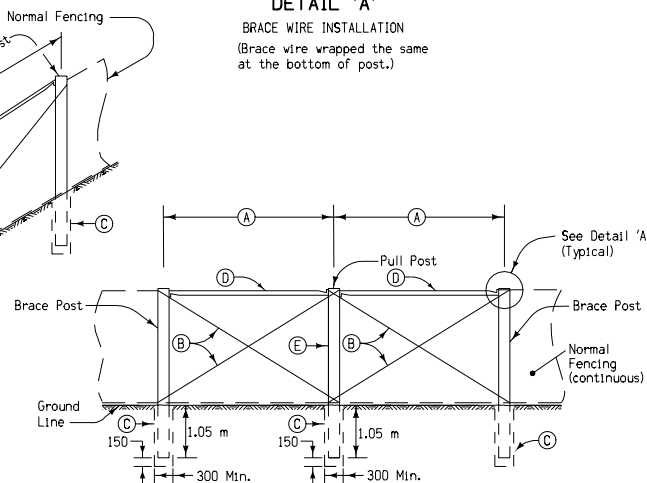
TYPICAL END POST INSTALLATION



The two brace wires shall be twisted together to produce proper tension in the brace assembly.

DETAIL 'A'

BRACE WIRE INSTALLATION
(Brace wire wrapped the same as at the bottom of post.)



PULL POST ASSEMBLY

GENERAL NOTES:

Contract items for Field Fence construction are:

- Field Fence
- Field Fence Gate
- Field Fence Brace Panel

Refer to Standard Road Plan RC-7 for details of post assemblies.

The Contractor shall not disturb or destroy any Right-of-Way markers.

- (A) Brace Panel
- (B) Brace wire: 4 strands of 3.77 mm wire.
- (C) Details indicate placement of granular material for certain posts. Posts may be driven if satisfactory method is demonstrated to the Engineer. Granular material will not be required for driven posts.
- (D) Metal Brace 2.4 meters long.
- (E) Wrap wire fabric around post.
- (I) Unless specified otherwise on detail plans, gates shall be 5 meters in width. Double gate is required only for widths more than 5 meters. Exact details of gate design shall be subject to the approval of the Engineer. Installation shall be as recommended by the manufacturer.

All dimensions given in millimeters unless noted.

M	Iowa Department of Transportation Highway Division		
	STANDARD ROAD PLAN		RC-8A
	REVISION: Add Note About ROW Markers.		REVISION NO. 2
	<i>William J. Sten</i> APPROVED BY DESIGN METHODS ENGINEER		REVISION DATE 04-15-03
	DETAILS FOR FIELD FENCE CONSTRUCTION		