

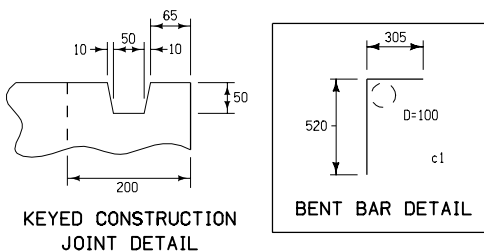
Contract Item:
Intake, RA-41

- ① 2:1 slope (horizontal:vertical)
- ② Shall be 1000 millimeters when attaching the RA-42 extension unit.
- ③ Additional keyed construction joint when attaching the RA-42 extension unit.
- ④ Dimensions shown are for the construction of a 150 millimeter standard curb as a part of the pavement. Modifications may be made to conform to other curb shapes.

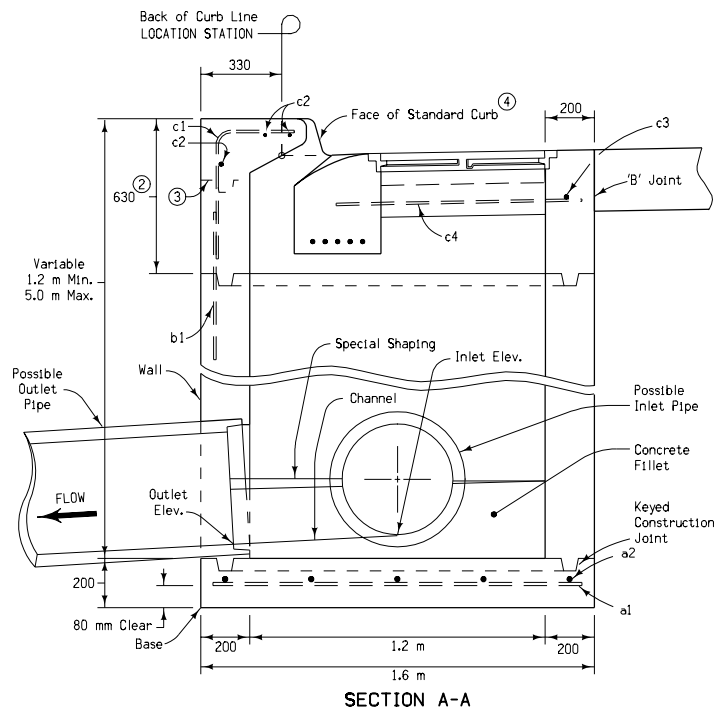
Placing sequence: 1. Base; 2. Walls; 3. Top; 4. Insert

REINFORCING BAR LIST							
BAR	SIZE	LOCATION	SHAPE	NO.	LENGTH	MASS	SPACING
a1	15	Base	—	5	1500	12 kg	350
a2	15	Base	—	5	1500	12 kg	350
b1	15	Wall	—	5	915	7 kg	350
c1	15	Top	┐	5	825	7 kg	350
c2	15	Top	—	3	1500	7 kg	See Detail
c3	15	Top	—	6	1500	14 kg	See Detail
c4	15	Top	—	6	1000	10 kg	See Detail
Total					69 kg		

For joint details,
see Standard Road Plans
RH-50, RH-51, and RH-52.



All dimensions given in millimeters unless noted.



M METRIC VERSION		
	STANDARD ROAD PLAN RA-41	
	<small>REVISION: Change 'EE' joint to 'ED' joint and remove notes covered in the Specifications Book; change title.</small>	<small>REVISION NO.</small> 4
	<small>APPROVED BY DESIGN METHODS ENGINEER</small>	<small>REVISION DATE</small> 04-19-05
	CURB INTAKE (UNDER PAVEMENT)	