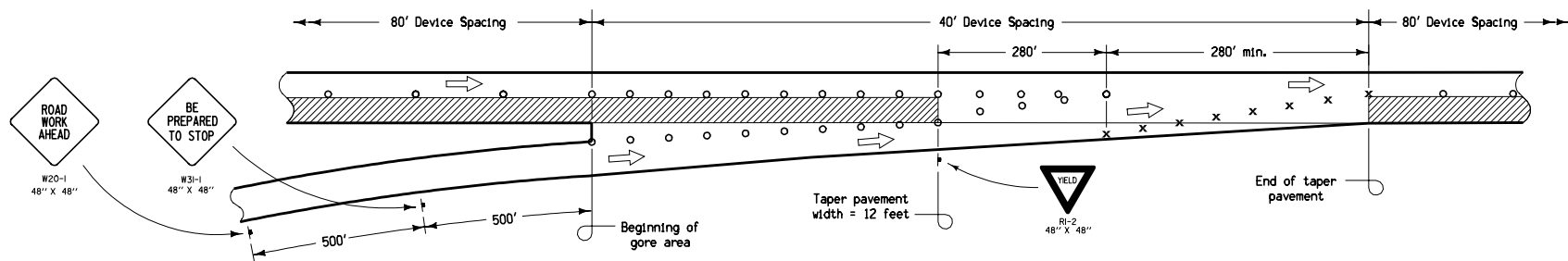
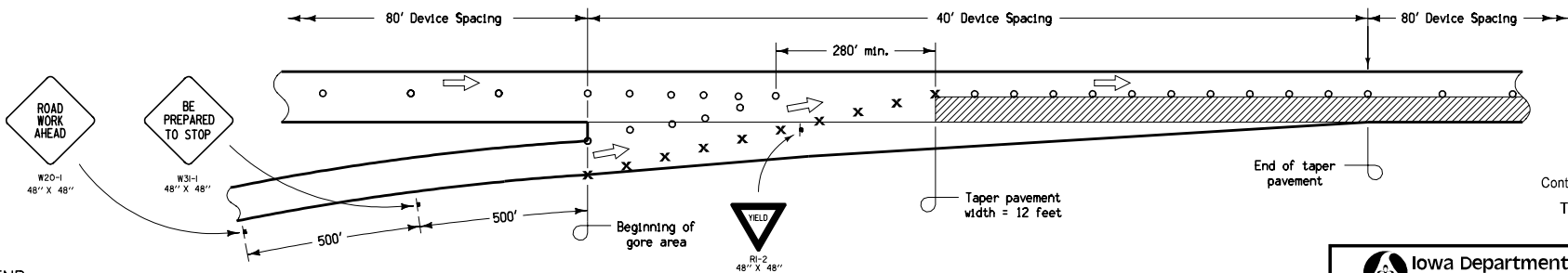


LEFT LANE CLOSURE THROUGH ENTRANCE RAMP



RIGHT LANE CLOSURE THROUGH ENTRANCE RAMP



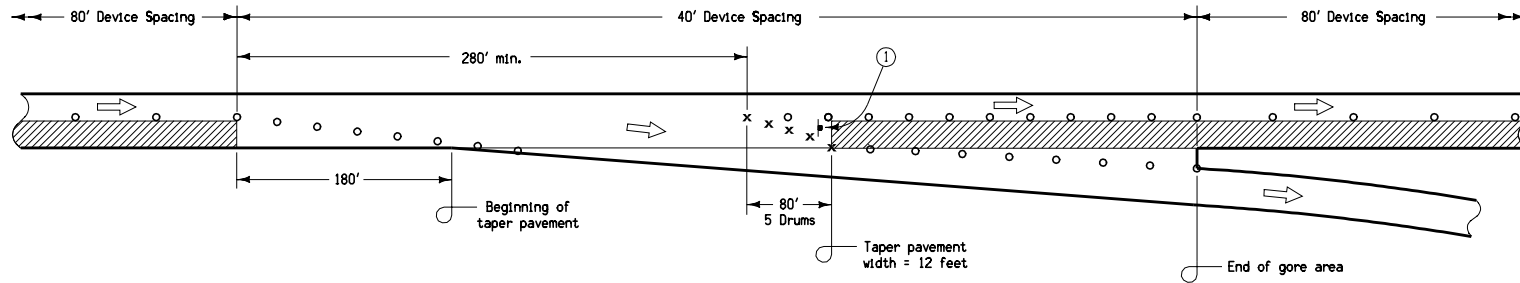
STAGING THROUGH ENTRANCE RAMP

LEGEND

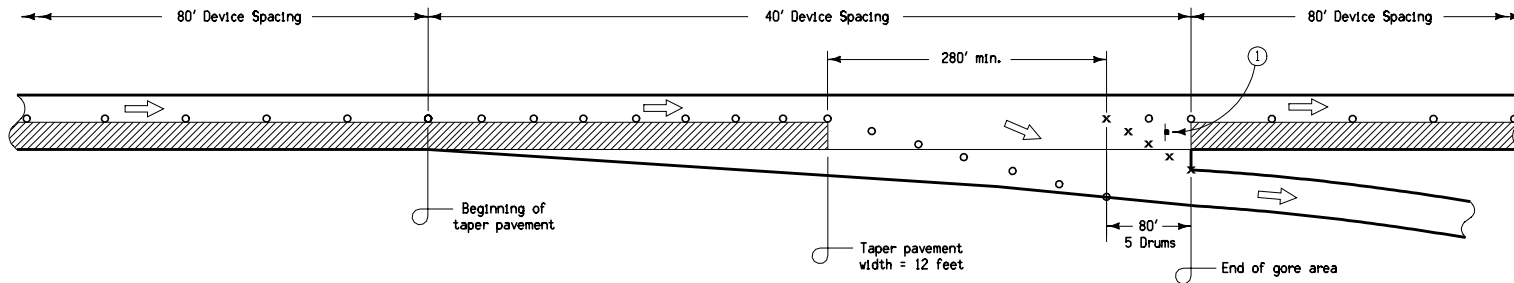
- ▬ Traffic Sign
- x Drum
- o 42" Channelizer or Vertical Panel
- ← Direction of Traffic
- ▨ Work Area

Contract Item:
Traffic Control

<p>Iowa Department of Transportation</p> <p>STANDARD ROAD PLAN</p> <p>REVISIONS: General rewrite for clarity. Modified openings and spacing through ramps.</p> <p><i>Deanna Mayfield</i> APPROVED BY DESIGN METHODS ENGINEER</p> <p>LANE CLOSURE AT RAMPS</p>	<p>REVISION</p> <p>2 10-16-07</p>
	<p>TC-420</p>
	<p>SHEET 1 of 2</p>



RIGHT LANE CLOSURE THROUGH EXIT RAMP



STAGING THROUGH EXIT RAMP

LEGEND

- Traffic Sign
- Drum
- 42" Channelizer or Vertical Panel
- Direction of Traffic
- Work Area

- ① Temporary EXIT sign, mounted so that bottom of sign is a minimum of 3' above pavement surface. If in place for more than one day, mount an Exit Number Panel with the proper exit number above the temporary EXIT sign. See RD-65 for details.

<p>Iowa Department of Transportation</p> <p>STANDARD ROAD PLAN</p> <p>REVISIONS: General rewrite for clarity. Modified openings and spacing through ramps.</p> <p><i>Deanna Mayfield</i></p> <p>APPROVED BY DESIGN METHODS ENGINEER</p> <p>LANE CLOSURE AT RAMPS</p>	<p>REVISION</p> <p>2 10-16-07</p>
	<p>TC-420</p>
	<p>SHEET 2 of 2</p>