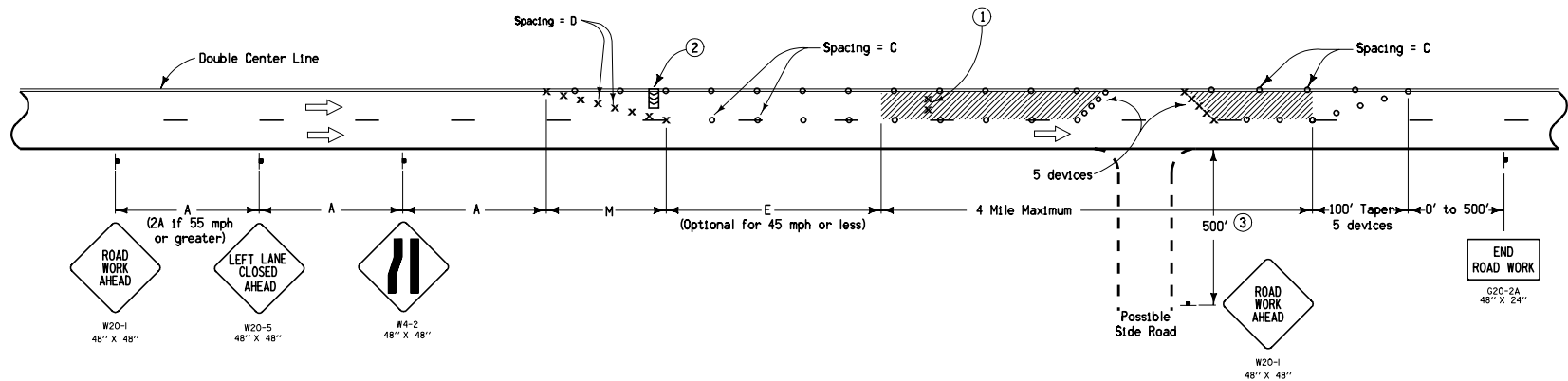
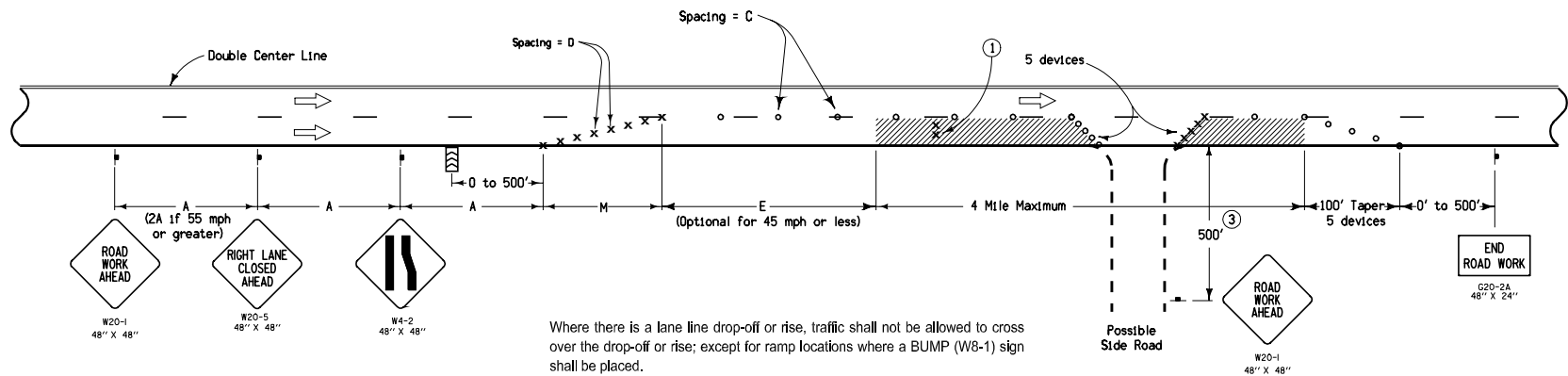


## LEFT LANE CLOSURE



## RIGHT LANE CLOSURE



Where there is a lane line drop-off or rise, traffic shall not be allowed to cross over the drop-off or rise; except for ramp locations where a BUMP (W8-1) sign shall be placed.

Drop-offs greater than a nominal 4 inches shall not be allowed during non-working hours.

Contract Item:  
Traffic Control

## LEGEND

- ⌋ Traffic Sign
- X Drum
- o 42" Channelizer or Vertical Panel
- ⏏ Arrow Panel
- ▨ Work Area
- ➡ Direction of Traffic

SPEED LIMIT (mph)	A	C	D	E	M
25 or less	300'	40'	25'	80'	125'
30 - 35	500'	80'	35'	160'	245'
40 - 45	700'	80'	40'	400'	540'
50 - 55	1000'	80'	40'	560'	680'
60 or greater	1000'	80'	40'	720'	880'

- ① Place two drums in the closed lane at 1000-foot intervals. Where core outs, holes, or uncured concrete exists within the work area, place an additional pair of drums just ahead of each.
- ② Place arrow panel within the closed lane behind the drums and as close to the beginning of the taper as practical.
- ③ Where side road speed limit is 40 mph or less, distance may be reduced to 200 feet.

<b>Iowa Department of Transportation</b> <b>STANDARD ROAD PLAN</b> <small>REVISIONS: Changed interval to 1000' in circle note 1. Added two general notes. Modified speed limit table. Removed Type III barricades.</small> <i>Deanna Mayfield</i> <small>APPROVED BY DESIGN METHODS ENGINEER</small>	<b>REVISION</b> 1 10-16-07
	<b>TC-419</b> <b>SHEET 1 of 1</b>
	<b>LANE CLOSURE ON</b> <b>UNDIVIDED HIGHWAY</b>