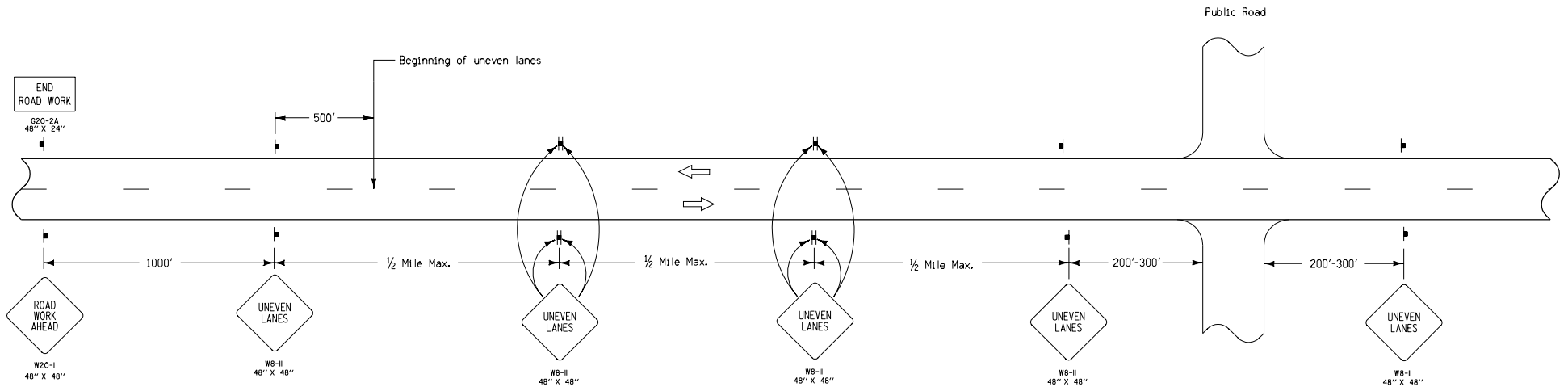
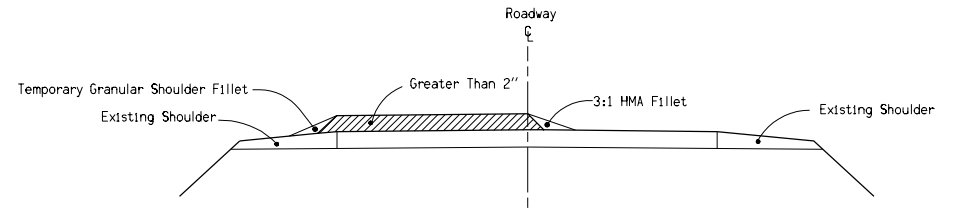
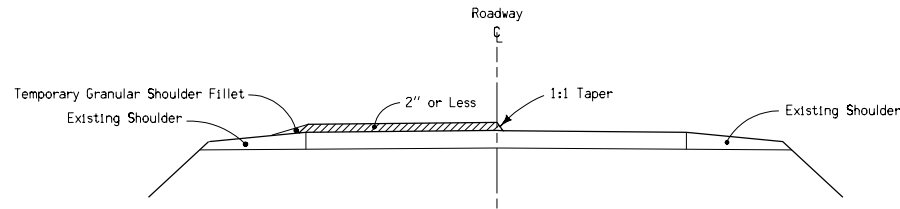


DESIGN LIFT THICKNESSES 2" OR LESS

DESIGN LIFT THICKNESSES GREATER THAN 2" (WITH FILLET)



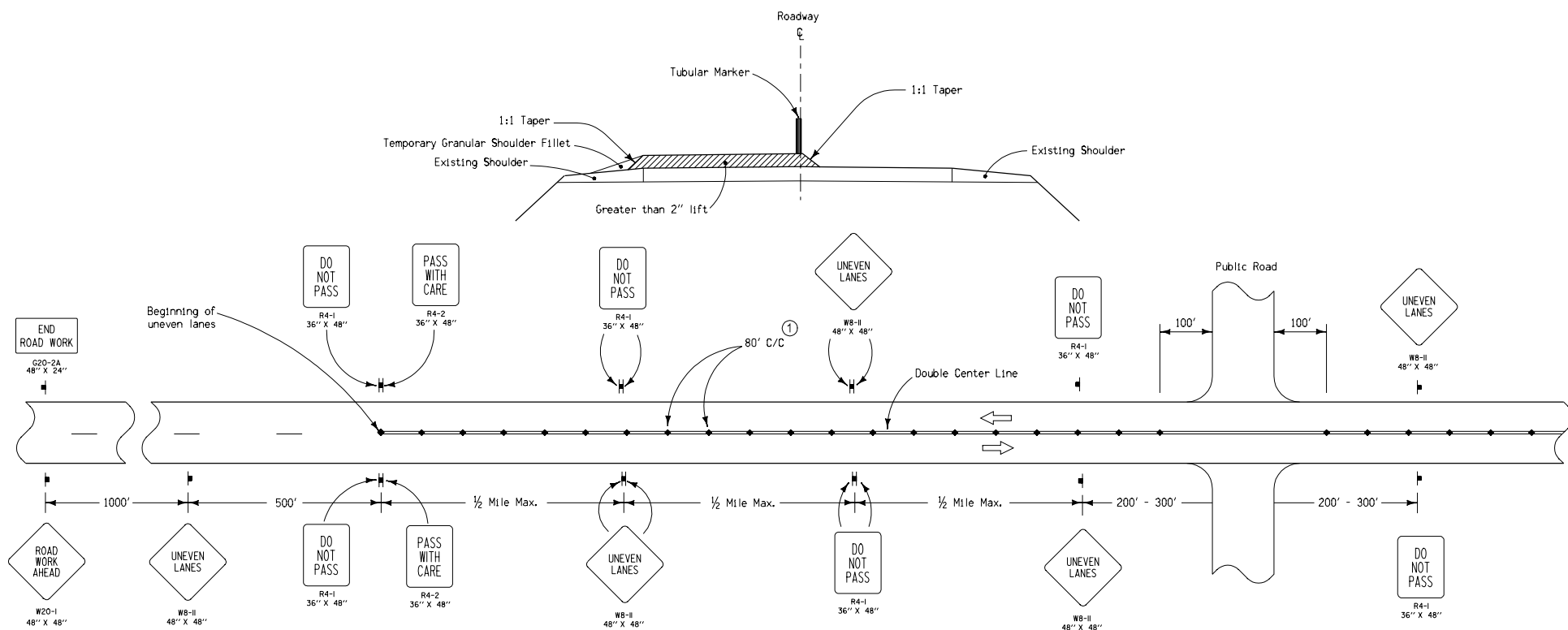
Contract Item:
Traffic Control

LEGEND

- Traffic Sign
- Direction of Traffic

<p>Iowa Department of Transportation</p> <p>STANDARD ROAD PLAN</p> <p>REVISIONS: Replaces RS-17A, RS-17B and RS-17C.</p> <p><i>Deanna Mayfield</i> APPROVED BY DESIGN METHODS ENGINEER</p>	REVISION	
	NEW	10-17-06
	<p>TC-282</p> <p>SHEET 1 of 2</p>	
<p>UNEVEN LANES</p>		

DESIGN LIFT THICKNESSES GREATER THAN 2" (WITHOUT FILLET)




"No-Passing" zones shall not exceed 2.5 miles for ADT less than 2500 vpd or 2.0 miles for ADT from 2500 to 5000 vpd.

① Spacing = 40 feet where horizontal curve radius is less than 1000 feet.

Contract Items:
Traffic Control
Painted Pavement Markings

Tabulation: 108-22

 <p>Iowa Department of Transportation</p>	REVISION	
	NEW	10-17-0
	<p>TC-282</p> <p>SHEET 2 of 2</p>	
<p>STANDARD ROAD PLAN</p>		
<p>REVISIONS: Replaces RS-17A, RS-17B and RS-17C.</p>		
<p><i>Deanna Muford</i></p> <p>APPROVED BY DESIGN METHODS ENGINEER</p>		
<p>UNEVEN LANES</p>		

LEGEND

- ▬ Traffic Sign
- ← Direction of Traffic
- ◆ Tubular Marker