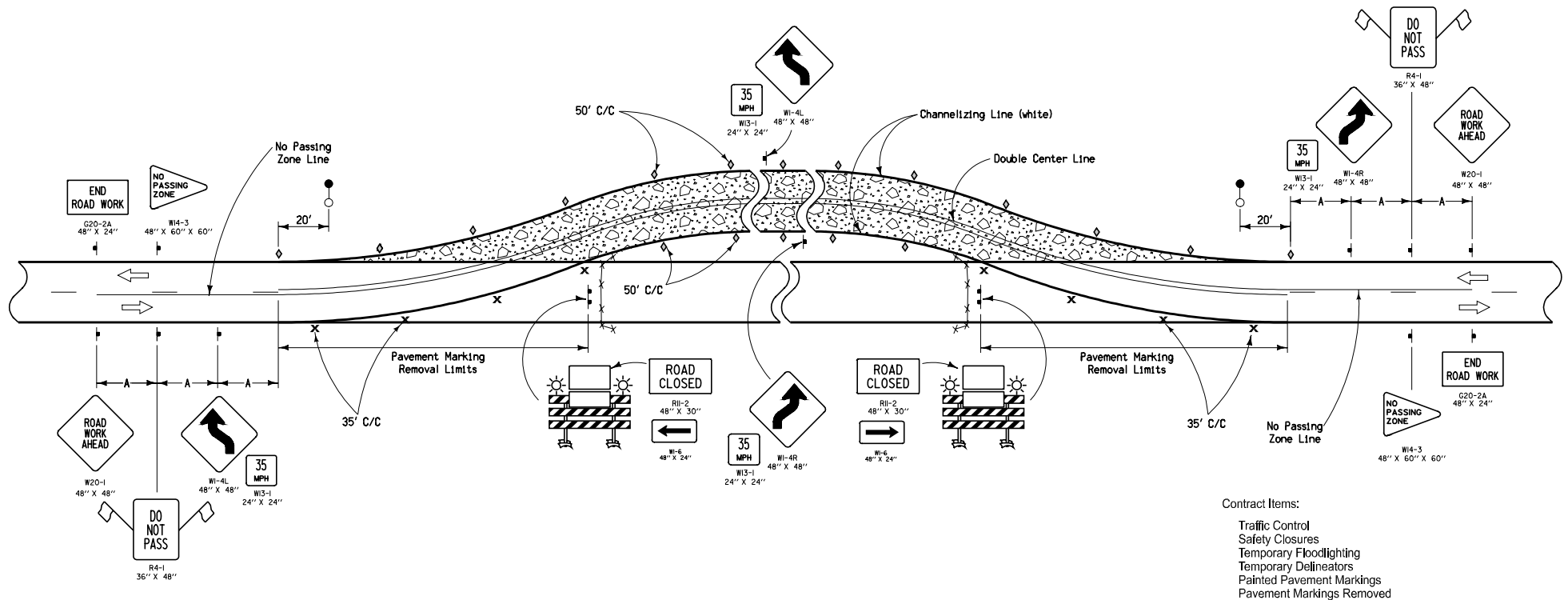


TWO-LANE DETOUR



Contract Items:

Traffic Control
Safety Closures
Temporary Floodlighting
Temporary Delineators
Painted Pavement Markings
Pavement Markings Removed

Tabulations:

108-13A
108-17
108-22
108-27
108-18

LEGEND

- ▬ Traffic Sign
- × Drum
- ▬ Type III Barricade
- ▬ Orange Mesh Safety Fence
- ◇ Single White Delineators (mount back to back)
- Temporary Floodlighting
- ☀ Type 'A' Low-Intensity Flashing Warning Light
- ➡ Direction of Traffic

| SPEED LIMIT (mph) | A |
|-------------------|------|
| 35 or less | 250' |
| 40 - 45 | 350' |
| 50 or greater | 500' |

The Engineer may change the advisory speed. If reduced below 35 mph, the Reverse Curve signs (W1-4L and W1-4R) shall be changed to Reverse Turn signs (W1-3LA and W1-3RA).

| | |
|---|-------------------------------|
| Iowa Department of Transportation STANDARD ROAD PLAN <small>REVISIONS: Removed note "Temporary Traffic Signals shall be span-vire mounted" from sheet 2.</small> <i>Deanna Macfady</i> <small>APPROVED BY DESIGN METHODS ENGINEER</small> | REVISION 2 04-15-08 |
| | TC-253 SHEET 1 of 2 |
| | PAVED ON-SITE DETOUR |
| | PAVED ON-SITE DETOUR |

ONE-LANE DETOUR

The diagram illustrates a one-lane detour setup for a road closure. It shows a two-lane road with a central closure area. Traffic is diverted into a single lane on either side of the closure. The diagram includes various traffic signs such as 'END ROAD WORK', 'NO PASSING ZONE', 'ONE LANE ROAD AHEAD', 'ROAD CLOSED', 'DO NOT PASS', and '35 MPH'. It also shows pavement markings, including 'Channelizing Line (white)', 'Pavement Marking Removal Limits', and 'No Passing Zone Line'. The diagram is divided into three main sections: the approach to the closure, the closure area itself, and the exit from the closure. The approach section shows the transition from a two-lane road to a single-lane road. The closure area shows the single-lane detour around the closed section. The exit section shows the transition back to a two-lane road. The diagram includes a legend for symbols used, a table for speed limits, and a table for timing for actuated signals.

LEGEND

- Traffic Sign
- Drum
- Type III Barricade
- Orange Mesh Safety Fence
- Temporary Traffic Signal
- Single White Delineators (mount back to back)
- Temporary Floodlighting
- Type 'A' Low-Intensity Flashing Warning Light
- Type 'B' High-Intensity Flashing Warning Light
- Direction of Traffic
- Vehicle Detection Area

| SPEED LIMIT (mph) | A |
|-------------------|------|
| 35 or less | 250' |
| 40 - 45 | 350' |
| 50 or greater | 500' |

The Engineer may change the advisory speed. If reduced below 35 mph, the Reverse Curve signs (W1-4L and W1-4R) shall be changed to Reverse Turn signs (W1-3LA and W1-3RA).

| TIMING FOR ACTUATED SIGNALS | | Distance Between Stop Lines | | All Red (secs.)* | |
|-----------------------------|--|-----------------------------|----|------------------|----|
| Recommended Settings, secs. | | Distance Between Stop Lines | | All Red (secs.)* | |
| Initial = 12.0 | | 400' | 10 | 900' | 21 |
| Extension = 2.5 | | 500' | 12 | 1000' | 23 |
| Maximum Green = 45.0 | | 600' | 14 | 1100' | 25 |
| Yellow = 3.0 | | 700' | 16 | 1200' | 28 |
| All Red = (see table) | | 800' | 19 | 1300' | 30 |


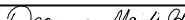
* Range of values are based on an operating speed of 30 mph

| SPEED LIMIT (mph) | A |
|-------------------------|------|
| 35 or less | 250' |
| 40 - 45 | 350' |
| 50 or greater | 500' |

| TIMING FOR ACTUATED SIGNALS | | Distance Between Stop Lines | All Red (secs.)* | Distance Between Stop Lines | All Red (secs.)* |
|-----------------------------|-------------|-----------------------------------|------------------------|-----------------------------------|------------------------|
| Recommended Settings, secs. | | | | | |
| Initial = | 12.0 | | | 900' | 21 |
| Extension = | 2.5 | 400' | 10 | 1000' | 23 |
| Maximum Green = | 45.0 | 500' | 12 | 1000' | 21 |
| Yellow = | 3.0 | 600' | 14 | 1100' | 25 |
| All Red = | (see table) | 700' | 16 | 1200' | 28 |
| | | 800' | 19 | 1300' | 30 |

* Range of values are based on an operating speed of 30 mph

The Engineer may change the advisory speed. If reduced below 35 mph, the Reverse Curve signs (W1-4L and W1-4R) shall be changed to Reverse Turn signs (W1-3LA and W1-3RA).

| | | |
|---|-----------------------------|--|
|  Iowa Department of Transportation | REVISION 2 04-15-08 | |
| | TC-253 | |
| | SHEET 2 of 2 | |
| STANDARD ROAD PLAN | | |
| REVISIONS: Removed note "Temporary Traffic Signals shall be span-wire mounted" from sheet 2. | | |
| <div style="text-align: center;">  APPROVED BY DESIGN METHODS ENGINEER </div> | | |
| <div style="text-align: center;"> PAVED ON-SITE DETOUR </div> | | |