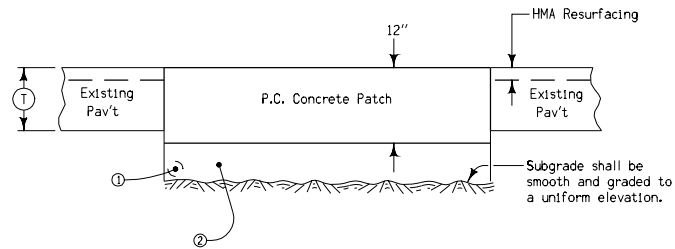
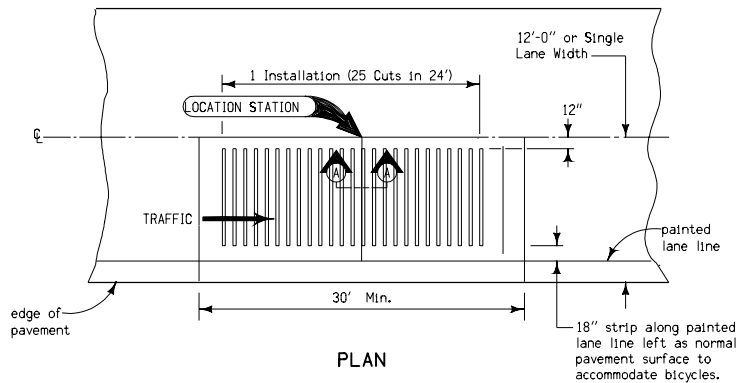


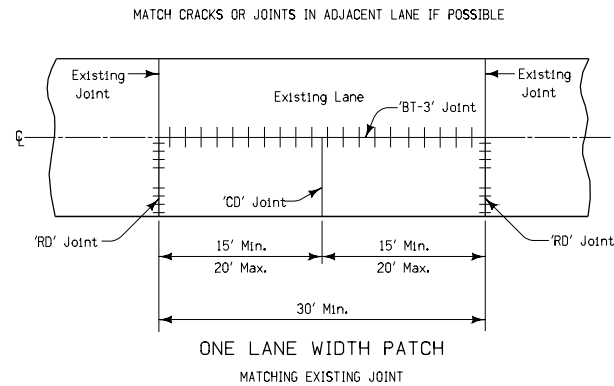
PAVEMENT REMOVAL DETAILS



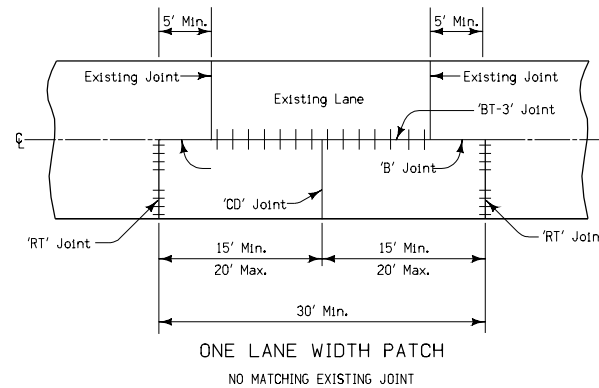
LONGITUDINAL SECTION



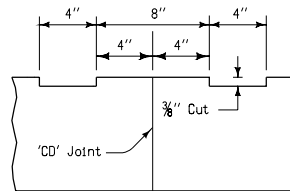
PLAN



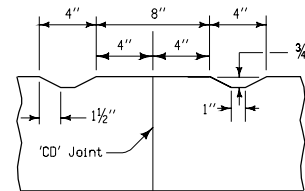
ONE LANE WIDTH PATCH
MATCHING EXISTING JOINT



ONE LANE WIDTH PATCH
NO MATCHING EXISTING JOINT



SECTION A-A
RUMBLE STRIP CUT IN NEW
P.C.C. CONCRETE



SECTION A-A
RUMBLE STRIP PLACED IN
PLASTIC P.C.C. CONCRETE

If the existing pavement is full depth HMA, then a 'B' Joint shall be constructed around the perimeter of the patch.

The patch can be up to 14' wide if no new joint is being established or the patch does not lap over an old joint.

Price bid for "Rumble Strip Panel (In Full Depth Patch)," each, shall be full compensation for placing the rumble strips in the full depth patch.

Contract Items:


Patches, Full-Depth Finish, by Area
Patches, Full-Depth Patches, by Count
Rumble Strip Panel (In Full Depth Patch)

Tabulations:

102-6C
112-7

- ① If longitudinal subdrain (shoulder) is not to be placed or if not present on side of roadway to be patched, then place proposed 3" slotted corrugated pipe at low end of patch.
- ② 6 inches granular subbase if required by plan. When placed, granular subbase should extend over longitudinal subdrain, if present.

For joint details,
see Standard Road Plans
RH-50 and RH-51.

 Iowa Department of Transportation	REVISION	
	3	10-17-06
	RR-7	
	SHEET 1 of 1	
STANDARD ROAD PLAN		
REVISIONS: Remove saw cut on outside of removal area. Realign the note numbers.		
Deanna Mayfield		
APPROVED BY DESIGN METHODS ENGINEER		
FULL DEPTH PCC RUMBLE STRIP PATCH		