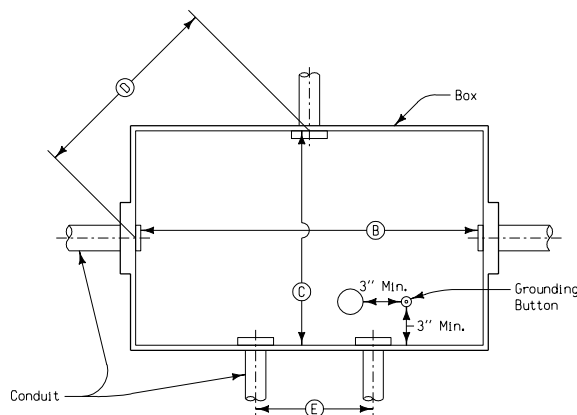


JUNCTION BOX



JUNCTION BOX REQUIREMENTS

For straight pulls Min. 'B' = 8 diameters of larger conduit
For opposite wall Min. 'C' = 6 diameters of larger conduit
For right angle turns Min. 'D' = 8 diameters of larger conduit

GENERAL NOTES:

The details indicated hereon are for typical junction boxes used in electrical circuitry for highway lighting. Alternate designs may be submitted to the Engineer for approval.

Materials and methods of construction shall be in accordance with current Standard and Supplemental Specifications.

Refer to appropriate Standard Road Plans and project plans for additional details.

Type 1 Junction Boxes shall conform to the requirements of "NEMA 4 - Watertight", UL approved, and be of the outside flange variety as shown.

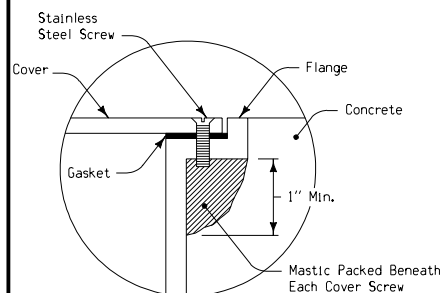
Type 2 Junction Boxes shall conform to the requirements of "NEMA 3 - Raintight", UL approved, and be of the inside flange variety as shown.

Covers of junction boxes installed in locations subject to pedestrian traffic shall have an approved anti-skid pattern. Approved galvanized steel covers may be substituted for cast iron.

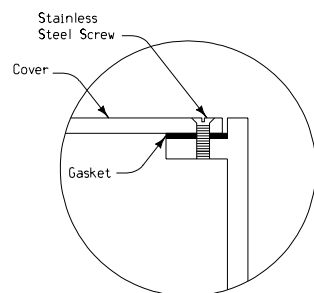
Grounding buttons shall be fitted with 3/8" x 3/4" brass screws unless otherwise specified.

Type, size and location of holes will be shown on the plans. Drilled and tapped holes shall be bossed, if necessary, to provide 5 full threads.

Slip holes shall be used only for junction box drains unless otherwise specified on plans.

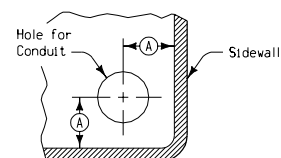


TYPE 1



TYPE 2

CORNER DETAILS OF JUNCTION BOX



CONDUIT LOCATION FOR LOCK NUT AND BUSHING CLEARANCE - 'A'										
Conduit Size	1/2"	3/4"	1"	1 1/4"	1 1/2"	2"	2 1/2"	3"	3 1/2"	4"
Minimum Clearance	1"	1"	1 1/8"	1 3/8"	1 1/2"	1 3/4"	2 1/8"	2 1/2"	2 7/8"	3 1/8"

MINIMUM SPACING BETWEEN CONDUIT CENTERS - 'E'										
Size	1/2"	3/4"	1"	1 1/4"	1 1/2"	2"	2 1/2"	3"	3 1/2"	4"
1/2"	1 1/4"	1 3/8"	1 5/8"	1 7/8"	2"	2 3/8"	2 5/8"	3"	3 3/4"	3 5/8"
3/4"		1 1/2"	1 3/4"	2"	2 1/8"	2 1/2"	2 3/4"	3 1/8"	3 3/4"	3 5/8"
1"			2"	2 1/4"	2 3/8"	2 3/4"	3"	3 3/8"	3 5/8"	4"
1 1/4"				2 1/2"	2 5/8"	3"	3 1/4"	3 3/8"	3 5/8"	4 1/4"
1 1/2"					2 3/4"	3 1/8"	3 3/8"	3 5/8"	4"	4 3/8"
2"						3 1/2"	3 3/4"	4 1/4"	4 3/8"	4 3/4"
2 1/2"							4"	4 3/8"	4 5/8"	5"
3"								4 3/4"	5"	5 3/8"
3 1/2"									5 1/4"	5 5/8"
4"										6"


 Iowa Department of Transportation
Project Development Division

STANDARD ROAD PLAN RM-37

REVISION: New - replaces Standard Road Plan RM-9.

REVISION NO. New

REVISION DATE 04-27-99

APPROVED BY:  DESIGN METHODS ENGINEER

JUNCTION BOX
(CAST IRON)