

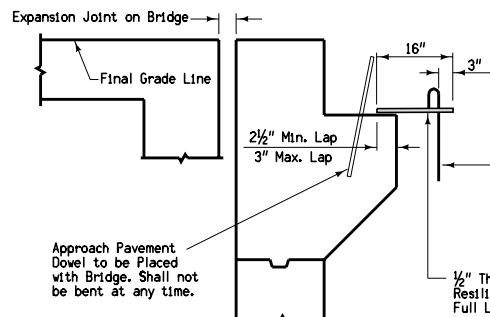
All Transverse Bars are #5.

#### JOINT TYPE FOR MOVEABLE ABUTMENT BRIDGES

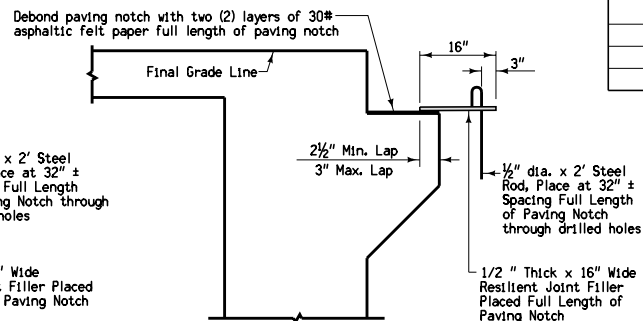
Joint	Maximum Bridge Length	
	Concrete Beam or Slab	Steel Girder
CF-1	370'	250'
CF-2	465'	320'
CF-3	575'	400'

For joint details, see Standard Road Plans RH-50, RH-51, and RH-52.

Contract Items:  
Bridge Approach, RK-25  
Tabulation: 112-6



**DETAIL 'B' (Fixed Abutment)**



**DETAIL 'B' (Moveable Abutment)**

- 2" min. to 2 1/2" max. clear to bent bar.
- Minimum lap length: #5 Bars - 18"  
#6 Bars - 27"  
#8 Bars - 48"
- If bridge is skewed, place additional #5 bar parallel to skewed face.



**STANDARD ROAD PLAN**

REVISION  
2 10-16-07

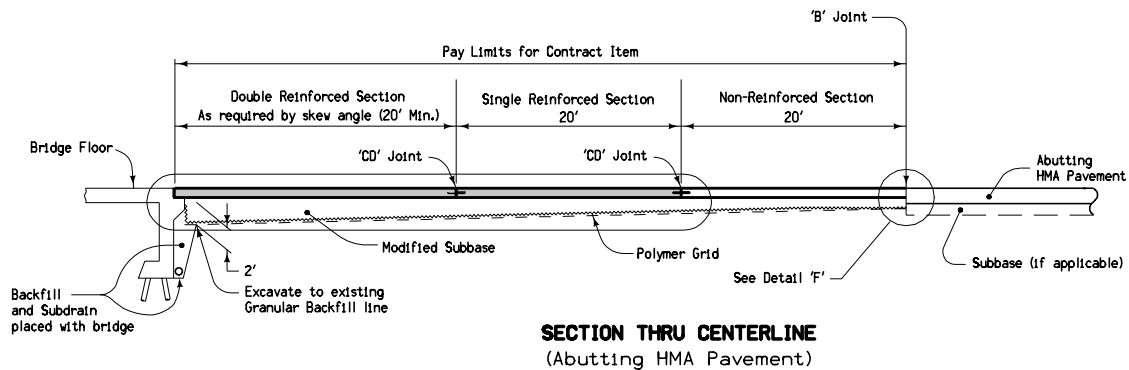
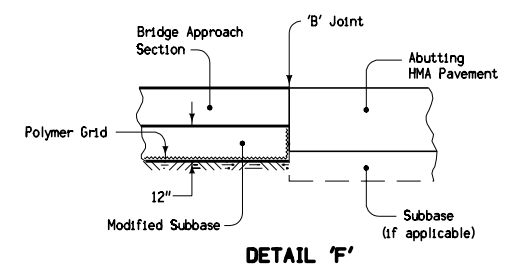
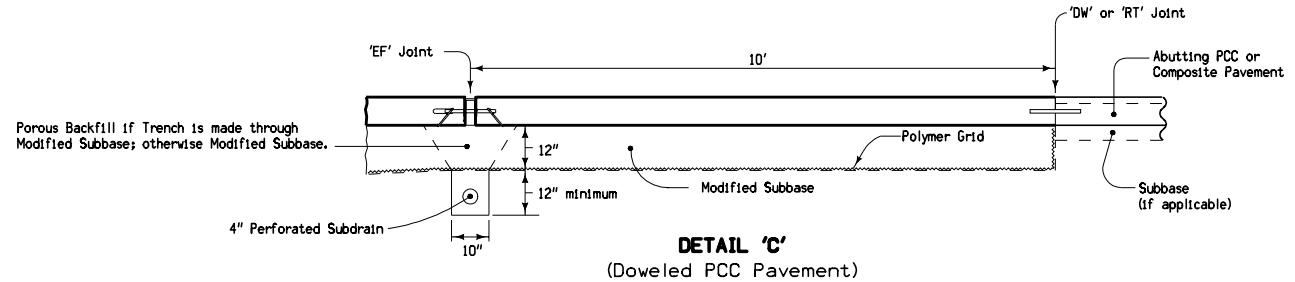
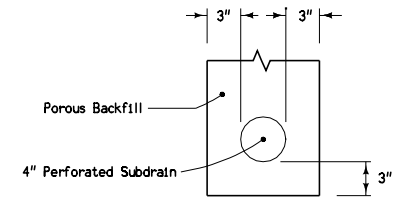
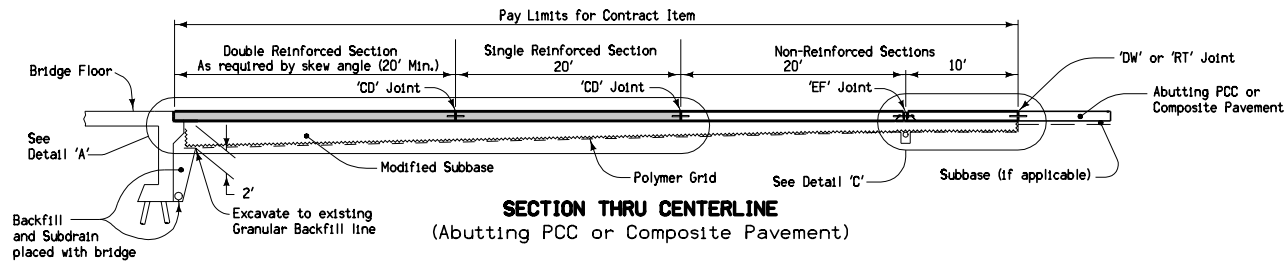
**RK-25**

SHEET 1 of 3

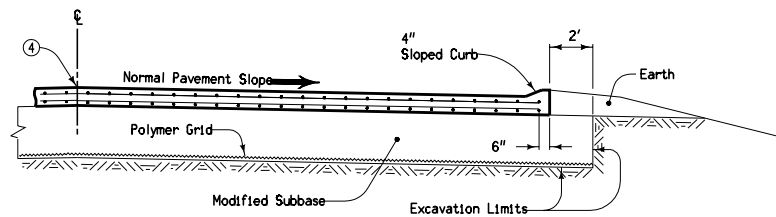
REVISIONS: Modified table text and corrected arrows on Sheet 1.

*Deanna Mayfield*  
APPROVED BY DESIGN METHODS ENGINEER

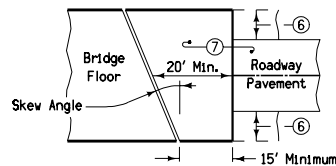
**DOUBLE REINFORCED 10" APPROACH**



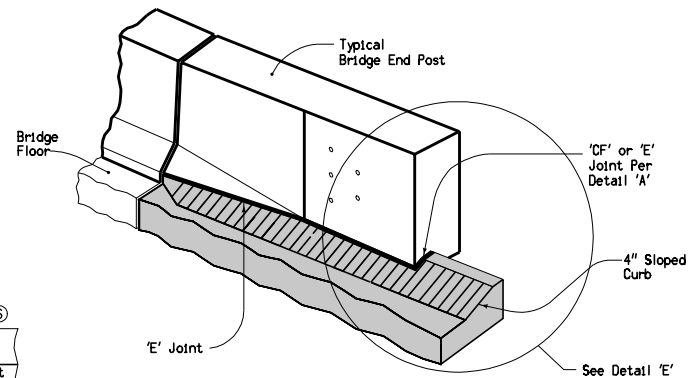
<p>Iowa Department of Transportation</p> <p><b>STANDARD ROAD PLAN</b></p> <p>REVISIONS: Modified table text and corrected arrows on Sheet 1.</p> <p><i>Deanna Masfeldt</i></p> <p>APPROVED BY DESIGN METHODS ENGINEER</p> <p><b>DOUBLE REINFORCED 10" APPROACH</b></p>	REVISION	
	2	10-16-07
	<b>RK-25</b>	
	SHEET 2 of 3	



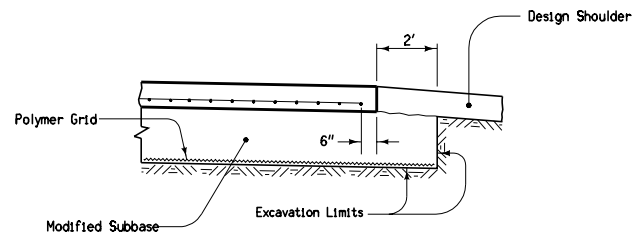
**SECTION A-A** <sup>(5)</sup>



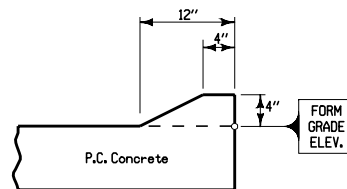
**APPROACH PAVEMENT  
LAYOUT AT A SKEW**



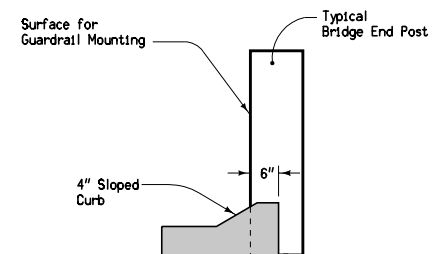
**DETAIL 'D'** <sup>(5)</sup>  
(Joint Placement)



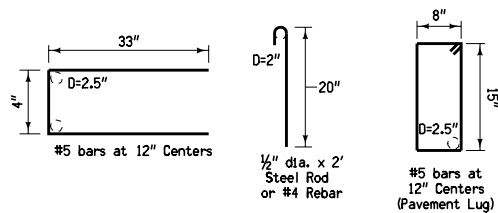
**SECTION B-B** <sup>(5)</sup>



**4" SLOPED CURB**




**DETAIL 'E'**  
(Back of Curb Placement)



**BENT BAR SHAPES**

- (4) Longitudinal Joint: (Standard Road Plan RH-51)  
Single pour — Saw cut joint per Detail B.  
Two pours — Use 'KS-2' Joint
- (5) See Standard Road Plan RK-21, RK-22, or RK-23.
- (6) Design shoulder width.
- (7) Reinforced bridge approach section.

 <b>Iowa Department of Transportation</b>  <b>STANDARD ROAD PLAN</b>	<b>REVISION</b>	
	<b>2</b>	<b>10-16-07</b>
	<b>RK-25</b>	
	<b>SHEET 3 of 3</b>	
<b>REVISIONS:</b> Modified table text and corrected arrows on Sheet 1.		
<i>Deanna Mayfield</i>		
<b>APPROVED BY DESIGN METHODS ENGINEER</b>		
 <b>DOUBLE REINFORCED 10" APPROACH</b>		