

TYPICAL BRIDGE APPROACH PLAN

Concrete used for the bridge approach section shall be the same as that used for remainder of project pavement.

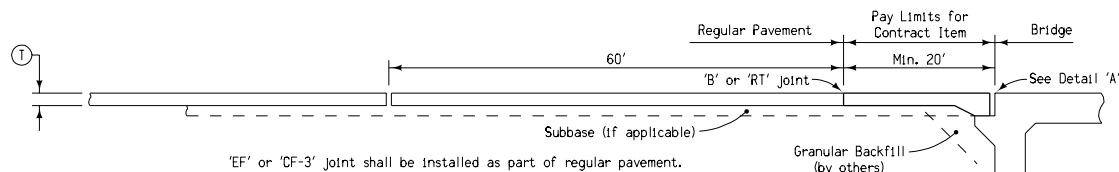
Contract item:

Bridge Approach, RK-18
Standard or Slip-Form PCC Pavement

Tabulation: 112-6

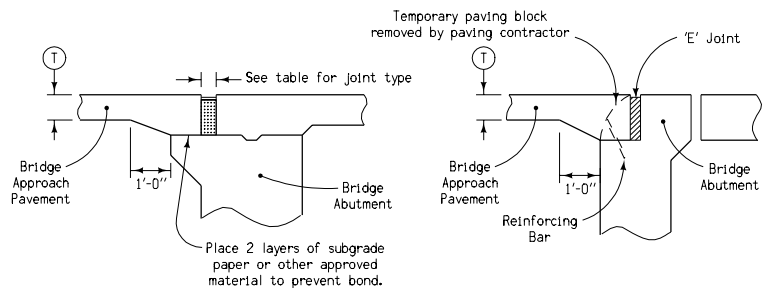
For joint details,
see Standard Road Plans
RH-50, RH-51, and RH-52.

Quantity for 20' long approach section for 24' pavement is 53.33 sq. yds. of "Bridge Approach."



SECTION A-A

JOINT TYPE FOR MOVABLE ABUTMENT BRIDGES		
Joint	Concrete Beam Maximum Bridge Length	Steel Girder Maximum Bridge Length
CF-1	370'	250'
CF-2	465'	320'
CF-3	575'	400'

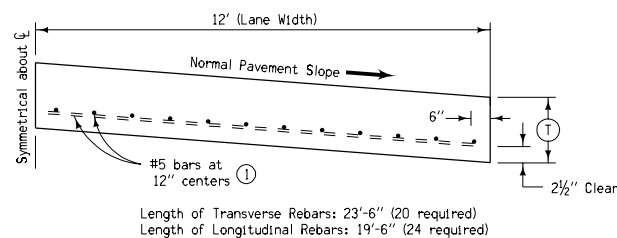


MOVABLE ABUTMENT BRIDGE

FIXED ABUTMENT BRIDGE

DETAIL 'A'

'T' is same thickness as is required for remainder of project pavement.



TYPICAL HALF SECTION B

① If bridge is skewed, place additional #5 bar parallel to skewed face.

STANDARD ROAD PLAN	RK-18
REVISION: Clarify longitudinal joint type.	REVISION NO. 7
APPROVED BY DESIGN METHODS ENGINEER	REVISION DATE 04-18-06

BRIDGE APPROACH DETAILS
(SECONDARY ROADS)