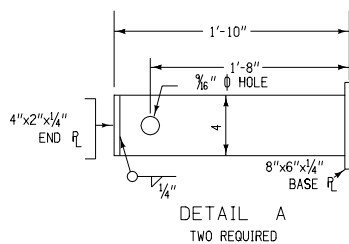
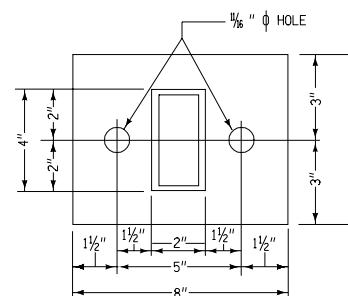


ELEVATION VIEW




NOTE:
BRACKET TO BE GALVANIZED
AFTER WELDING



BASE PLATE DETAIL

MILEPOST/BARRIER RAIL BRACKET

 Iowa Department of Transportation Highway Division	
STANDARD ROAD PLAN RD-62	
REVISION: NEW	REVISION NO. NEW
APPROVED BY: <i>William J. Allen</i> DESIGN/METHODS ENGINEER	REVISION DATE 04-15-03
MILEPOST BARRIER BRACKET	