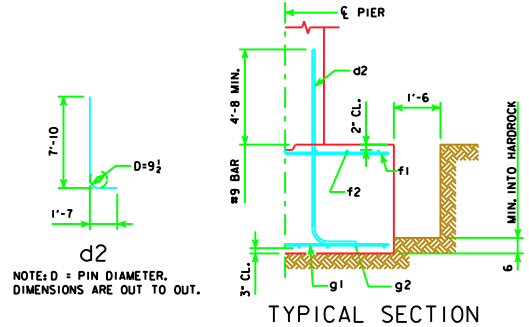
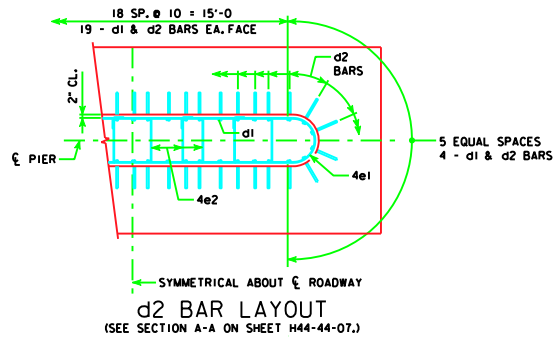
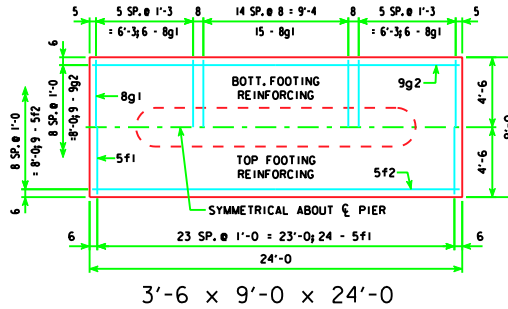
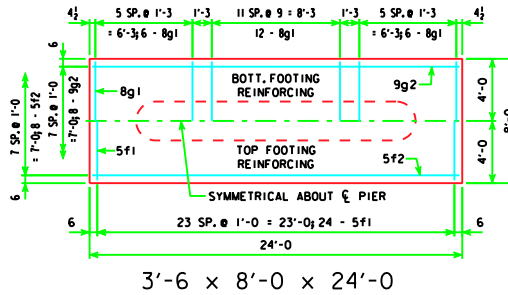
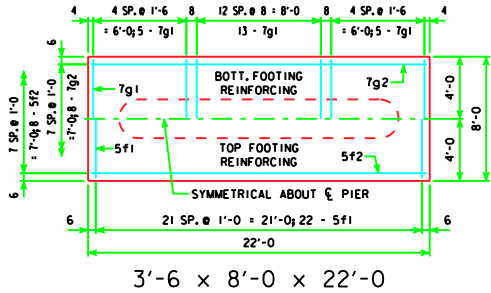


H IN ABUT. BRC.	FOOTING SIZE	REINFORCING STEEL (ONE FOOTING)				TOTAL WEIGHT (LB.)	STRUCTURAL CONCRETE (CY)
		BAR NO., SIZE & SPACING	LENGTH	WEIGHT (LB.)			
16 TO 18	3'-6" x 8' x 22'	d2 46 - #9 AS SHOWN	9'-5"	1473	2544	22.8	
		f1 22 - #5 @ 1'-0"	7'-8"	176			
		f2 8 - #5 @ 1'-0"	21'-8"	181			
	3'-6" x 8' x 24'	g1 23 - #7 AS SHOWN	7'-8"	360			
		g2 8 - #7 @ 1'-0"	21'-8"	354			
		d2 46 - #9 AS SHOWN	9'-5"	1473			
19 TO 21	3'-6" x 8' x 22'	f1 24 - #5 @ 1'-0"	7'-8"	192	2997	24.9	
		f2 8 - #5 @ 1'-0"	23'-8"	197			
		g1 24 - #8 AS SHOWN	7'-8"	491			
	3'-6" x 9' x 24'	g2 8 - #9 @ 1'-0"	23'-8"	644			
		d2 46 - #9 AS SHOWN	9'-5"	1473			
		f1 24 - #5 @ 1'-0"	8'-8"	217			
22 TO 24	3'-6" x 8' x 22'	f2 9 - #5 @ 1'-0"	23'-8"	222	3261	28.0	
		g1 27 - #8 AS SHOWN	8'-8"	625			
		g2 9 - #9 @ 1'-0"	23'-8"	724			
	3'-6" x 8' x 24'						
16 TO 18	3'-6" x 8' x 22'						
	3'-6" x 8' x 24'						



**FOOTING NOTES:**  
 THESE SPREAD FOOTINGS ARE DESIGNED AND DETAILED TO BE USED WITH THE CAP AND COLUMN DETAILS OF THE TEE PIERS AS SHOWN ON SHEET H44-44-07.  
 THESE SPREAD FOOTINGS SHALL EXTEND AT LEAST 6 INCHES INTO SUITABLE FOUNDATION ROCK AND THE LAST 6 INCHES OF ROCK EXCAVATION SHALL BE TO NEAT LINES OF MASONRY. THE FOUNDATION ROCK SHALL HAVE AN ALLOWABLE BEARING VALUE OF AT LEAST 5 TONS PER SQUARE FOOT.

LATEST REVISION DATE	<i>Thomas E. McQuinn</i> APPROVED BY BRIDGE ENGINEER	<b>Iowa Department of Transportation</b> <b>Highway Division</b>		
		STANDARD DESIGN - 44' ROADWAY, THREE SPAN BRIDGE <b>PRETENSIONED PRESTRESSED CONCRETE BEAM BRIDGES</b>		
		HL93 SUPERSTRUCTURE	MARCH, 2007	HS25 SUBSTRUCTURE
		TEE PIER - SPREAD FOOTINGS, H=16' TO 24' 0° SKEW		H44-48-07