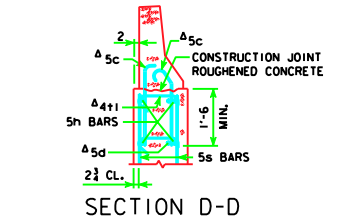
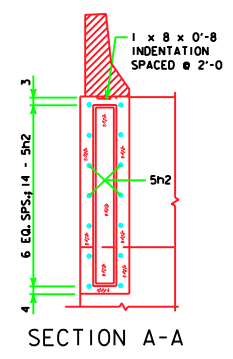
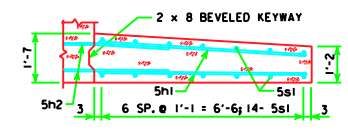


PART LONGITUDINAL SECTION NEAR GUTTER
(FOR DETAILS OF INTERMEDIATE DIAPHRAGM SEE SHEET H2451-30-05)

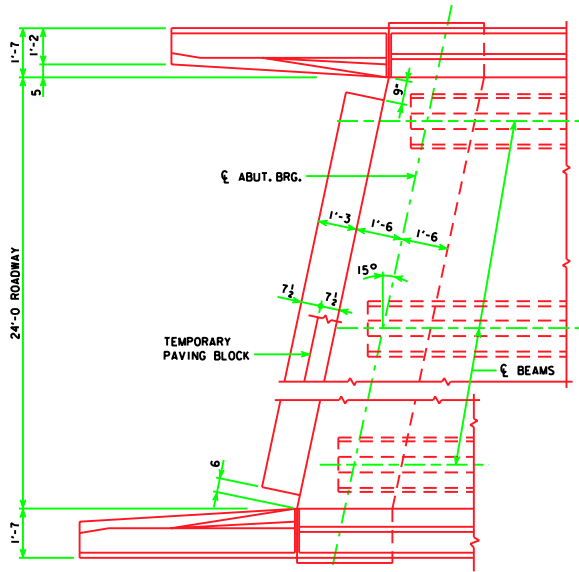
PART END VIEW AT ABUTMENT
NOTE: PROVIDE ELEVATIONS A AND B IN THE BRIDGE PLAN SHEETS



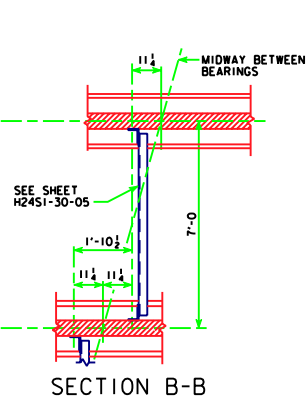
SECTION D-D
NOTE: SEE END SECTION DETAILS IN THESE PLANS FOR DETAILS OF BARRIER RAIL END SECTION AND SPACING FOR 5c BARRIER RAIL BARS. REINFORCING BARS 5c, 5d AND 4#1 ARE INCLUDED IN THE SUPERSTRUCTURE QUANTITIES.



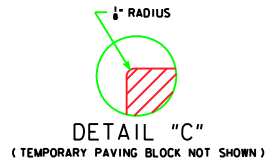
PART SECTION C-C



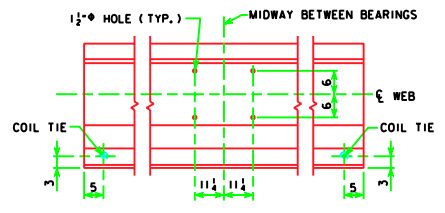
PART PLAN



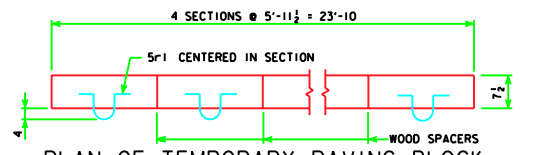
SECTION B-B



DETAIL "C"
(TEMPORARY PAVING BLOCK NOT SHOWN)



LOCATION OF BEAM COIL TIES AND STEEL DIAPHRAGM BOLT HOLES



PLAN OF TEMPORARY PAVING BLOCK
NOTE: LINE PAVING NOTCH WITH TARPAPER BEFORE PLACING THE TEMPORARY PAVING BLOCK.

LATEST REVISION DATE :	APPROVED BY <i>[Signature]</i>	STANDARD DESIGN - 24' ROADWAY, SINGLE SPAN BRIDGE	
		PRETENSIONED PRESTRESSED CONCRETE BEAM BRIDGES	
		JANUARY, 2005	HS20-44 LOADING
		IOWA DEPARTMENT OF TRANSPORTATION - HIGHWAY DIVISION	
		LONGITUDINAL SECTION	H2451-11-05
		15° SKEW A & B BEAMS	