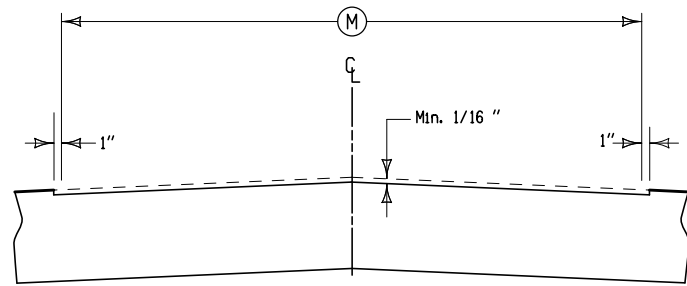
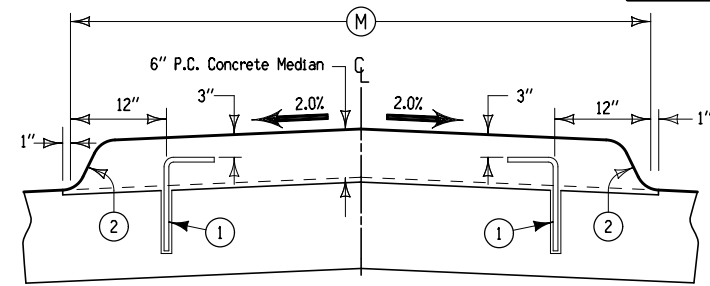


6149
04-17-07

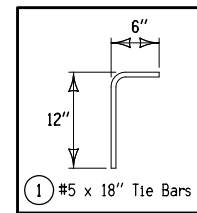


Details of Milling



Details of Median Placement

Notes:
 This section may be appropriately modified in areas specifically designated by the Engineer.
 Use 'C' joints in the doweled median and match the location of all transverse and longitudinal joints to the joints in the existing pavement.
 Place tie bars at 24" C-C longitudinal spacing between joints in existing pavement. Drill $\frac{3}{8}$ " holes for tie bars and epoxy to new pavement. See Tabulation 112-5 for additional details. Epoxy material shall be as specified in Materials IM491.11, appendix C.



① #5 x 18" Tie Bars

② 6" Standard Curb

**DOWELED MEDIAN
WITH STANDARD CURB**