

Curbs

6000

MISCELLANEOUS DETAILS WITH CURBS

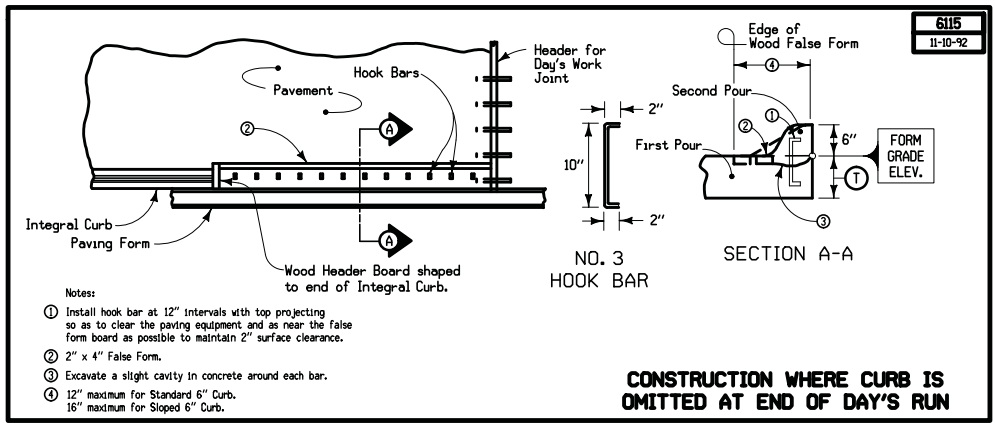
NO.	DATE	TITLE
6115	11-10-92	Construction Where Curb is Omitted at End of Day's Run
6123	10-02-01	Details of 6" Extruded Curb (HMA)
6133	04-15-14	P.C. Concrete Base with Standard Curb
6134	04-15-14	P.C. Concrete Base with Sloped Curb
6135	11-10-92	Raised Earth Median with Standard Curb
6136	11-10-92	Raised Earth Median with Sloped Curb
6137	11-10-92	Depressed Earth Median with Standard Curb
6138	10-27-98	Depressed Earth Median with Sloped Curb
6147	10-20-15	Transition Between Curbed and Non-Curbed Roadways

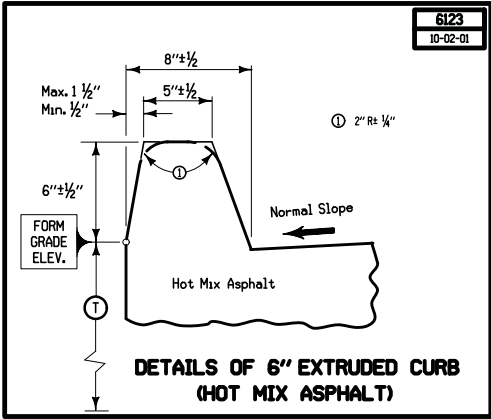
SECTION

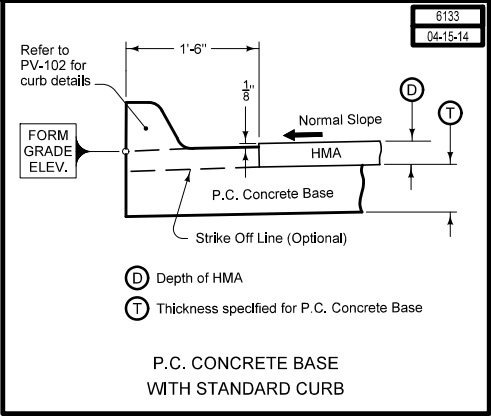
6100

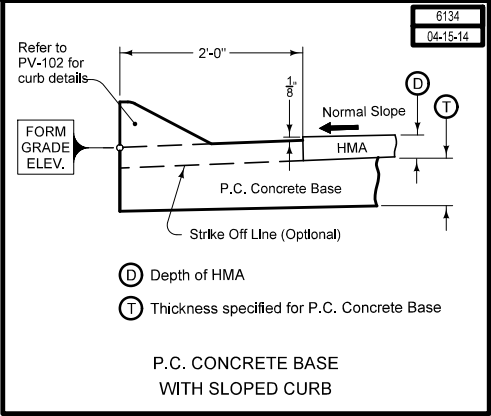
MISCELLANEOUS DETAILS WITH CURBS

NO.	DATE	TITLE
6148	11-10-92	Transition Between Standard Curbed and Sloped Curb on Shoulder
6149	04-17-07	Doweled Median with Standard Curb
6150	06-15-93	Doweled Median with Sloped Curb

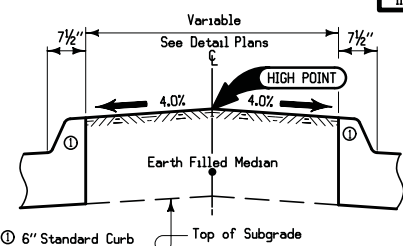






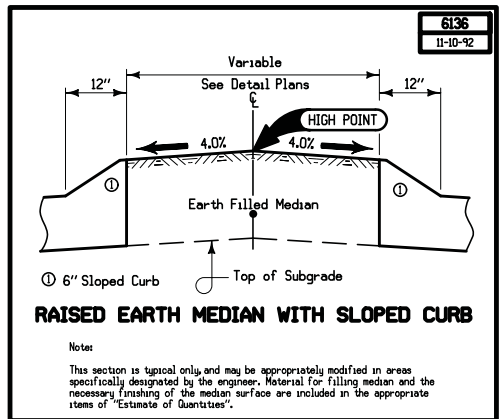


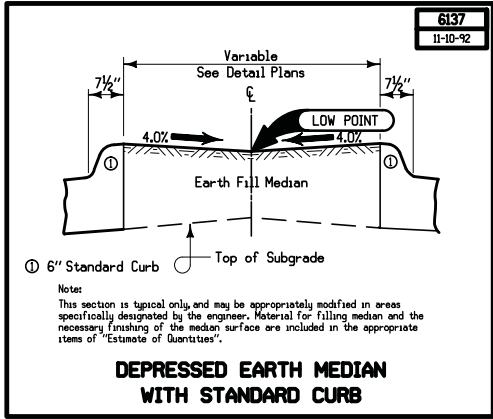
6135
II-10-92

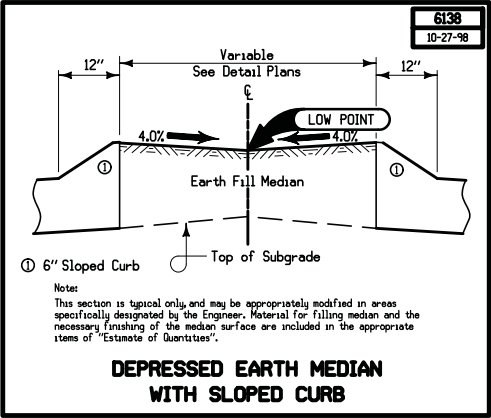


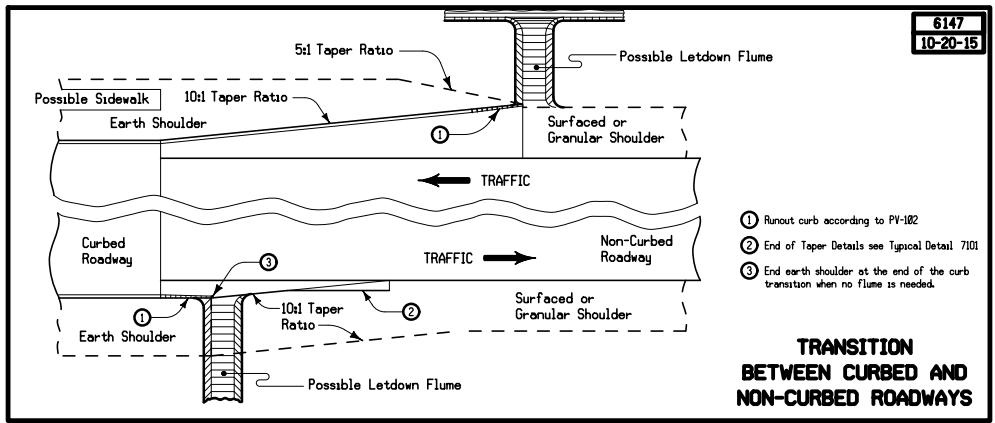
RAISED EARTH MEDIAN WITH STANDARD CURB

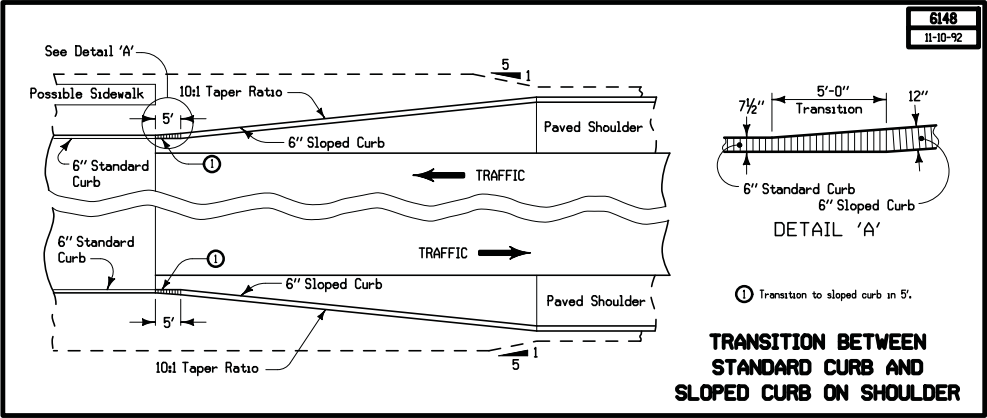
Notes:
This section is typical only and may be appropriately modified in areas specifically designated by the engineer. Material for filling median and the necessary finishing of the median surface are included in the appropriate items of "Estimate of Quantities".



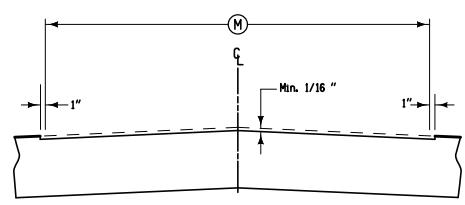




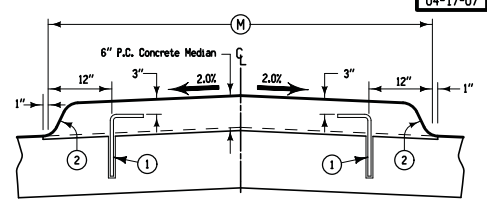




6149
04-17-07

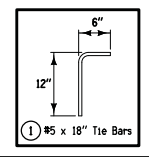


Details of Milling



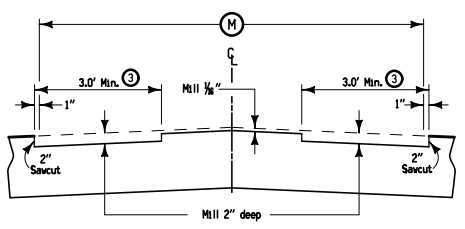
Details of Median Placement

Notes:
This section may be appropriately modified in areas specifically designated by the Engineer.
Use 'C' joints in the doweled median and match the location of all transverse and longitudinal joints to the joints in the existing pavement.
Place tie bars at 24" C-C longitudinal spacing between joints in existing pavement. Drill $\frac{3}{8}$ " holes for tie bars and epoxy to new pavement. See Tabulation 112-5 for additional details. Epoxy material shall be as specified in Materials IM491.11, appendix C.

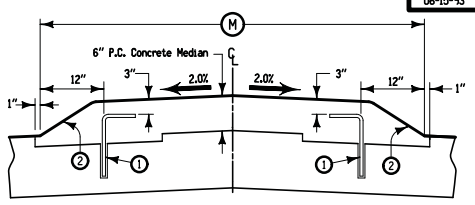


(2) 6" Standard Curb

DOWELED MEDIAN WITH STANDARD CURB

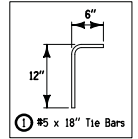


Details of Milling



Details of Median Placement

Notes:
 This section may be appropriately modified in areas specifically designated by the Engineer.
 Use 'C' joints in the doweled median and match the location of all transverse and longitudinal joints to the joints in the existing pavement.
 Place tie bars at 24" C-C longitudinal spacing between joints in existing pavement. Drill $\frac{3}{8}$ " holes for tie bars and epoxy to new pavement. See Tabulation 112-5 for additional details. Epoxy material shall be as specified in Materials 1M491.11, appendix C.



- ② 6" Sloped Curb
- ③ The contractor has the option to mill 2" across the total width of 'M'.

DOWELED MEDIAN WITH SLOPED CURB