

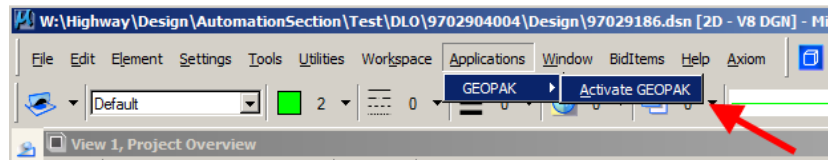
Drawing Contours

Design Manual
Chapter 40
Design Survey
Specifications

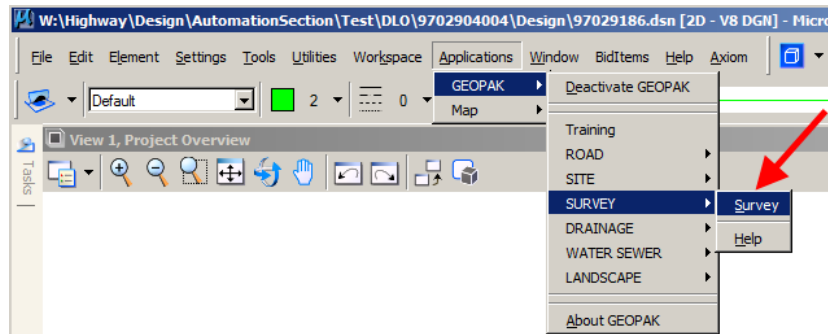
Originally Issued: 09-30-11

Geopak Survey Menu

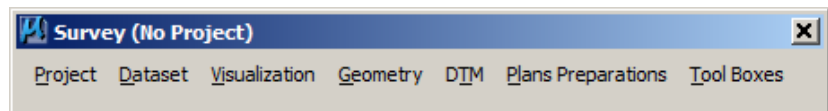
Start GEOPAK from the MicroStation menu by selecting **Applications > GEOPAK > Activate GEOPAK**, as shown at the right.



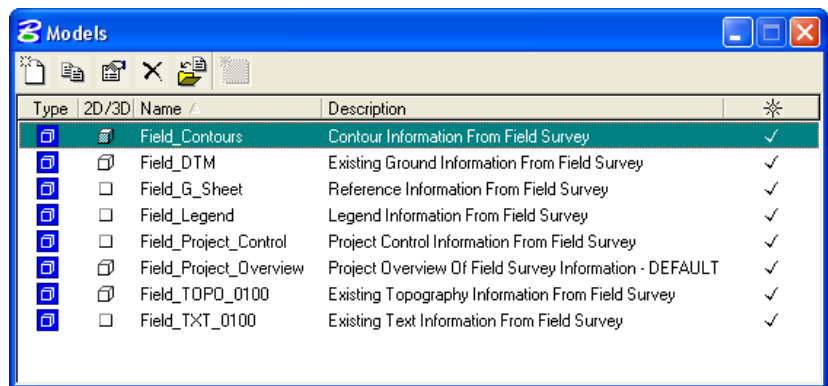
After GEOPAK has been activated, access the GEOPAK **Survey** menu from the MicroStation menu by selecting **Applications > GEOPAK > SURVEY > Survey**, as shown at the right.



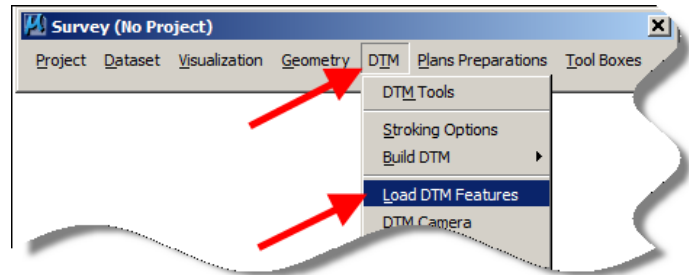
The **Survey** tool bar should display, as shown at the right.



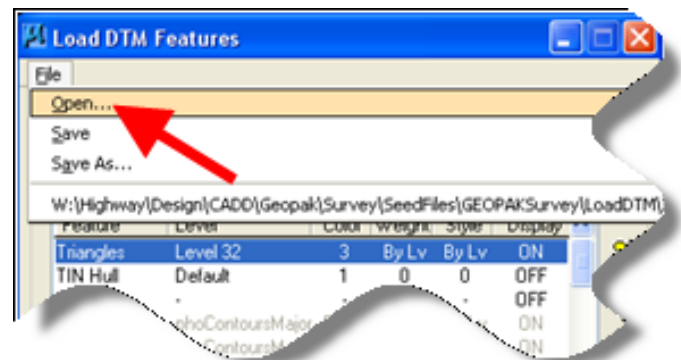
1.) Open the MicroStation Models dialog, as shown at the right, and *Double-click* on **Field_Contours** model name to open it.



2.) Select **DTM > Load DTM Features** on the **Survey** tool bar, as shown at the right. This will open the **Load DTM Features** dialog box, as shown below. This dialog will be used to draw the contours.



3.) On the **Load DTM Features** dialog box, select **File > Open**. This will open the **Open Preferences File** dialog, as shown below.

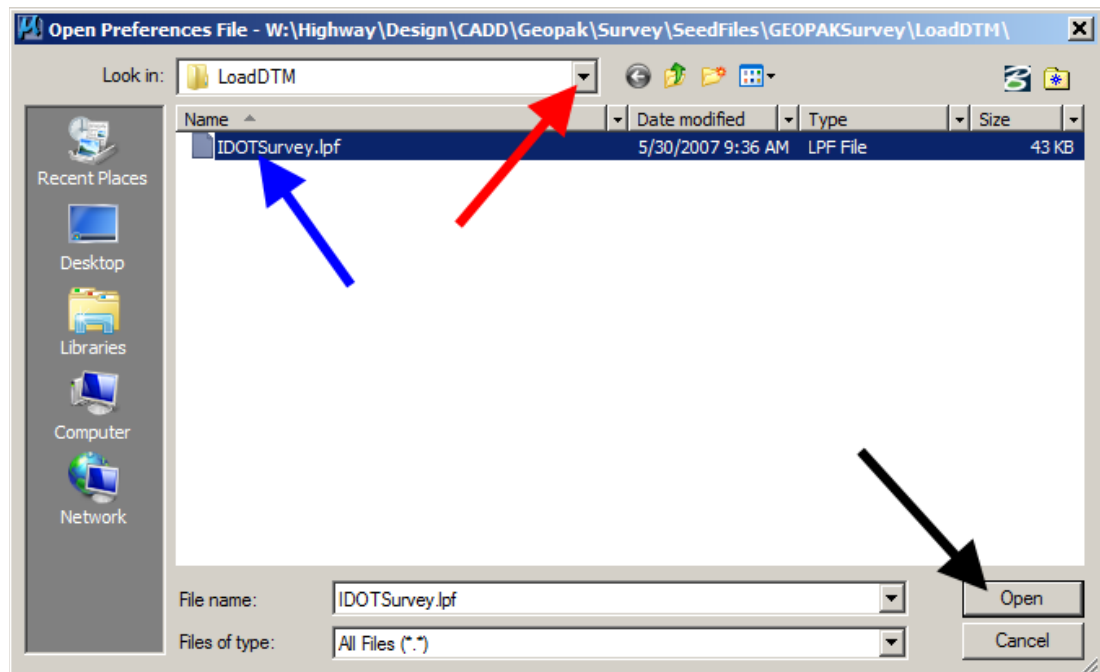


4.) On the **Open Preferences File** dialog, use the *drop-down* list arrow, as shown by the red arrow below, and navigate to the following folder:

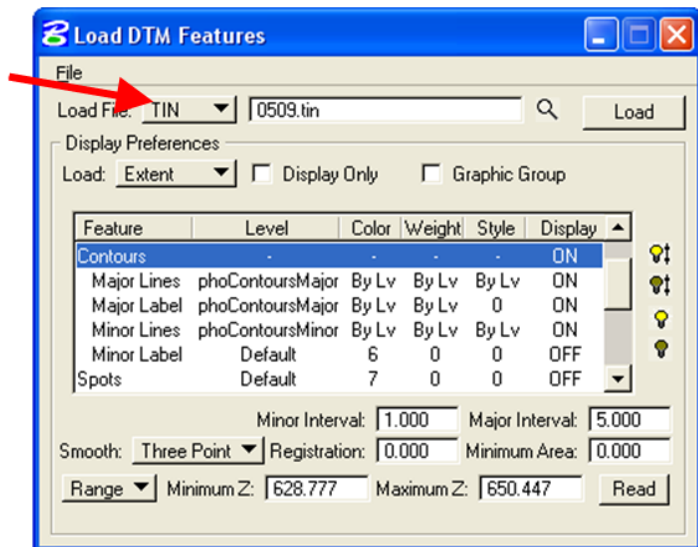
W:\Highway\Design\CADD\Geopak\Survey\SeedFiles\GEOPAKSurvey\LoadDTM

The **IDOTSurvey.lpf** file should be at this location, blue arrow. This file sets all of the correct attributes for items to be drawn.

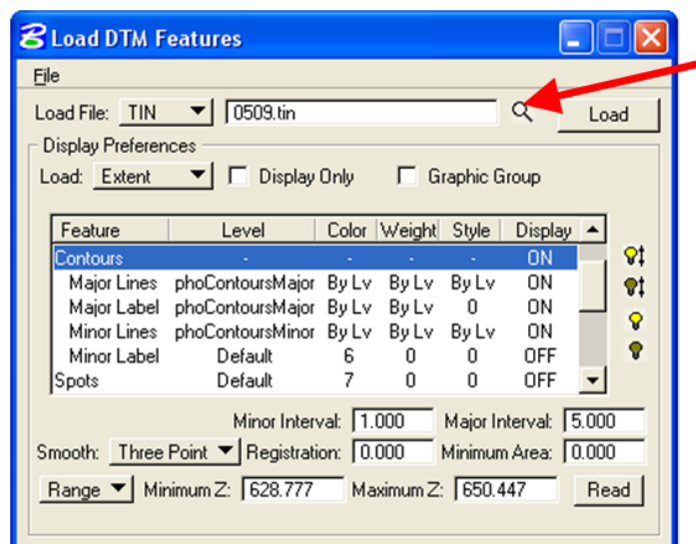
Double-click the **IDOTSurvey.lpf** file to open it, or select (highlight) the file name and *click* the **OK** button, shown by the black arrow.



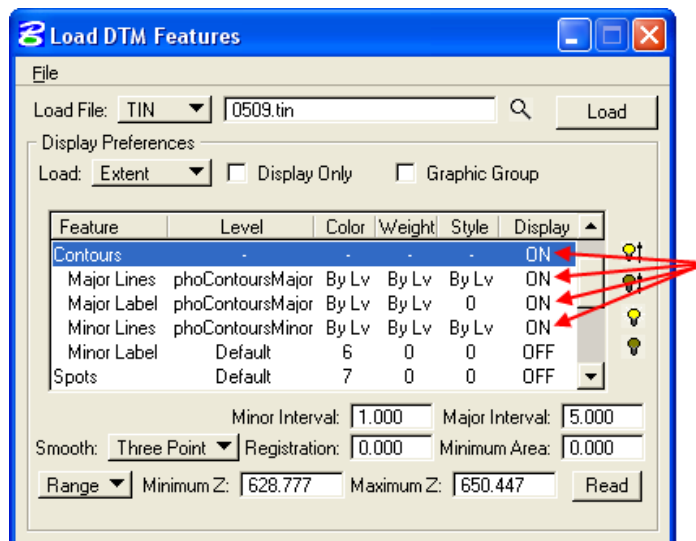
6.) Make sure that the **Load File** option is set to **TIN**, as shown at the right.



7.) Check that the correct TIN file has been selected. If not, *click* the **Magnifying Glass** browse button (🔍), as shown at the right. Navigate to the correct location and select the correct file.

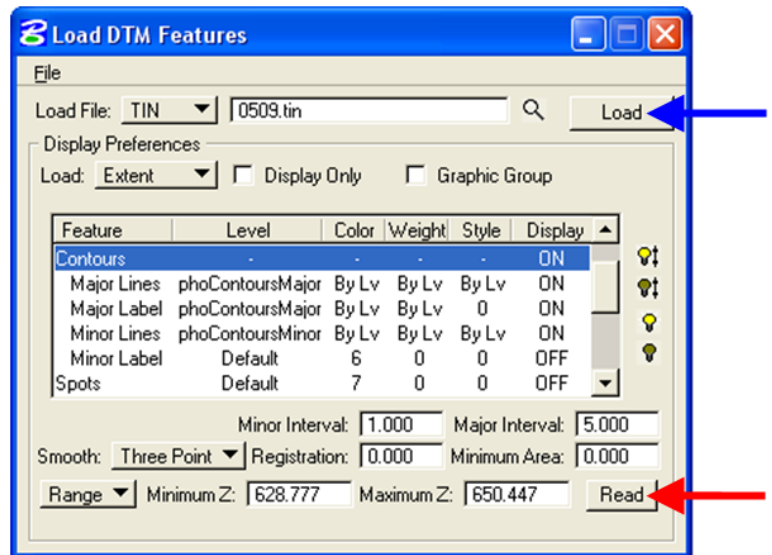


8.) The **Contours** feature and the three features directly below **Contours**, located by the arrows at the right, should have the **Display** attribute toggled **ON**. The **Display** attribute for all other **Features** should be **OFF**, including the **Minor Label** under **Contours**, which is not used. To toggle the **ON/OFF Display** attribute for a feature, *select* (highlight) the desired **Feature** row and *Click* the correct On or OFF “light bulb” (💡 or 🔌) icon.

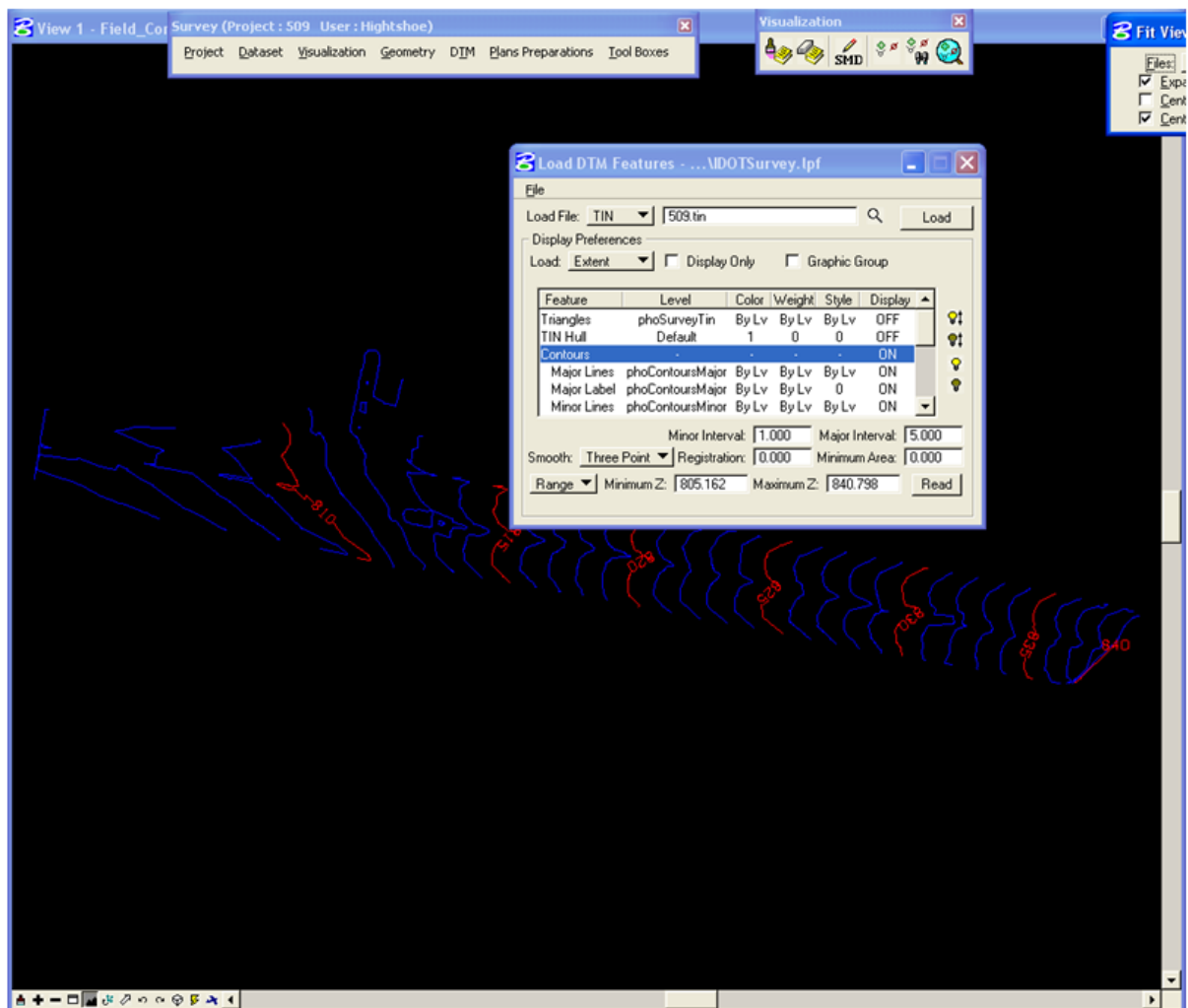


9.) You must *click* the **Read** button, shown by the red arrow, so that GEOPAK can figure the Minimum Z and Maximum Z.

Click the **Load** button, shown by the blue arrow, to draw the contours into the file.



10.) The **Field_Contours** model should now contain contours similar to the picture below.



Chronology of Changes to Design Manual Section:

040d-011 Drawing Contours

9/30/2011	NEW
	New