

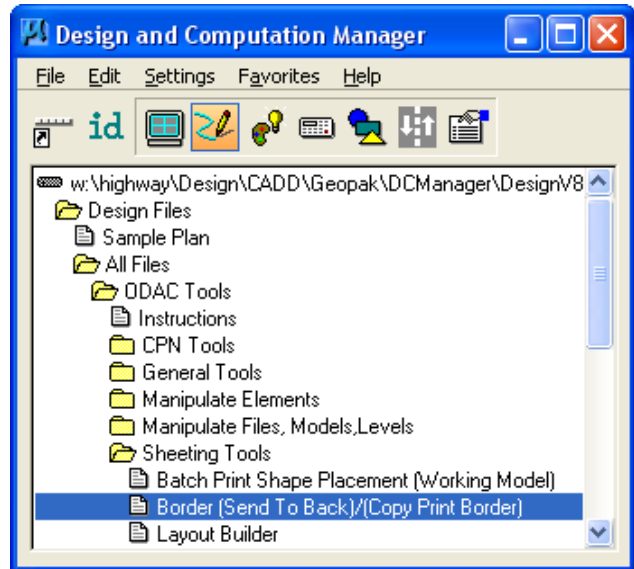
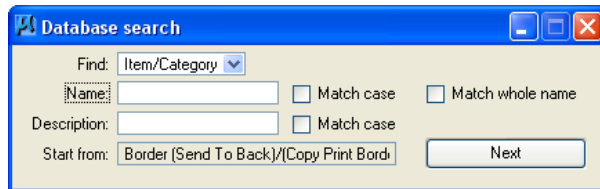
Border, Send to back and Copy Print Border

Design Manual
Chapter 21
Automation Tools
Instructions

Originally Issued: 03-31-09
Revised: 05-29-09

This tool can be accessed from the Geopak: D&C Manager, as shown at the right:

(If the item is not found as shown, use the *D&C > Edit > Find* tool to locate it, as shown below.)

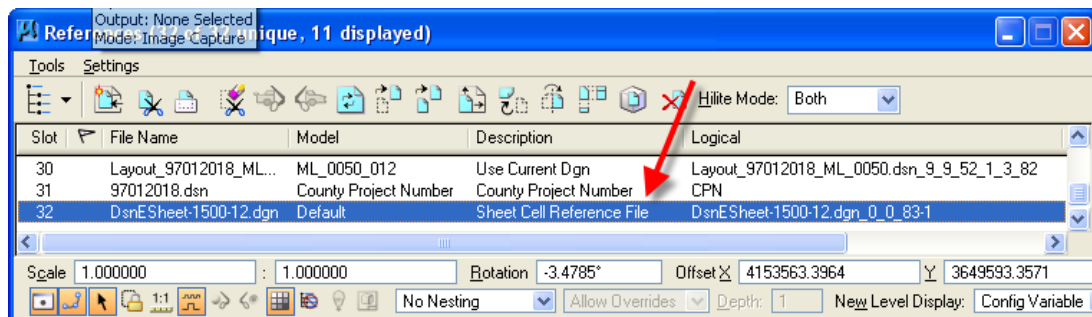


Border (Send to Back)/(Copy Print Border)

This program does three things:

1. Change the border file reference update sequence (to first place)

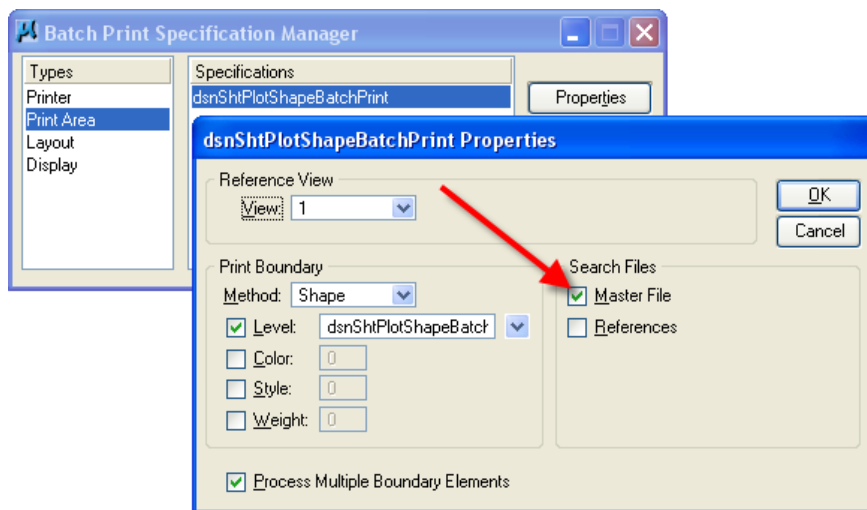
The reference update sequence, (for the plan sheet border attachment), will be changed so the border file updates first. This will cause the border file gray scale grid lines to display first, and therefore appear “under” the profile design elements. The program will locate and manipulate the reference attachment with the reference **Description** of “**Sheet Cell Reference File**”, as shown below. The Geopak sheeting process automatically assigns this **Description** to the border reference file attachment. The **Description** of “**Sheet Cell Reference File**” must not be changed or the program will not correctly locate and manipulate the reference file attachment.



The program will automatically open every model in the file and move the border file reference attachment to the “back” of the reference file attachment list. When complete, the “**Sequence Updated ... Done! ...**” dialog will display, (not shown).

2. Copy the blue Plot Border to the active file

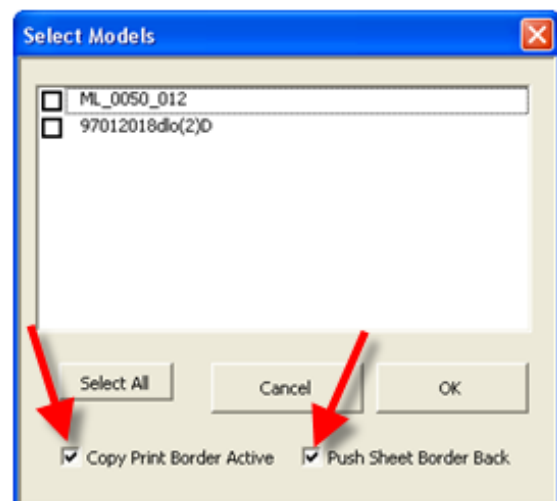
The “**Send to Back...**” program also copies the referenced blue “print border” to the active “Sheet” file. This is similar to how the **Batch Print Shape Placement** program copies the blue “print borders” to the Working model in a file containing multiple sheets, (such as A’s, B’s, C’s). When the blue “print border” is active, the single “sheet file” models and the multiple sheet models can be plotted in the same way. The **Search File – Master file** check-box will now be *checked*, () , for all file types, (as shown below). If the “**Send to Back...**” is unintentionally run a second time, the program will delete the first copy of the blue “print border”, prior to creating a new copy. This should eliminate the possibility of the **Batch Print** program finding two borders for the same sheet.



The “Send to Back” tool now has two *check-box* options, () , as shown to the right. You can choose whether to

- Copy the Print Border Active,**
- and whether to
- Push the Sheet Border Back.**

The above two settings will be ON by default.



3. Change the Design Model Reference Update Sequence (to last place)

The last thing the “**Send to Back...**” program does is to change the **Design** model **Reference Update Sequence** to be last, so all **Design** elements appear to be on top of everything else.