



Text Labeler

Design Manual
Chapter 21
Automation Tools
Instructions

Originally Issued: 02-10-12

This tool can be accessed from the GEOPAK D&C Manager, as shown at the right, and as listed below:

Design Files >

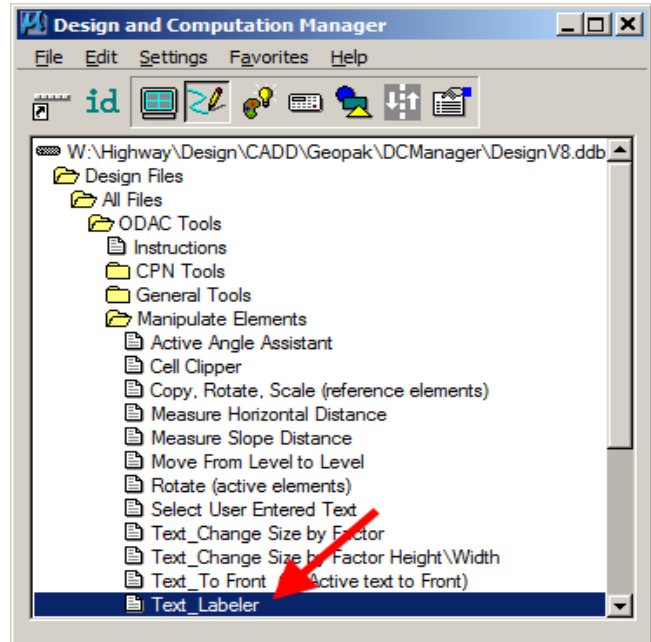
All Files >

ODAC Tools >

Manipulate elements >

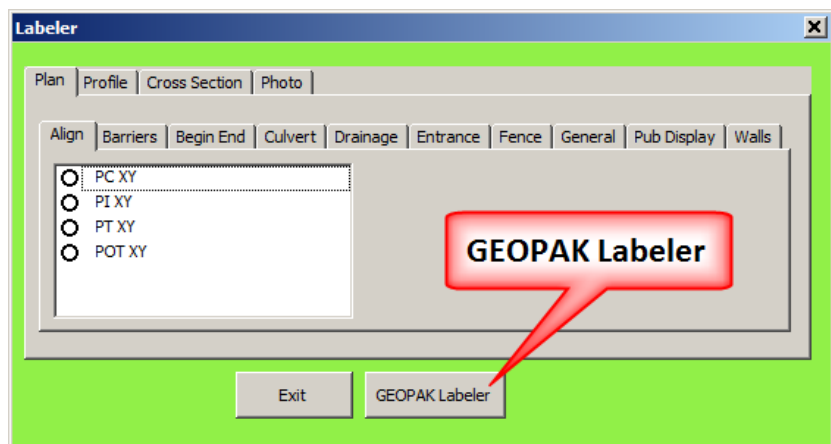
Text Labeler

(If the item is not found as shown, use the D&C > Edit > Find tool to locate it.)



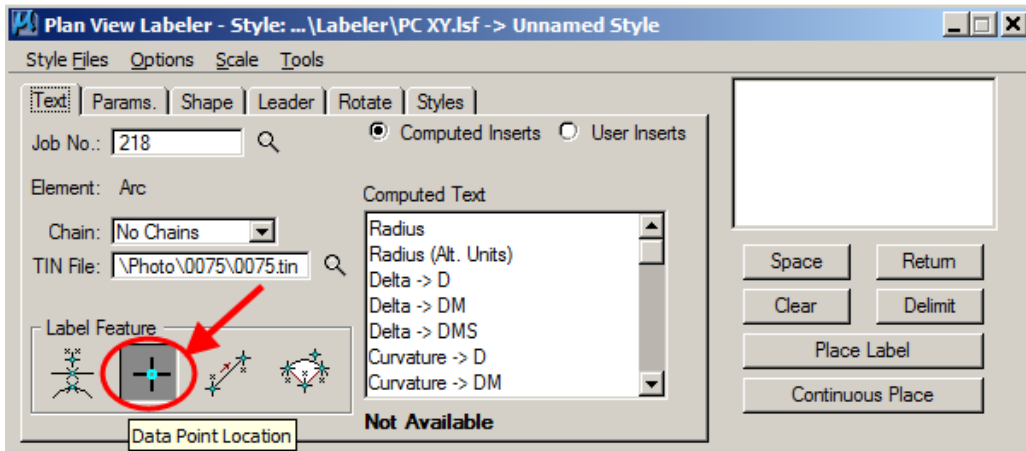
Labels utilizing the GEOPAK “Plan, Profile, and Cross Section Labeler” tool will cause the Labeler dialog to have a background color of green, and the GOEPAK Labeler button will display, as shown at the right.

When the text label option requires only the MicroStation Text Placement tool, the background color will change to tan and the GEOPAK Labeler button will change to Place Label, as shown later in this document.



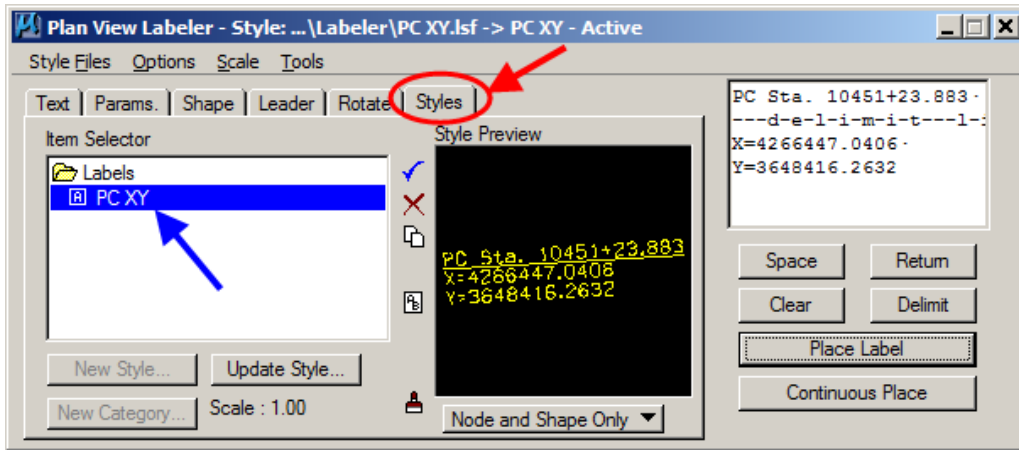
As shown above, the Labeler dialog has two rows of option tabs and the white area usually containing several text options for each tab. Make a selection and click the “GEOPAK Labeler” button. This will attach the appropriate “Styles File” in the GEOPAK Plan View Labeler dialog, as shown below.

After *clicking* the **GEOPAK Labeler** button, (shown above), the **Plan View Labeler** dialog will be active, as shown below.



Select the Label Feature, (typically the **“Data Point Location”**, located by the arrow above), and place a data point in the file to set the location to be calculated.

Click the “Styles” tab, (located below by the red arrow).

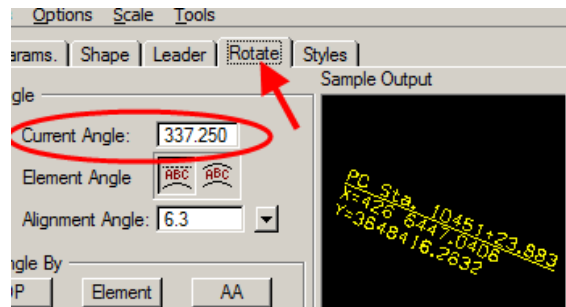


Double-click the **Label**, (located by the blue arrow, above), to populate the display window at the top right of the dialog. If necessary, the **Label** text can be modified in the display window, prior to placement.

Note: Confirm that the “Computed inserts” (X,Y in this example) are updating correctly based on your **Data Point Location** from the previous step.

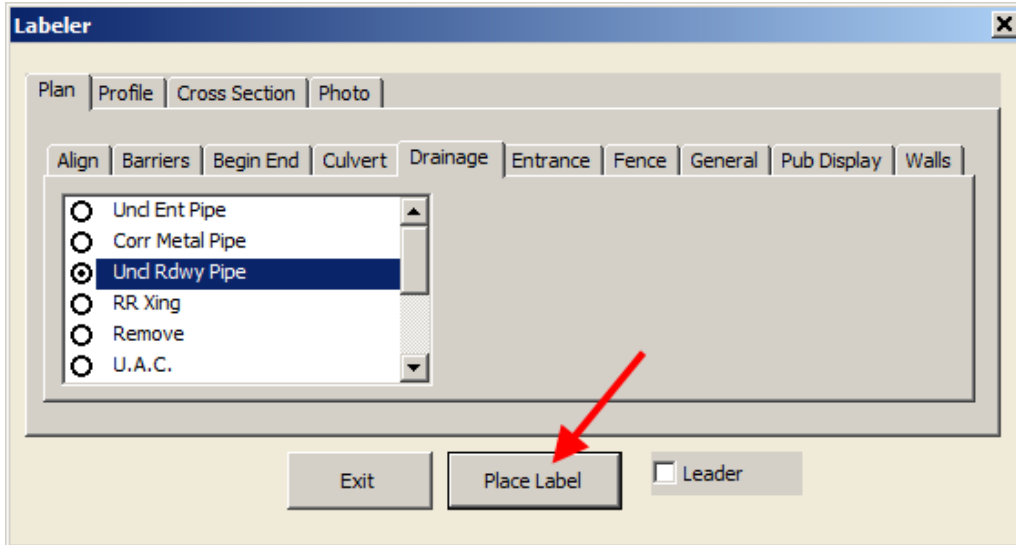
When the label is ready for placement, *click* the **“Place Label”** button and data point the location in your file.

Also note the **Current Angle** located under the **Rotate** tab, as shown at the right. This angle may possibly stay the same from one text placement procedure to the next, and may need to be changed manually to obtain the desired text placement results.

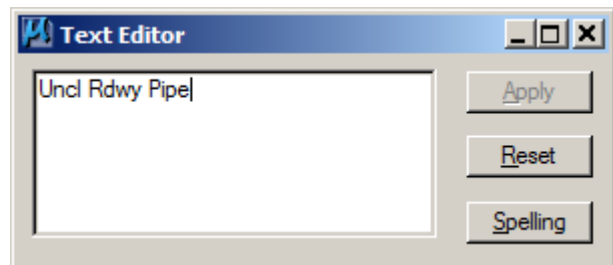


When the **Labeler** dialog background is green, not all label options will calculate coordinates or a station value, but all will utilize a **Style**, as listed in the **Plan View Labeler** dialog.

Tabs that create the tan background do NOT produce “calculated labels” and simply utilize the MicroStation **Place Text** command, and are placed with the active MicroStation text settings, e.g., size, weight, color, level, and angle.



After making a text selection, *click* the **Place Label** button, which should cause the MicroStation **Text Editor** dialog to display. After confirming that all text attributes are set correctly for the situation, place a data point in the file for the text location.



Right-click (reset) to release the text from the on-screen cursor and to end the command, or *click* the **Reset** button on the **Text Editor** dialog.

For additions to this tool please contact ODAC with your suggestion(s).

Chronology of Changes to Design Manual Section:

021A-053 Text Labeler

2/10/2012	NEW
	New