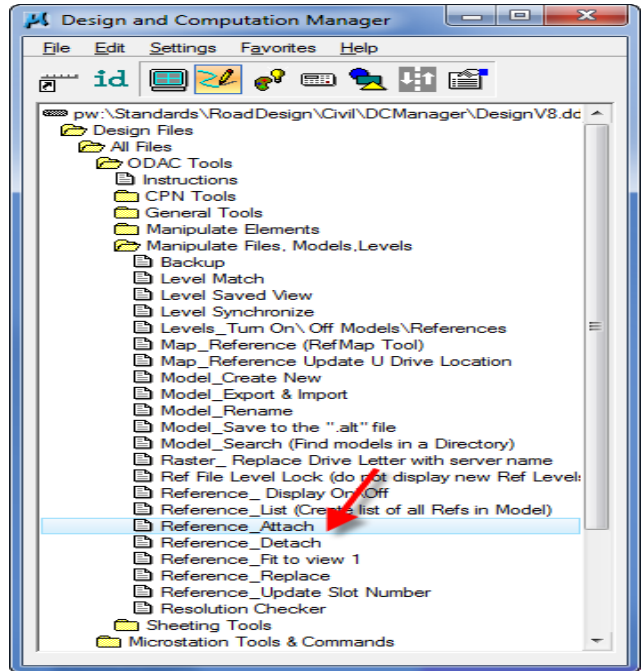


Reference Attach

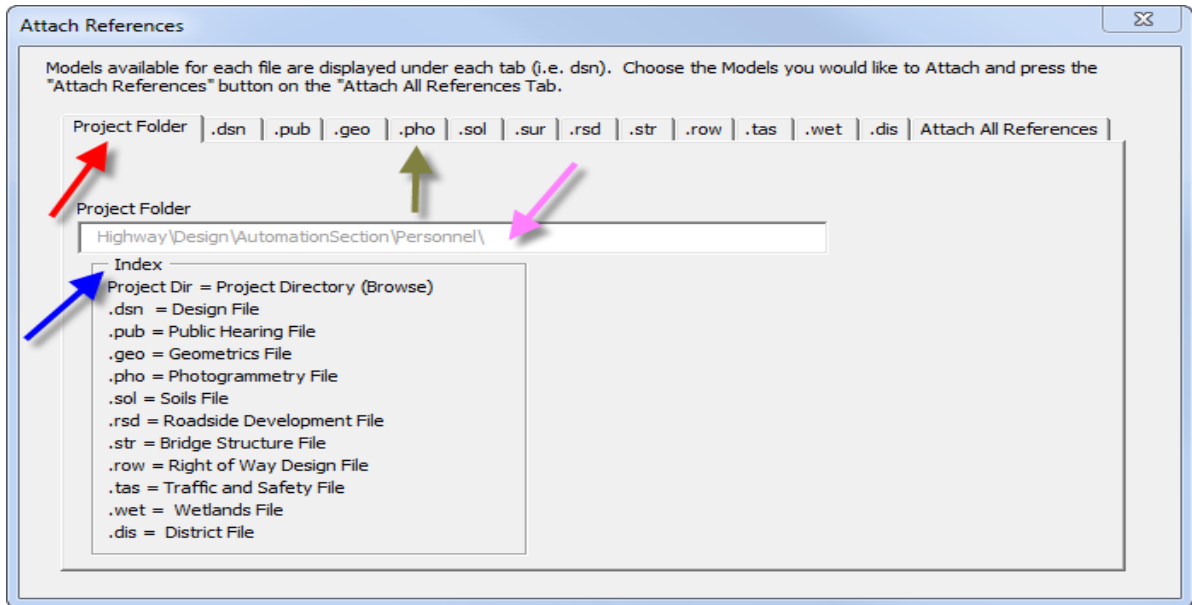
Design Manual
Chapter 21
Chapter Automation
 Originally Issued: 12-31-08
 Revised: 10-13-14

This tool can be accessed from the Geopak: D&C Manager, as shown on the right. If the item is not found as shown on the right, use the *D&C > Edit > Find* tool to locate it.

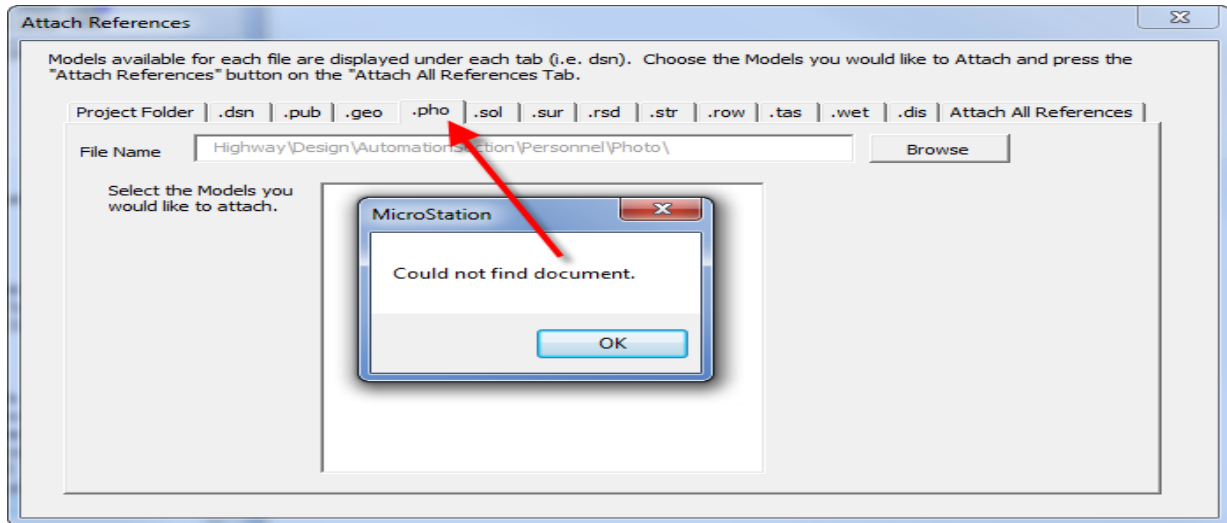


Double-clicking the **Reference_Attach** tool will display the **Attach References** dialog, shown below. This program is designed to attach reference files to the active model or to all models within the active design file.

The **Project Dir** tab (red arrow below) displays the current project directory (pink arrow) and an ideal file extension **Index** listing (blue arrow). The **Index** listing also provides a brief explanation of the project files represented by each of the "file tabs" (green Arrow).

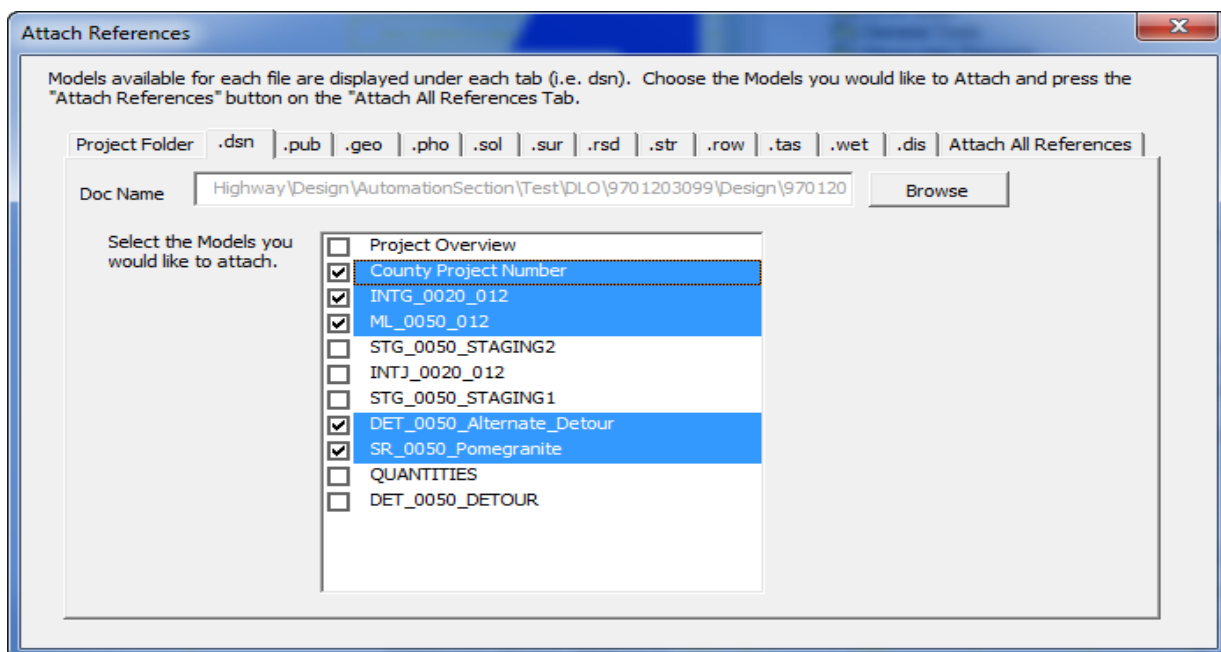


When a file tab is *clicked*, if a file is found with the expected file name and extension, the full path location of the file will be displayed. If a file is not found, the **File Name** field will display **File Not Found**. Use the **Browse** button to the right!!



The logic of this program is based on the assumption there will be only one file within the Project Directory with the extension on the file tab shown above. When a file is located, you must confirm that the file listed in the **File Name** display is the correct file. The program locates (and uses) only the first existence of any file with the correct extension in the appropriate folder. If it is the wrong file, or if no file is located, use the **Browse** button to locate the correct file.

The **Browse** button allows the selection of any file. The models present within the selected file will be displayed in the large **Select the Models you would like to search** display field. The selection of one file location does not affect the path locations of any other file tabs. *Clicking* on any file tab causes the program to search the appropriate project subfolder for a file with the appropriate matching file name and the file extension shown on the file tab. If the file with the specific extension is located, the program will display the list of models available in that file. Any of the available models may then be selected (checked,) to become references, as shown below.

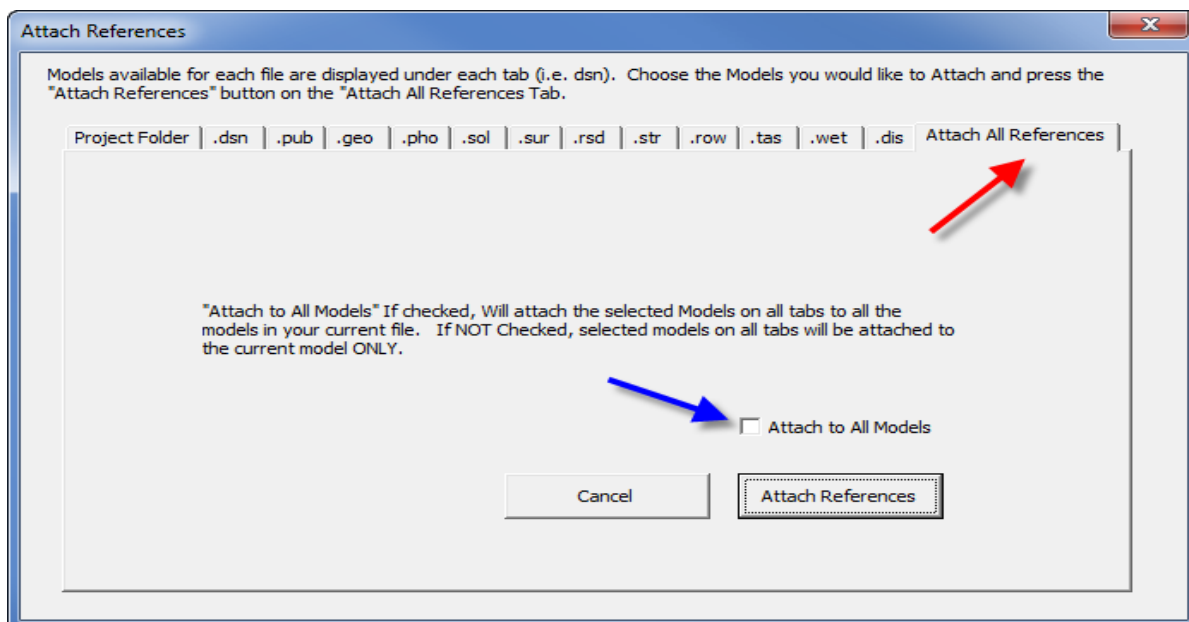


When a file extension tab is selected, the program will search only the anticipated normal Project Directory subfolder for the file, as listed below.

Project Folder

BRPrelim	.str
Design	.dsn, .pub
GEO	.geo
OLE	.wet
PHOTO	.pho
SURVEY	.sur
ROW	.row
Roadside	.rsd
Soils	.sol
TrafEng	.tas

The **Attach All References** tab displays the dialog shown below. If the **Attach to All Models** checkbox is checked, () the program will open all models within the active file and attach the models that are checked on each file tab. If the **Attach to All Models** checkbox is NOT checked () the program will attach the references to only the current active model.



The **Attach References** button activates the process that will attach all selected models to all appropriate locations.

The **Cancel** button will end the program without attaching any references.

Chronology of Changes to Design Manual Section:

021A-050 Reference Attach

10/13/2014 Revised
Revised images to reflect ProjectWise migration.

6/30/2011 Revised
General rewrite.

4/30/2009 NEW
Previously Updated.