

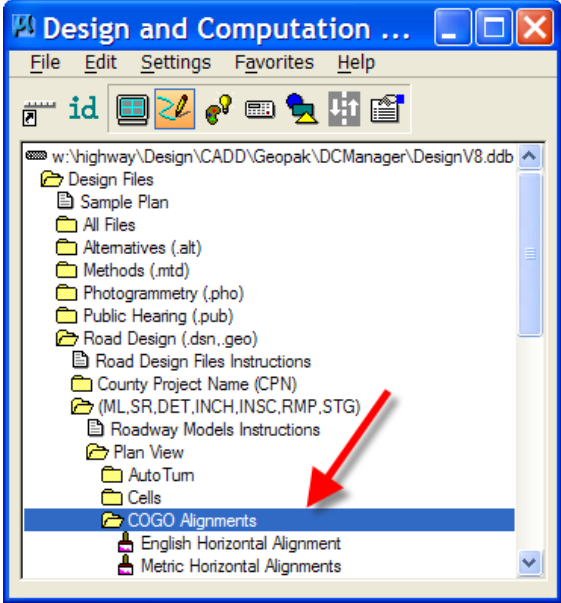
COGO Alignments, Plan View

Design Manual
Chapter 21
Automation Tools
Instructions

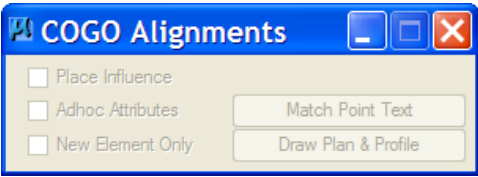
Originally Issued: 09-20-10

This tool can be accessed from the Geopak: D&C Manager, as shown at the right.

(If the item is not found as shown, use the *D&C > Edit > Find* tool to locate it.)

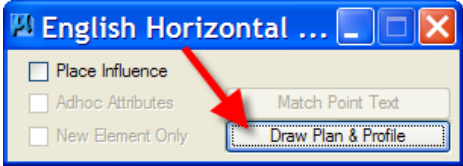


After *double-clicking* the **COGO Alignments** item, the **COGO Alignments** dialog, for Horizontal Alignments, will display, as shown below.

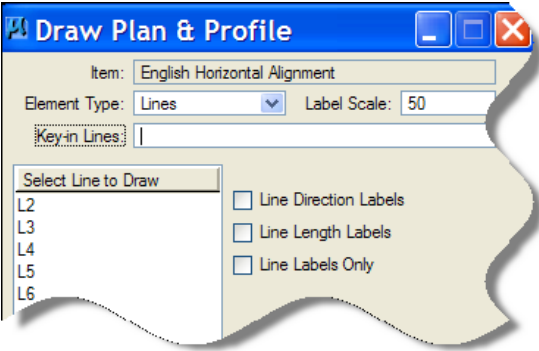
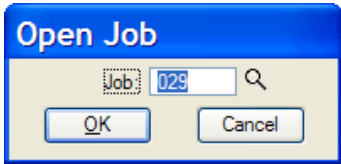


Double-clicking either the “**English...**” or the “**Metric Horizontal Alignment**” tool, (shown above), will run a program that will determine the resolution and scale of the open model, to be used later to populate the **Geopak Label Scale** field on the **Draw Plan & Profile** dialog.

Double-clicking either of the two above listed tools will also activate the “**Draw Plan and Profile**” button on the **Horizontal Alignment** dialog, as shown by the arrow at the right.

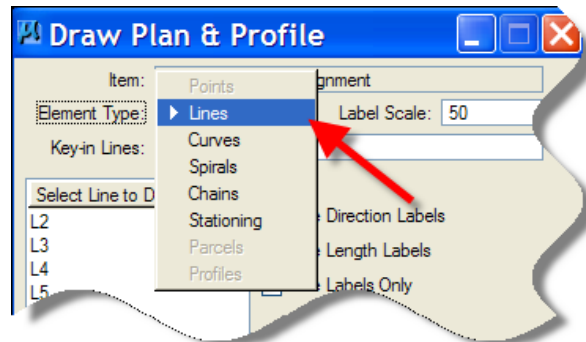


Clicking the “**Draw Plan & Profile**” button will activate the “**Open Job**” dialog, shown at the right. Select the appropriate “gpk” file, (**job**), and *click* the **OK** button. This will produce the **Draw Plan & Profile** dialog, shown below.



The **Element Type** drop-down list, shown at the right, provides the options for:

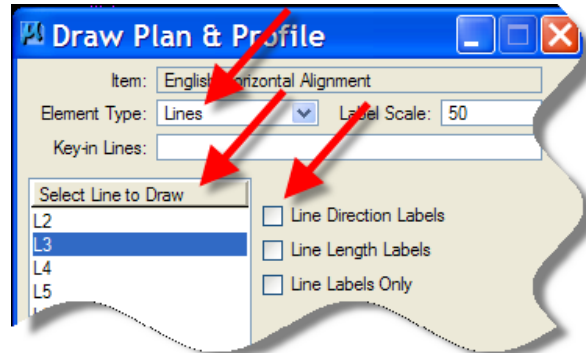
Lines,
Curves,
Spirals,
Chains,
Stationing, and more.



The **“Lines” Element Type** provides the three options listed below and shown at the right.

Line Direction Labels,
Line Length Labels, and
Line Labels Only

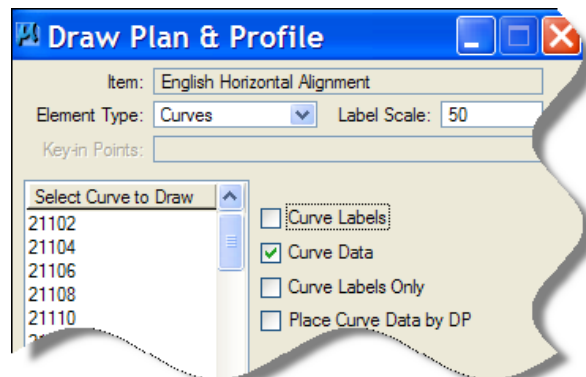
Any or all of the options can be selected. A **“Line”** must also be selected from the **“Select Line to Draw”** list, if any are available.



If the **“Curves” Element Type** is selected, the options change as listed below, and as shown at the right.

Curve labels
Curve Data
Curve Labels Only
Place Curve Data by DP

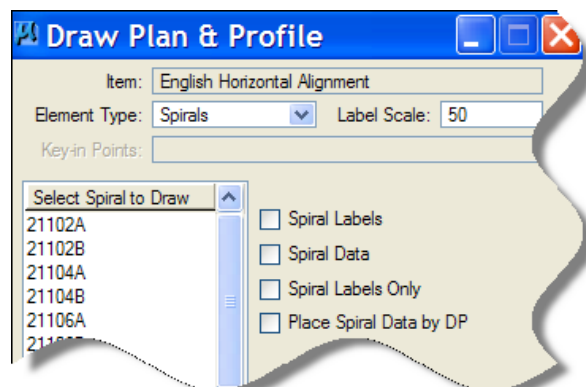
As mentioned above for **Lines**, a **“Curve”** must also be selected from the **“Select Curve to Draw”** list.



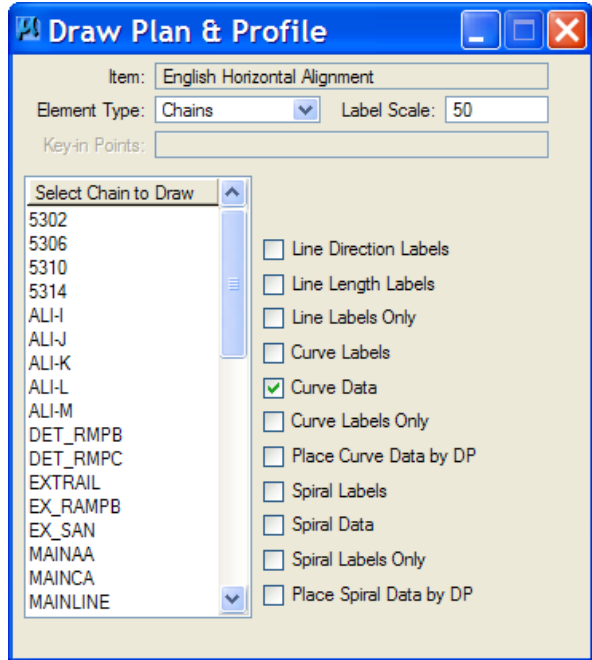
Selecting the **“Spirals” Element Type** produces the following option list:

Spiral Labels
Spiral Data
Spiral Labels Only
Place Spiral Data by DP

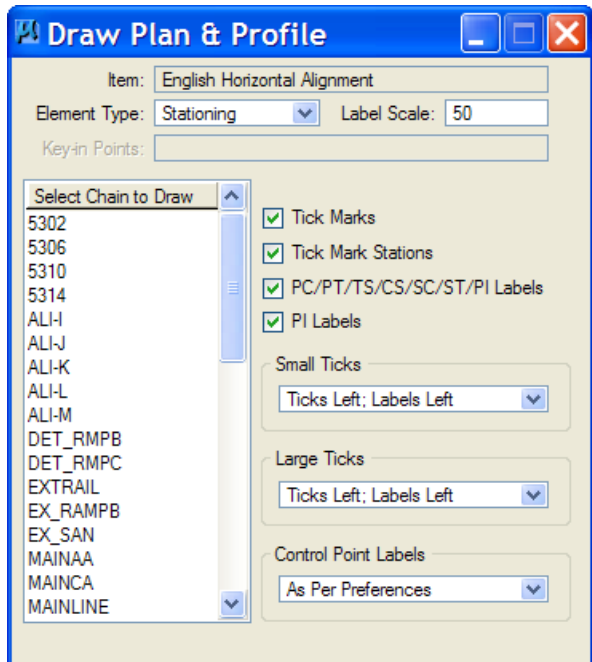
As mentioned above for the other **Element Types**, a **Spiral** name must also be selected from the list.



The “**Chains**” **Element Type** produces a longer list of options, as shown at the right.



The options available when the “**Stationing**” **Element Type** is selected, are shown below.



The *drop-down* lists under both the **Large** and **Small Ticks** items provide several additional options, as listed and shown below.

- Ticks Left; Labels Left**
- Ticks Right; Labels Right**
- Ticks Both; Labels Left**
- Ticks Both; Labels Right**

There are also additional options under the **Control Point Labels** item, as listed and shown below.

- As Per Preferences**
- Force Left**
- Force Right**

In all the examples above, the desired *check-box* options should be checked (☑) before selecting the “**Line, Curve, Spiral, Chain, or Stationing** item to **Draw**” from the list. The process will begin immediately after an item is selected.

