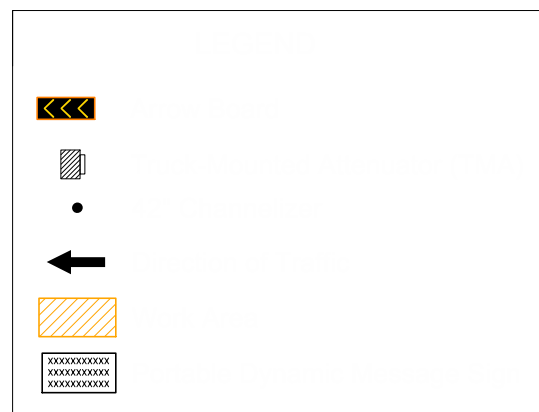


SPEED LIMIT (mph)*	Roll Ahead Distance (R)			
	9900 to 22,000 lbs. GVW		Over 22,000 lbs. GVW	
	Stationary	Moving 15 mph Max	Stationary	Moving 15 mph Max
50 or greater	200'	240'	160'	200'

* Speed Limit refers to regulatory speed limit before road work.

- ① Arrow boards are optional
- ② Shadow vehicle 1 may be omitted when the shoulder is too narrow to drive on
- ③ Arrow board optional unless shadow vehicle 1 is omitted
- ④ Arrow board optional unless shadow vehicle 4 is omitted
- ⑤ Channelizing devices may be omitted for stops not exceeding 15 minutes
- ⑥ Truck-mounted or mini PDMS may be used in lieu of a full-sized PDMS
- ⑦ Audible warning system recommended
- ⑧ Audible warning system recommended if optional shadow vehicles 2 and 4 are omitted

Possible Contract Item:
Traffic Control



For lane closures longer than one hour at a location, use TC-422.

On roadways with 3 lanes in each direction, close the left lane and the center lane to avoid conflicts with right side ramps. Lane closure pairings should be adjusted to fit site conditions.

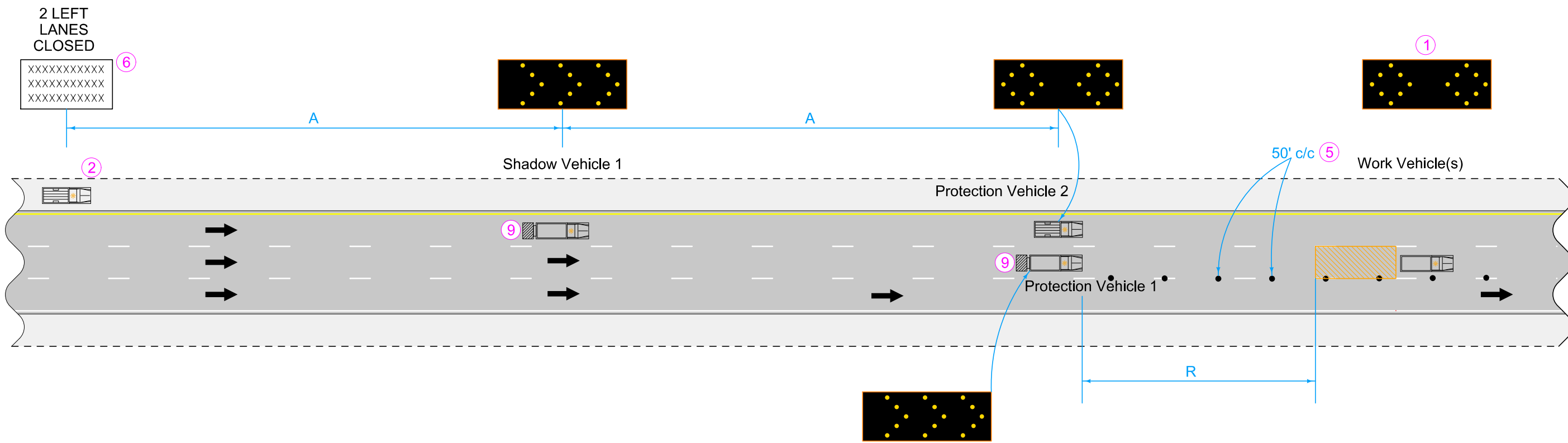
On roadways with four lanes in each direction, close the left and left center lanes together and the right and right center lanes together.

Consider ramps closures when closing lanes adjacent to ramps.

	REVISION	
	1	4-18-23
STANDARD ROAD PLAN		TC-435
REVISIONS: Added speed limit note.		SHEET 1 of 2

APPROVED BY DESIGN METHODS ENGINEER

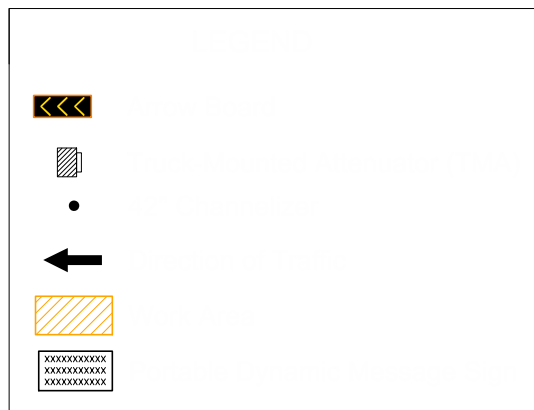
**MULTI-LANE CLOSURE
FOR MOBILE OPERATION
50 mph or greater**



SPEED LIMIT (mph)*	Vehicle Spacing A	Roll Ahead Distance (R)			
		9900 to 22,000 lbs. GVW		Over 22,000 lbs. GVW	
		Stationary	Moving 15 mph Max	Stationary	Moving 15 mph Max
25-40	250'	100'	100'	75'	100'
45	500'	125'	175'	100'	150'

* Speed Limit refers to regulatory speed limit before road work.

Possible Contract Item:
Traffic Control



For lane closures longer than one hour at a location, use TC-422.

On roadways with 3 lanes in each direction, close the left lane and the center lane to avoid conflicts with right side ramps. Lane closure pairings should be adjusted to fit site conditions.

On roadways with four lanes in each direction, close the left and left center lanes together and the right and right center lanes together.

- ① Arrow boards are optional
- ② Shadow vehicle 1 may be omitted when the shoulder is too narrow to drive on
- ⑤ Channelizing devices may be omitted for stops not exceeding 15 minutes
- ⑥ Truck-mounted or mini PDMS may be used in lieu of a full-sized PDMS
- ⑨ TMA are optional for speeds of 30 mph or less

	REVISION	
	1	4-18-23
STANDARD ROAD PLAN	TC-435	
	SHEET 2 of 2	
REVISIONS: Added speed limit note.		
 APPROVED BY DESIGN METHODS ENGINEER		
MULTI-LANE CLOSURE FOR MOBILE OPERATION 45 mph or less		