

SIGN PLACEMENT ON  
TYPE III BARRICADES





Typical Sign Placement



Sign Placement with  
Supplemental Sign

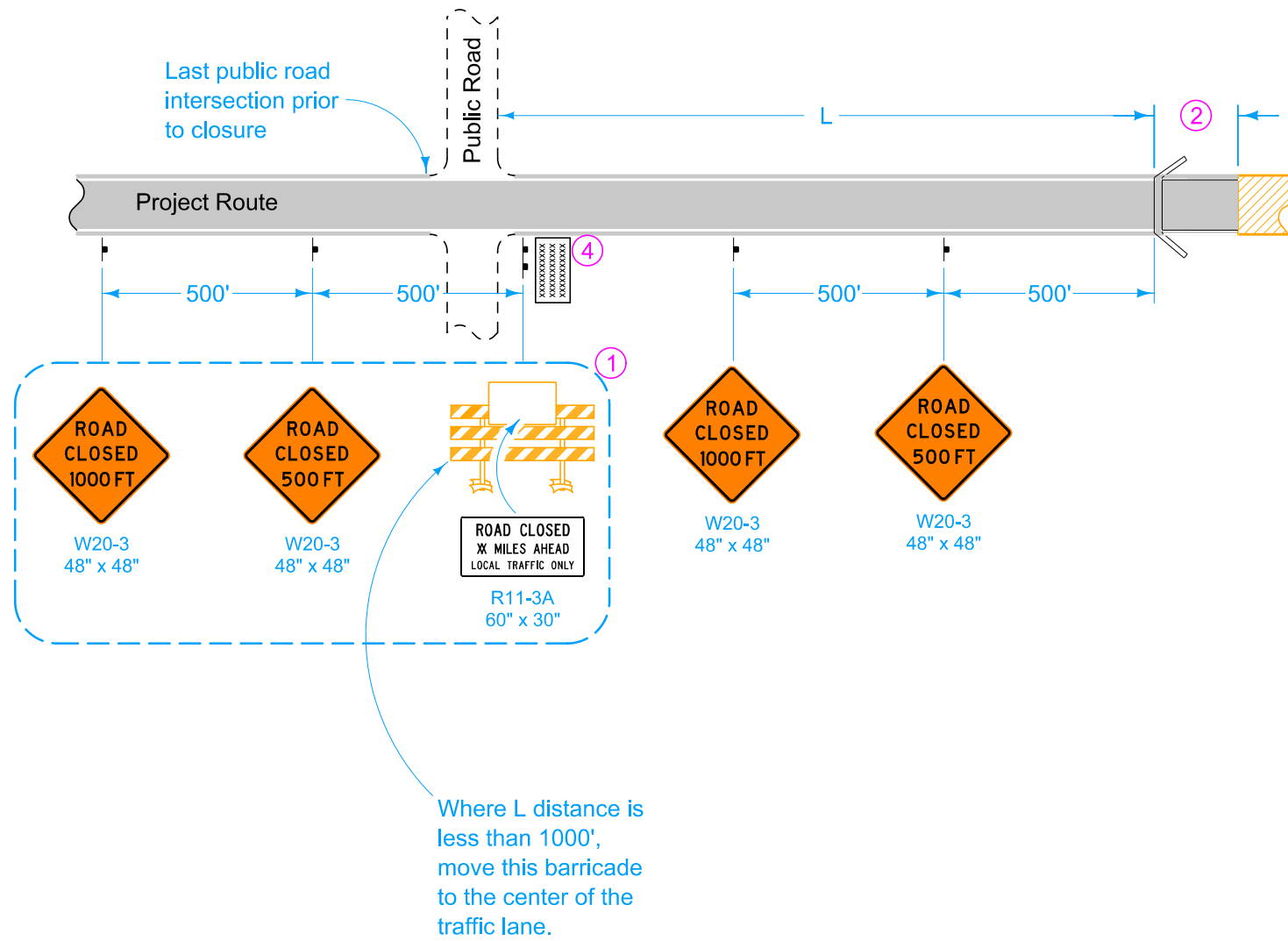
Possible Contract Items:  
Traffic Control  
Safety Closures  
Portable Dynamic Message Sign

Possible Tabulation:  
108-13A

	REVISION	
	6	04-21-20
<b>STANDARD ROAD PLAN</b>	<b>TC-252</b>	
	SHEET 1 of 3	
REVISIONS: Added Portable Dynamic Message Sign and new note 4 on Sheet 2.		
 APPROVED BY DESIGN METHODS ENGINEER		

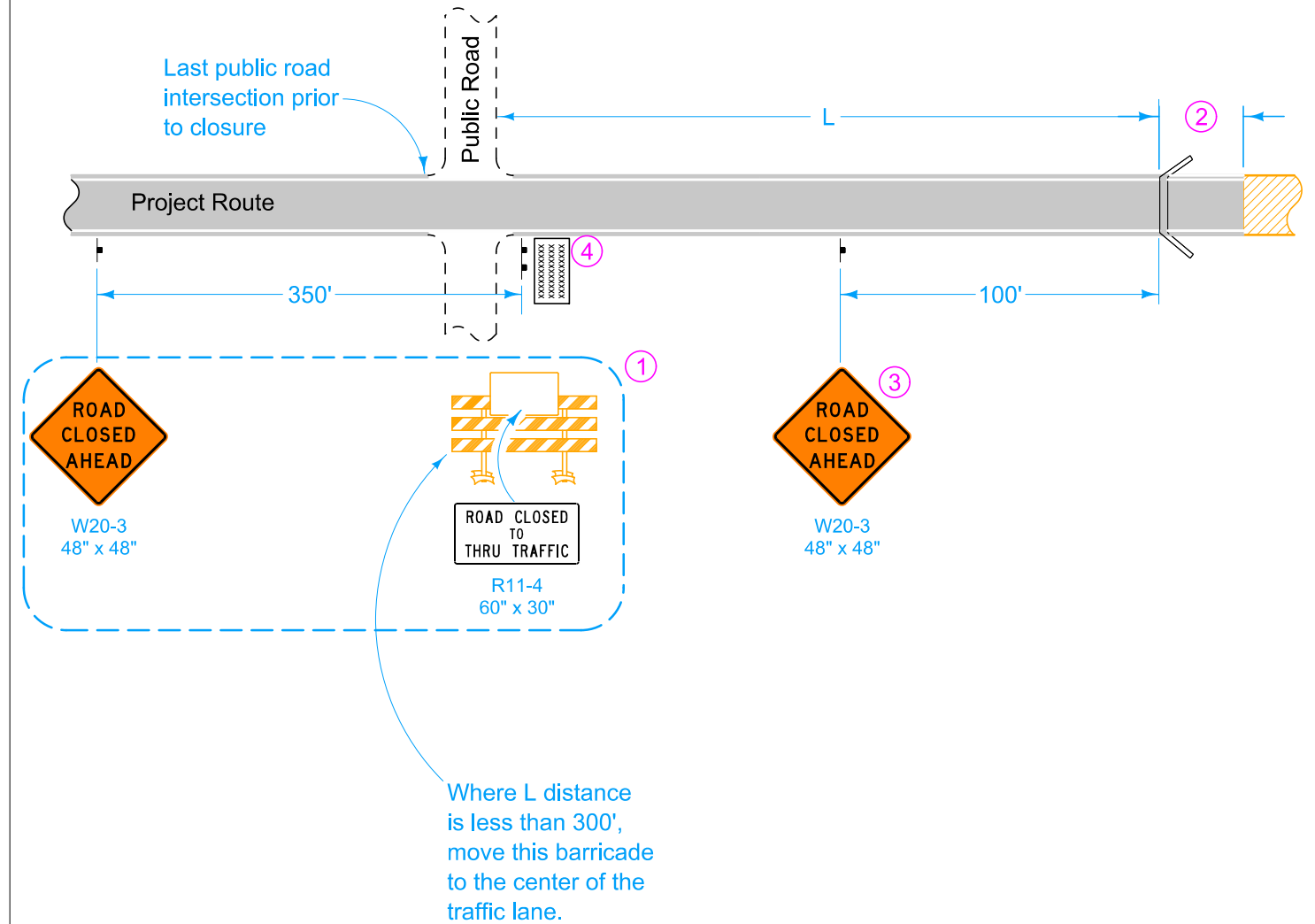
**ROUTES CLOSED TO TRAFFIC**

**SITUATION 1 (RURAL)**  
Project Route Closure



Where L distance is less than 1000', move this barricade to the center of the traffic lane.

**SITUATION 1 (URBAN)**  
Project Route Closure



Where L distance is less than 300', move this barricade to the center of the traffic lane.

LEGEND	
	Traffic Sign
	Type III Barricade
	Portable Dynamic Message Sign
	Work Area
	Road Closure

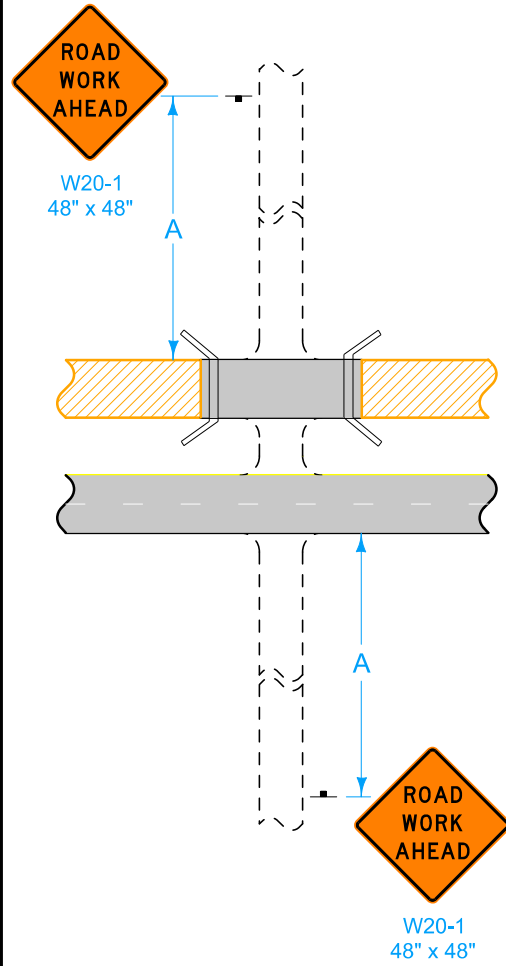
- ① In situation 1, if the intersection is the point of detour these signs and barricade will become the responsibility of the contracting authority and may be modified by the contracting authority to fit detour signing.
- ② When possible, a 100' buffer is desirable.
- ③ When L is less than 300 feet, omit the ROAD CLOSED AHEAD sign.

- ④ Place for 7 calendar days prior to closure. The Engineer will determine the message to display. Remove when road is closed. Use of Portable Dynamic Message Sign is optional on non-primary roadways.

 <b>STANDARD ROAD PLAN</b>	REVISION 6 04-21-20
	<b>TC-252</b>
SHEET 2 of 3	
REVISIONS: Added Portable Dynamic Message Sign and new note 4 on Sheet 2.	
 <small>APPROVED BY DESIGN METHODS ENGINEER</small>	
<b>ROUTES CLOSED TO TRAFFIC</b>	

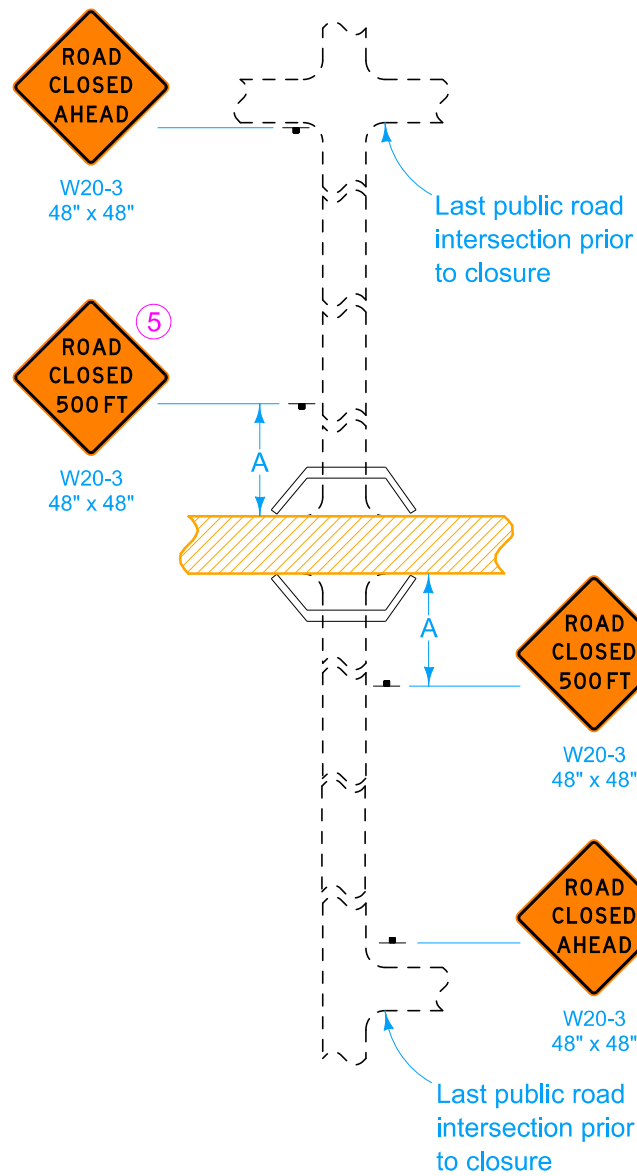
**SITUATION 2**

Public cross-traffic maintained.  
No access to project.



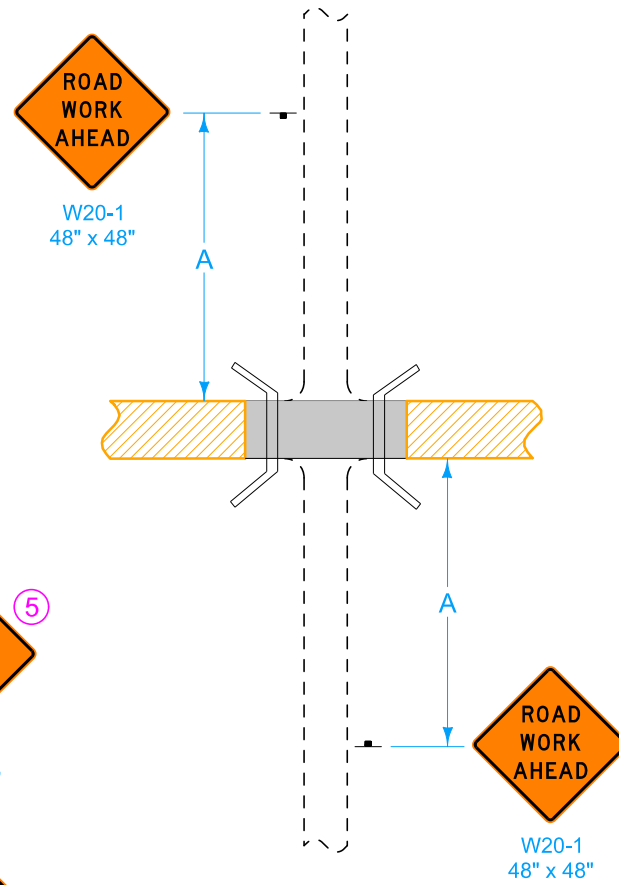
**SITUATION 3**

No access to project  
(Applicable to T-intersections)



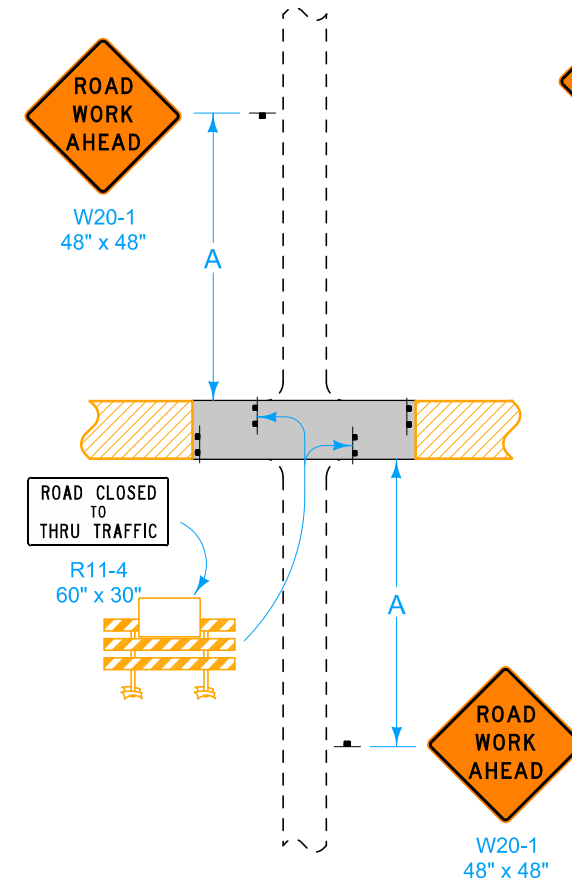
**SITUATION 4**

Public cross-traffic maintained.  
No access to project.



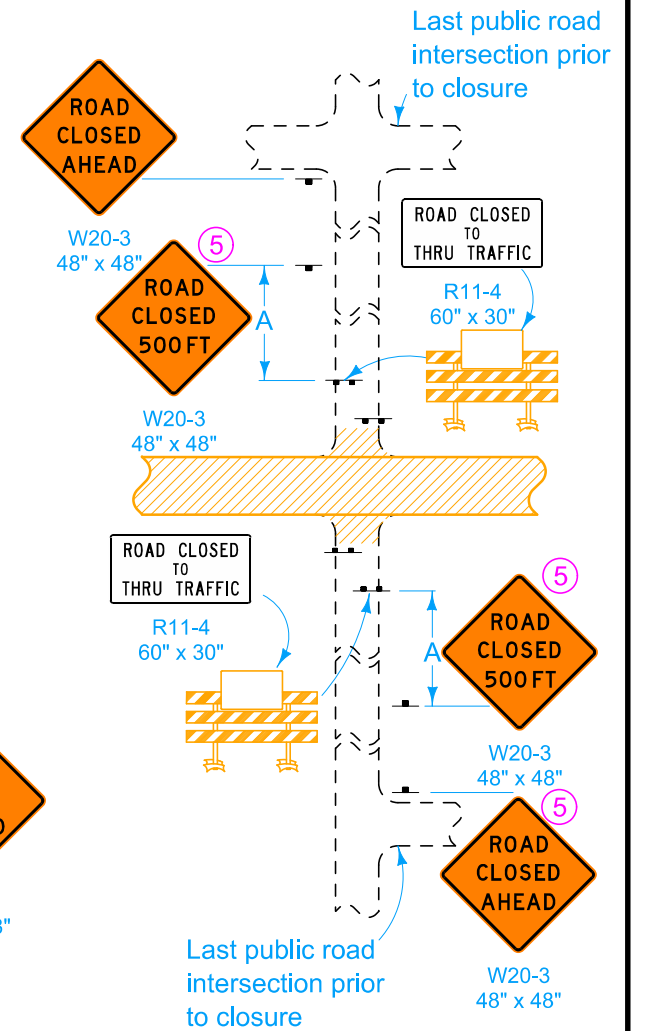
**SITUATION 5**

Public cross-traffic maintained.  
Contractor and resident access.



**SITUATION 6**

No public access. Contractor and resident access only.  
(Applicable to T-intersections)



During suspension of work, (such as over winter):

- Use Situation 2 on two-lane to four-lane projects.
- Situation 5 is preferred where cross-traffic is maintained.

⑤ When the distance between the last public road intersection and the ROAD CLOSED or ROAD CLOSED TO THRU TRAFFIC barricade is less than 1,000 feet, omit the ROAD CLOSED 500 FT sign.

**LEGEND**

- Traffic Sign
- Type III Barricade
- Work Area
- Road Closure

Location	A
Urban	200'
Rural	500'

<b>IOWA DOT</b> <b>STANDARD ROAD PLAN</b>	REVISION
	6   04-21-20
<b>TC-252</b> SHEET 3 of 3	
REVISIONS: Added Portable Dynamic Message Sign and new note 4 on Sheet 2.	
APPROVED BY DESIGN METHODS ENGINEER	
<b>ROUTES CLOSED TO TRAFFIC</b>	