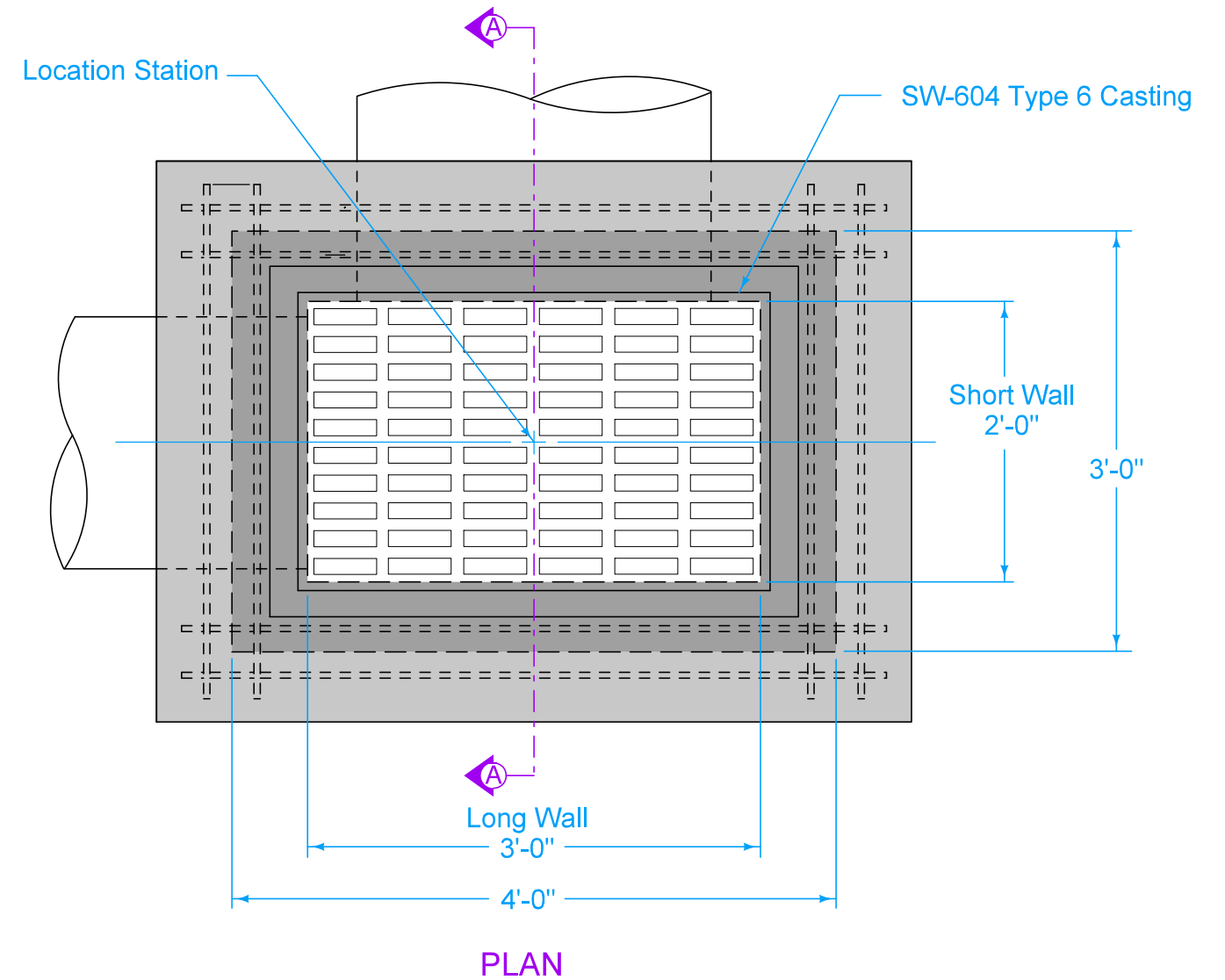


SECTION A-A

MAXIMUM PIPE DIAMETERS		
Pipe Location	Precast Structure	Cast-in-place Structure
Short Wall	15"	18"
Long Wall	24"	30"

- ① Install four #4 diagonal bars at all pipe openings.
- ② Cast-in-place base shown. If base is precast integral with walls, the footprint of the base is not required to extend beyond the outer edge of the walls.
- ③ 12 inch minimum wall height above all pipes.



PLAN

FIGURE 6010.511 SHEET 1 OF 1

SUDAS IOWA DOT	REVISION
	2 04-21-20
FIGURE 6010.511	STANDARD ROAD PLAN
SW-511	
SHEET 1 of 1	
REVISIONS: Added Class I Bedding Material.	
 SUDAS DIRECTOR	 DESIGN METHODS ENGINEER
RECTANGULAR AREA INTAKE	