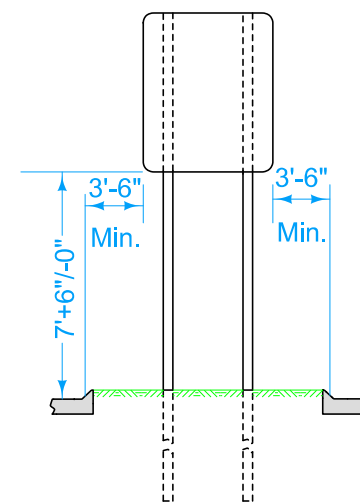
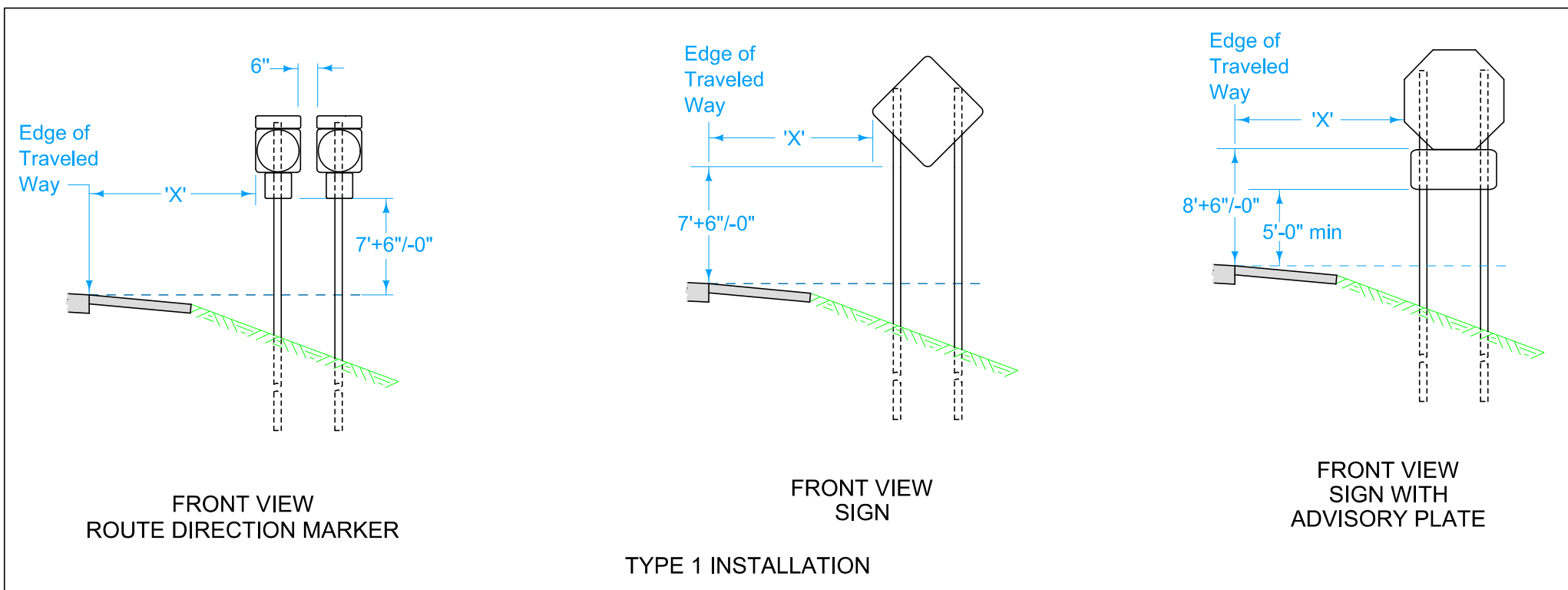


Final sign location will be at the discretion of the Engineer.

Use the Type 1 installation in any case except where:

- (A) Specified otherwise in the plans.
- (B) Directed otherwise by the Engineer.
- (C) A Type 3 installation is required due to location in an island or gore area.



FRONT VIEW  
SIGN LOCATION  
Type 3 Installation

Type 3 installation is intended to show the requirements for a Type 'A' sign when installed in an island or median (where traffic passes on both sides of the sign) as well

installed adjacent to a curbed roadway (sign may be located on either side of a roadway as specified in project plans).

Possible Contract Items:

- Remove and Reinstall Sign as per plan
- Wood Posts for Type A or B signs, 4in x 6in
- Perforated Square Steel tube Post (Anchor Series)
- Type A Signs, Sheet Aluminum
- Install Type A Sign

Possible Tabulations:

- 190-51
- 190-61
- 190-62
- 190-66

 <b>STANDARD ROAD PLAN</b>	REVISION	
	1	04-19-16
	<b>SI-101</b>	
SHEET 1 of 1		

REVISIONS: Changed Lane Edge Line' to 'Edge of Traveled Way'. Replaced 'Y' with numerical value including tolerance. Removed advisory sign from middle view.

*Shawn Miller*  
APPROVED BY DESIGN METHODS ENGINEER

**LOCATIONS-  
TYPE 'A' SIGNS**