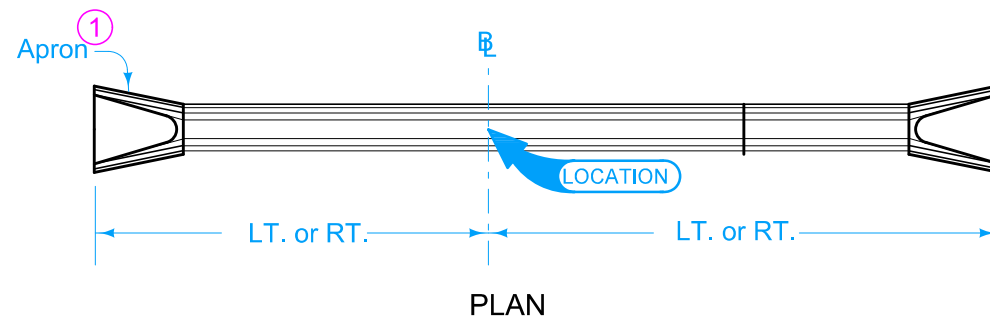
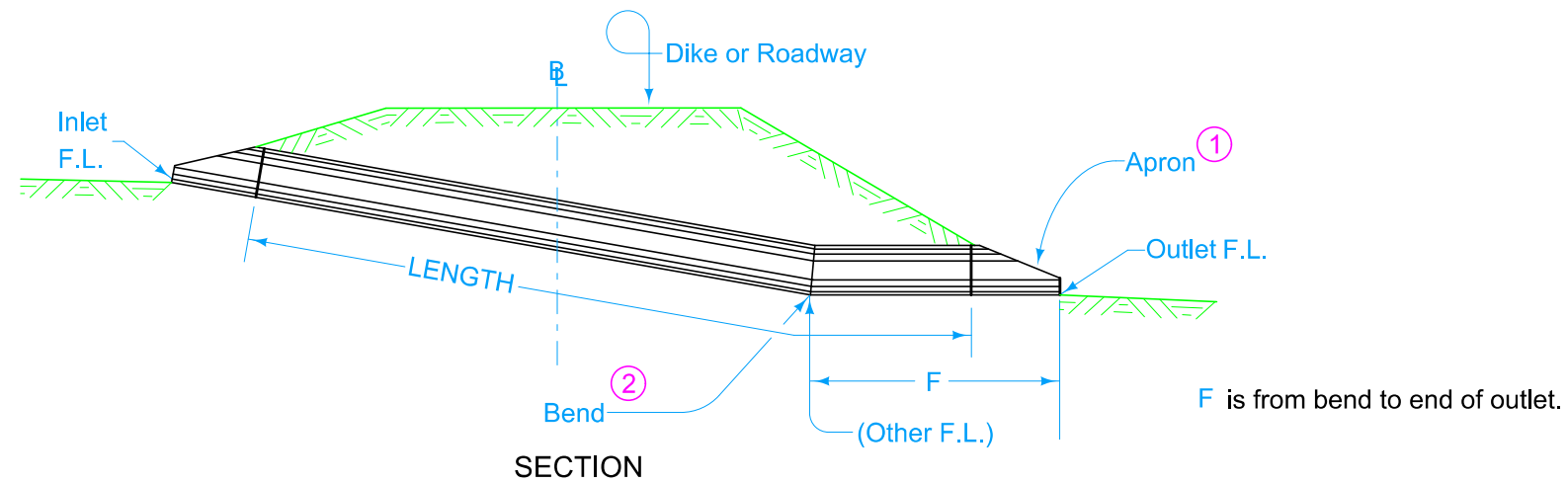

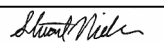


\mathbb{R} is \mathbb{C} of roadway, dike, survey, or other; as detailed on plans.

- ① Refer to the following:
 DR-201 for circular concrete.
 DR-202 for low clearance concrete.
 DR-203 for circular metal.
 DR-205 for circular concrete with end wall.
 DR-206 for low clearance concrete with end wall.
- ② Bend may be accomplished by use of metal elbow, Pipe Adaptor (DR-122), Type "D" Section, or Concrete Elbow (DR-141) as specified.



Possible Tabulation:
104-3

 STANDARD ROAD PLAN	REVISION	
	1	04-18-17
DR-611		SHEET 1 of 1
REVISIONS: Modified note 1 to include references to additional apron types.		
 APPROVED BY DESIGN METHODS ENGINEER		
REINFORCED CONCRETE PIPE CULVERT LETDOWN STRUCTURE		