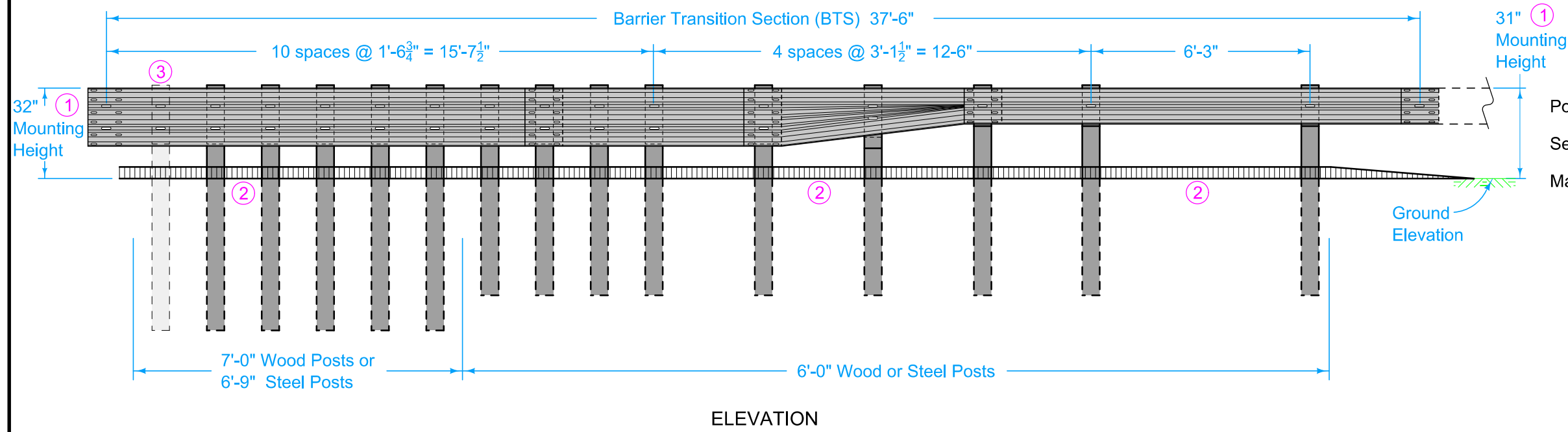
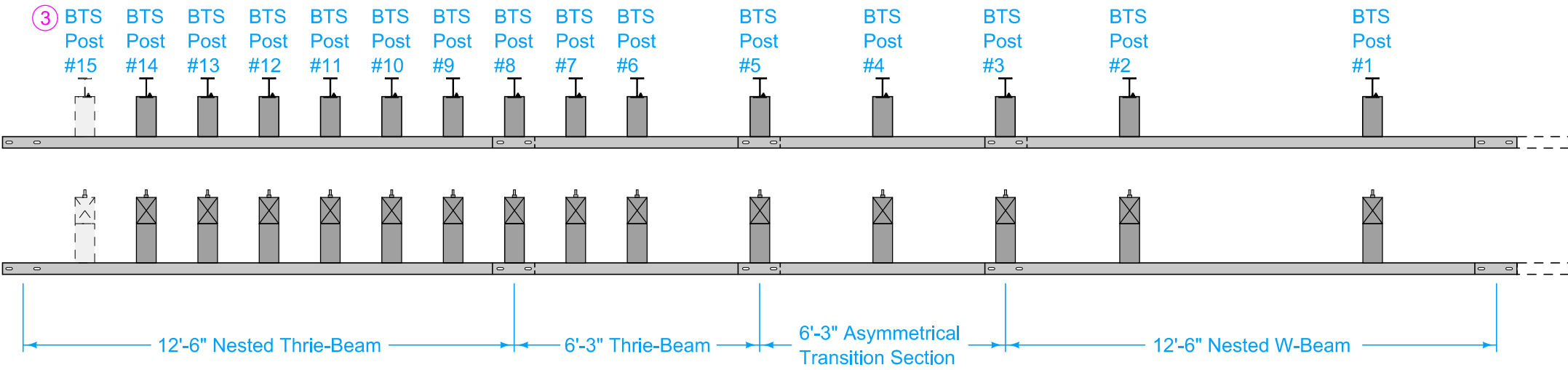


# DESIGNER INFORMATION

At Bridge End Drains, cut Scour Protection (Transition Mat and Turf Reinforcement Mat) or remove rock as required to place post(s) such that Bridge End Drains abut post(s).

- ① Guardrail mounting height at barrier connection is 32 inches. Transition guardrail mounting height down to 31 inches at BTS Post #3.
- ② Possible 4 inch sloped curb. See project plans. Refer to PV-102 for curb and runout details.
- ③ Depending on end anchor type, BTS Post #15 may be eliminated or modified. See BA-202



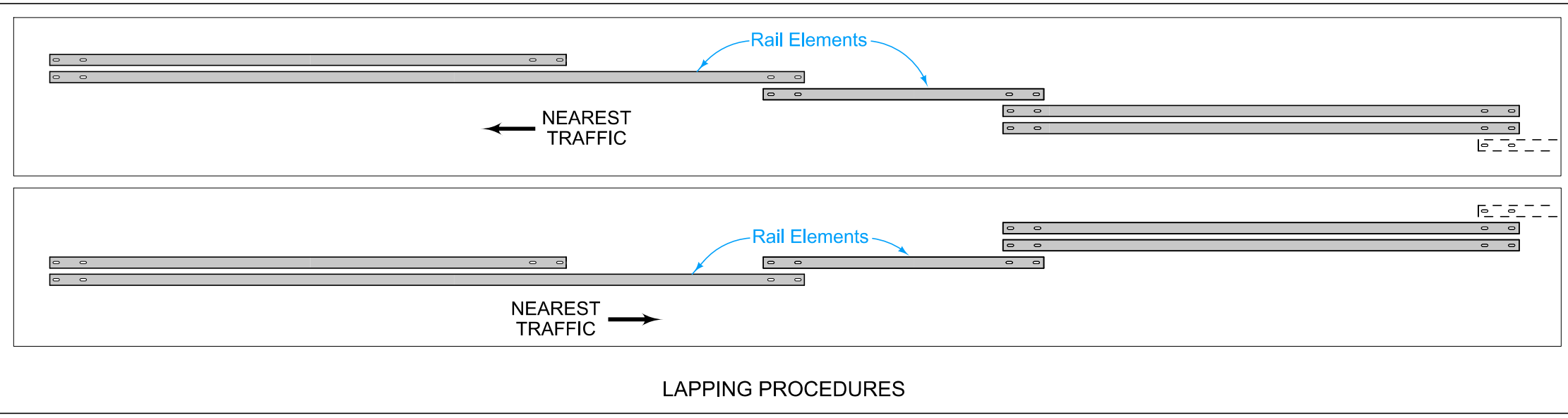
Possible Contract Item:  
Steel Beam Guardrail Barrier Transition Section, BA-201

Materials included in the Contract Item:

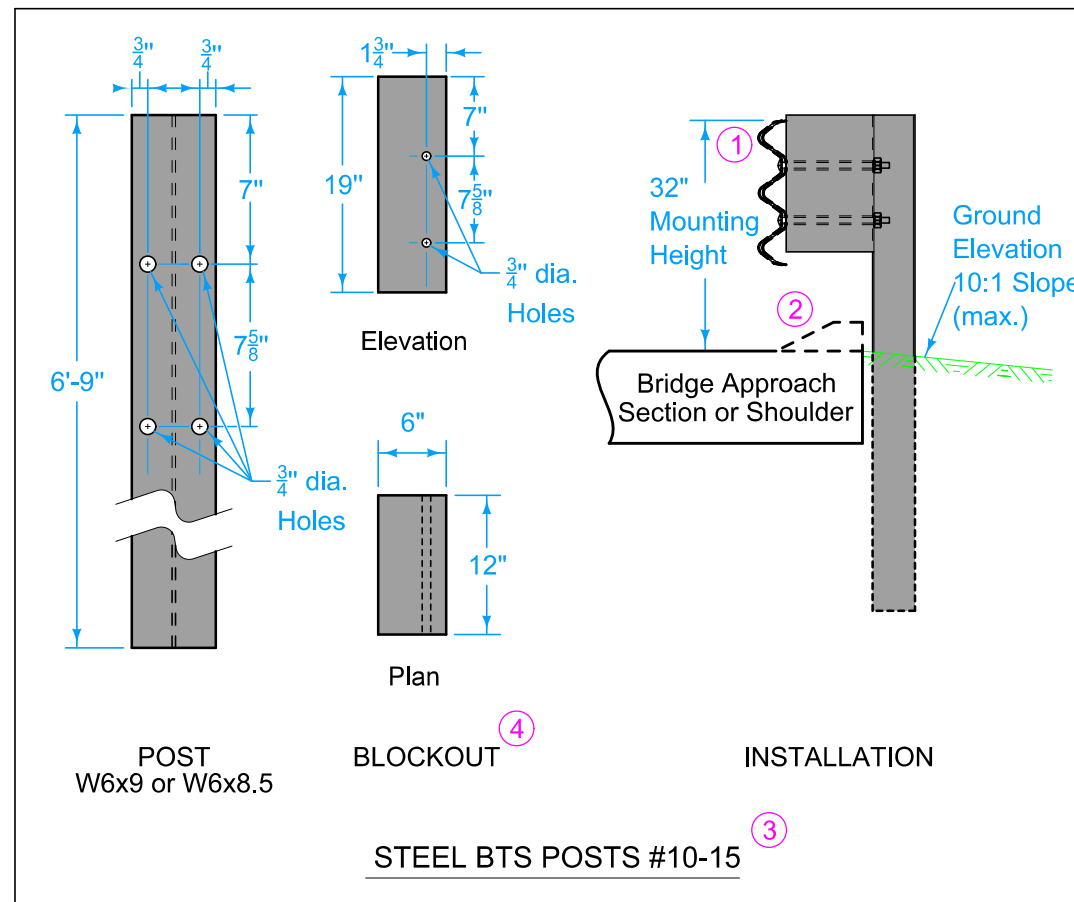
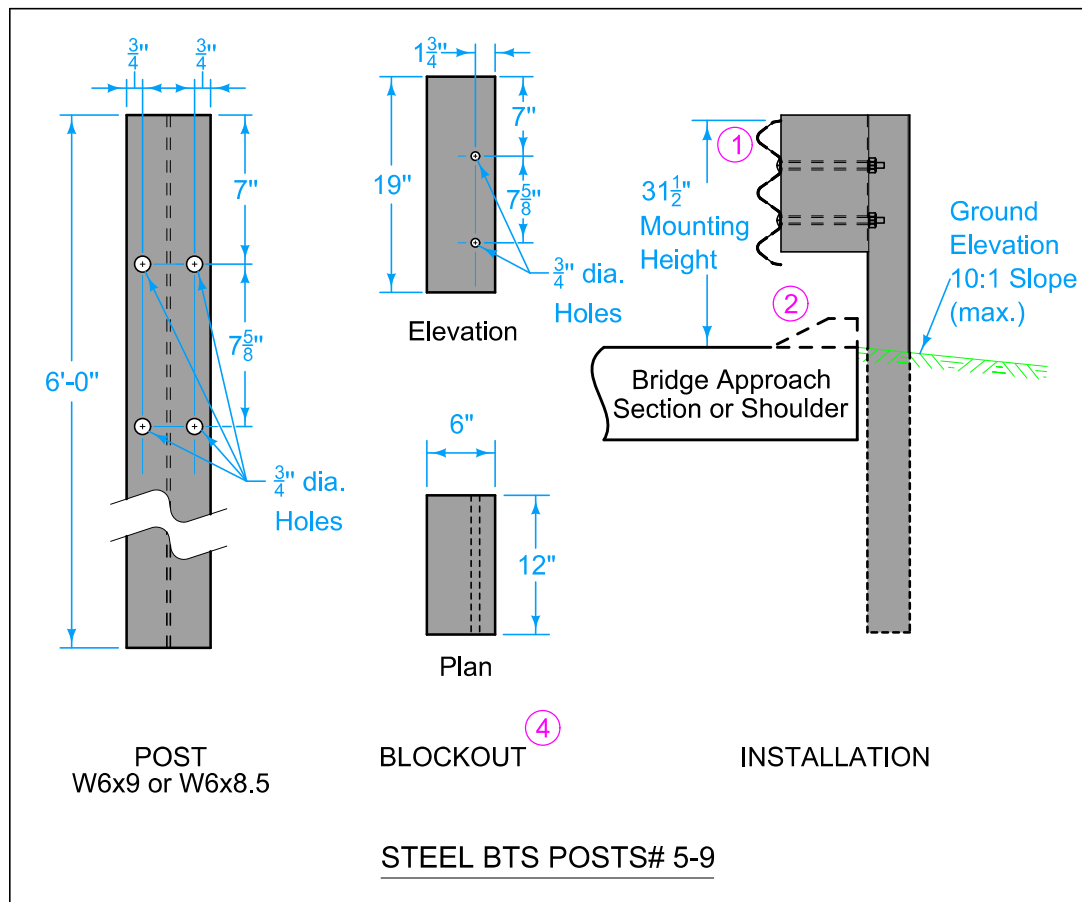
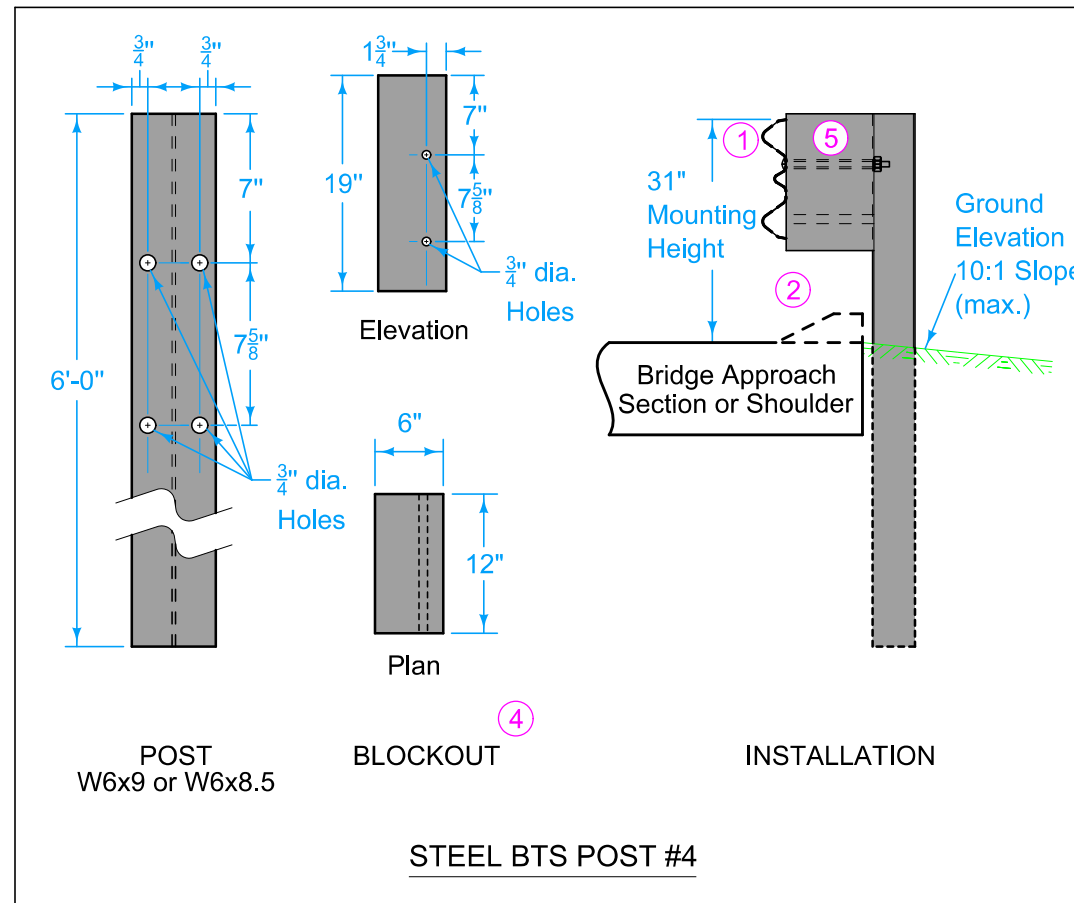
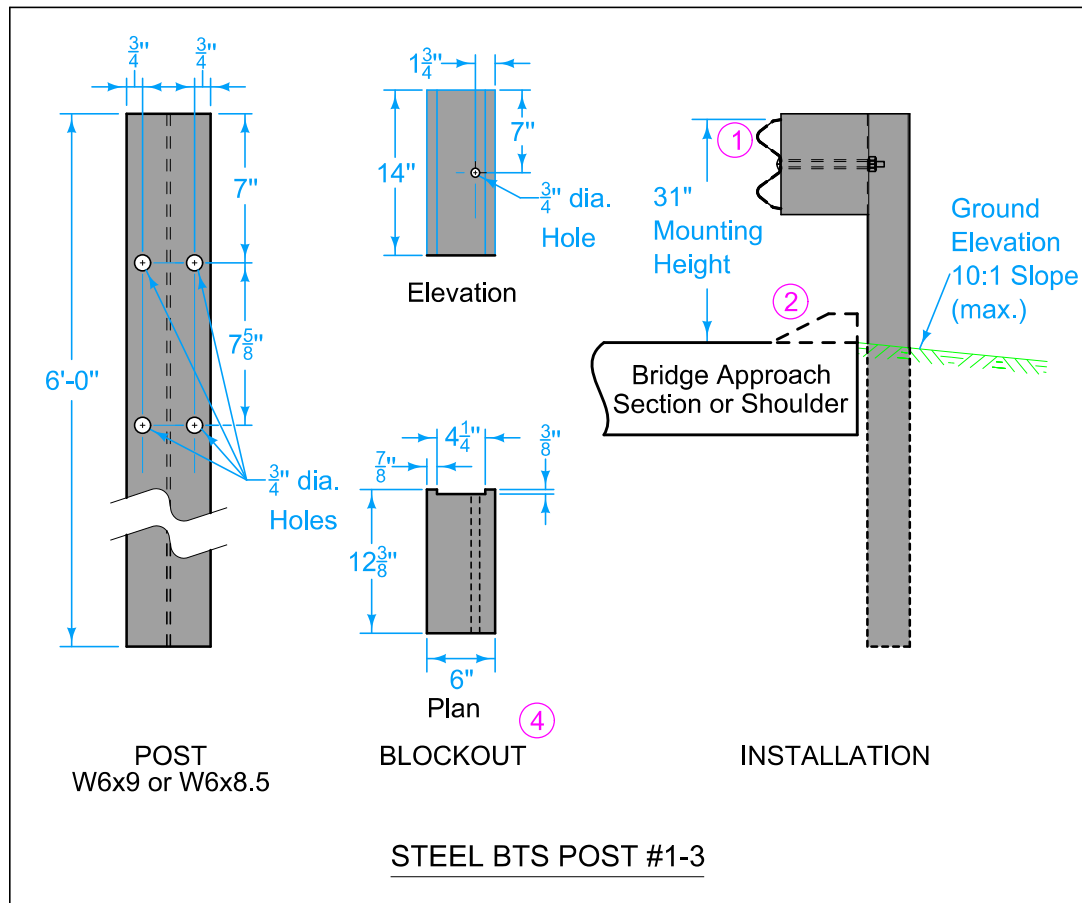
- Steel Post Option:
  - (9) W6x9 x 6'-0" posts
  - (6) 6" x 8" x 6'-9" posts
  - (12) 6" x 12" x 19" blockouts
  - (3) 6" x 12" x 14" blockouts
- Wood Post Option:
  - (9) 6" x 8" x 6'-0" posts
  - (6) 6" x 8" x 7'-0" posts
  - (12) 6" x 12" x 19" blockouts
  - (3) 6" x 12" x 14" blockouts

- (1) Asymmetrical Transition Section
- (2) 12'-6" Thrie-Beam rail sections\*
- (1) 6'-3" Thrie-Beam rail section\*
- (2) 12'-6" W-Beam rail sections
- Approved bolts, nuts, and washers
- Refer to BA-200 for guardrail components

\* One 18'-9" Thrie-Beam rail section may be substituted for one of the 12'-6" sections and the 6'-3" section as shown

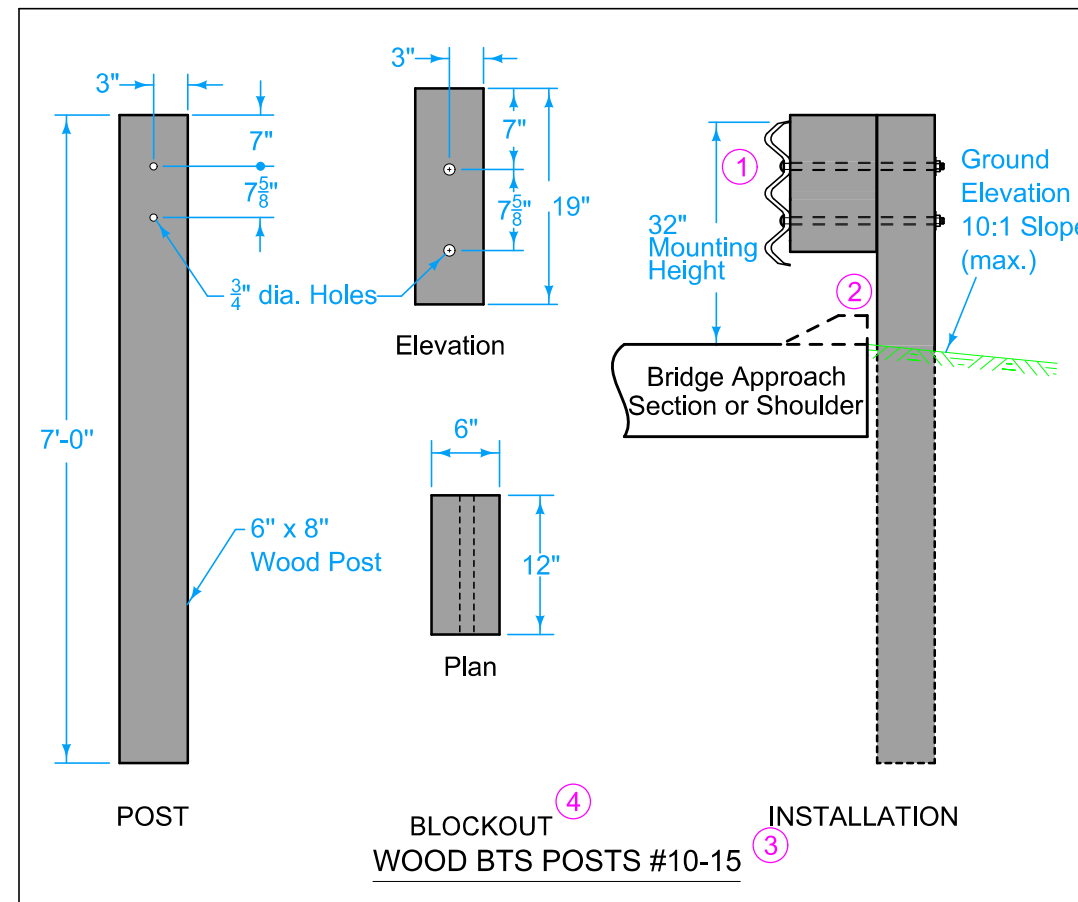
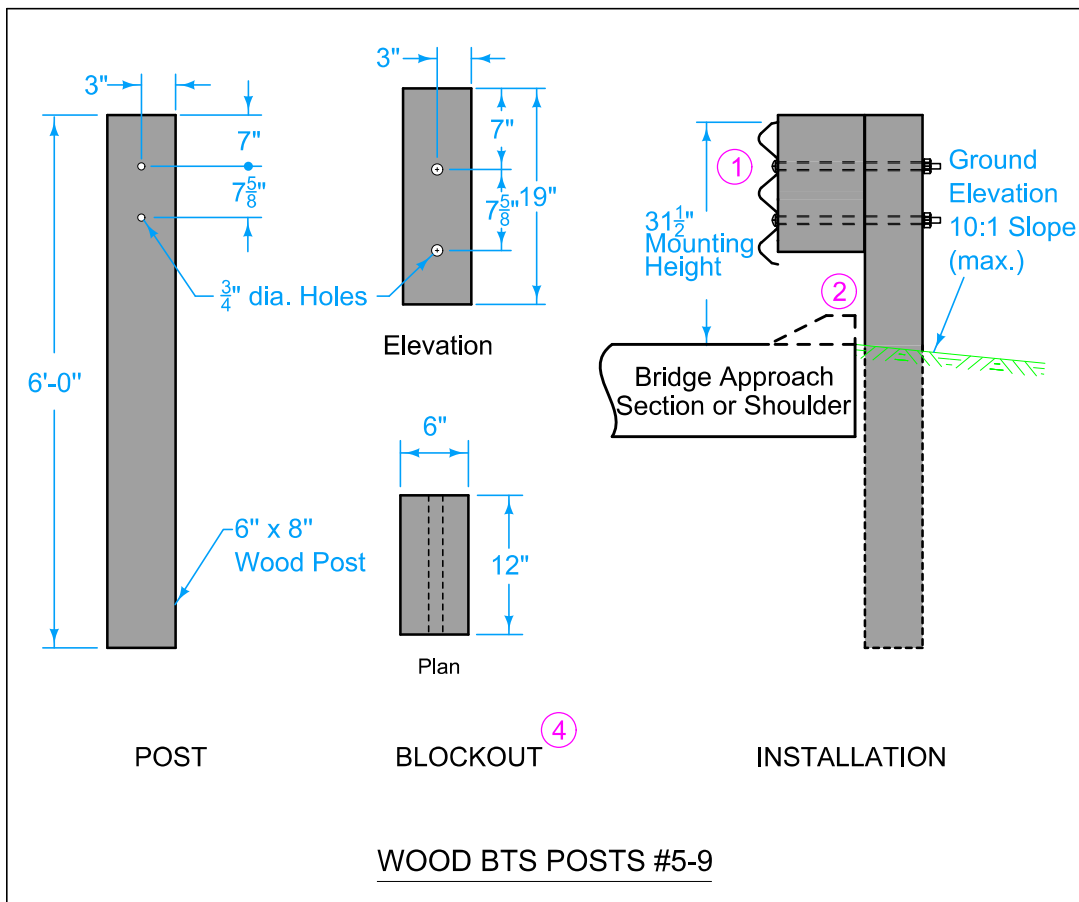
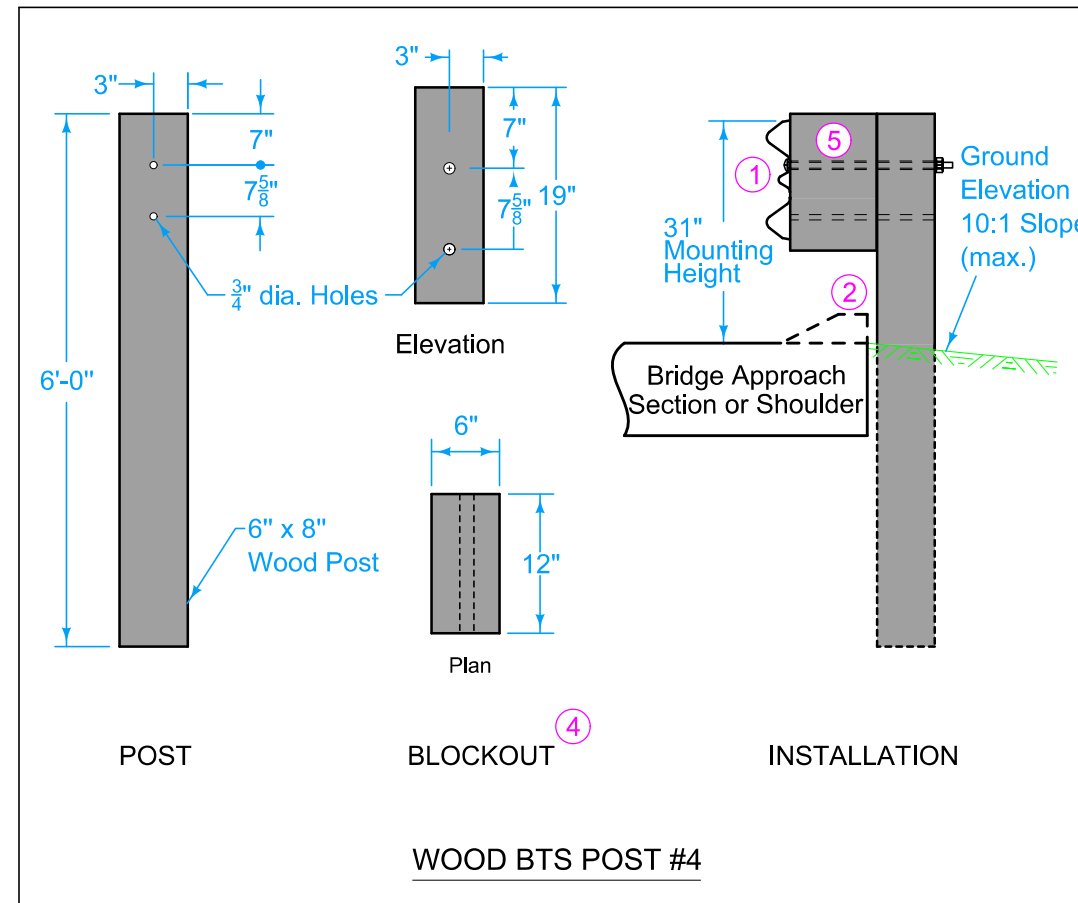
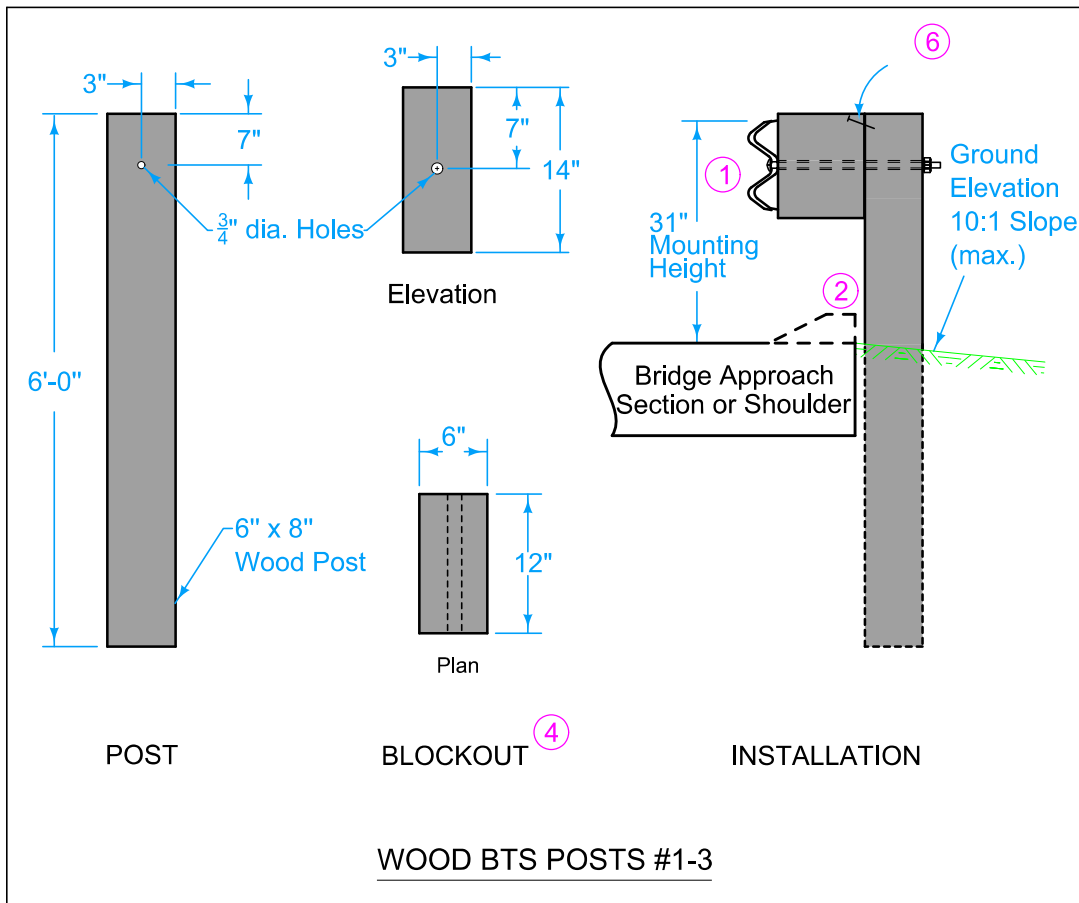


 <b>STANDARD ROAD PLAN</b>	REVISION	
	7	10-18-22
<b>BA-201</b>		SHEET 1 of 3
REVISIONS: Revised curb note.		
 APPROVED BY DESIGN METHODS ENGINEER		
<b>STEEL BEAM GUARDRAIL BARRIER TRANSITION SECTION (MASH TL-3)</b>		



- ① Guardrail mounting height at barrier connection is 32 inches. Transition guardrail mounting height down to 31 inches at BTS Post #3.
- ② Possible 4 inch sloped curb. See project plans. Refer to PV-102 for curb and runout details.
- ③ Depending on end anchor type, BTS Post #15 may be eliminated or modified. See BA-202
- ④ Wood or composite only. Steel blockouts will not be allowed.
- ⑤ Place bolt in top hole only.

	REVISION	
	7	10-18-22
<b>STANDARD ROAD PLAN</b>		<b>BA-201</b>
REVISIONS: Revised curb note.		SHEET 2 of 3
APPROVED BY DESIGN METHODS ENGINEER		
<b>STEEL BEAM GUARDRAIL BARRIER TRANSITION SECTION (MASH TL-3)</b>		



- ① Guardrail mounting height at barrier connection is 32 inches. Transition guardrail mounting height down to 31 inches at BTS Post #3.
- ② Possible 4 inch sloped curb. See project plans. Refer to PV-102 for curb and runout details.
- ③ Depending on end anchor type, BTS Post #15 may be eliminated or modified. See BA-202.
- ④ Wood or composite only. Steel blockouts will not be allowed.
- ⑤ Place bolt in top hole only.
- ⑥ 16d nail to prevent blockout rotation.

	REVISION	
	7	10-18-22
<b>STANDARD ROAD PLAN</b>		<b>BA-201</b>
		SHEET 3 of 3
REVISIONS: Revised curb note.		
APPROVED BY DESIGN METHODS ENGINEER		
<b>STEEL BEAM GUARDRAIL BARRIER TRANSITION SECTION (MASH TL-3)</b>		